



**PARTS
CATALOGUE
CATALOGO
DE REPUESTOS**

AF115F (B281) COLOMBIA



1PB28-261S1

()

AF115F
CATALOGO DE REPUESTOS
©2014 por Yamaha Motor Co., Ltd.
1ª edición, junio 2014
Todos los derechos reservados.
Toda reproducción o uso no autorizado
sin el consentimiento escrito de
Yamaha Motor Co., Ltd.
quedan expresamente prohibidos
Impreso en Japón.

AF115F
PARTS CATALOGUE
©2014 by Yamaha Motor Co., Ltd.
1st edition, June 2014
All rights reserved.
Any reprinting or unauthorized use
without the written permission of
Yamaha Motor Co., Ltd.
is expressly prohibited.
Printed in Japan.

PROLOGO

Este catálogo de repuestos corresponde a las piezas para el o los modelos que figuran en la página de portada. Al formular el pedido de repuestos, se ruega citar este catálogo y especificar correctamente el número y el nombre de las piezas.

1. Las modificaciones y agregados que se hayan realizado después de la edición de este Catálogo de Repuestos, serán anunciados en las Informaciones de Recambios. Es recomendable que se hagan las correcciones necesarias en el Catálogo de Repuestos de acuerdo con las Informaciones de Recambios.

2. Abreviaciones

En este. Catálogo de Repuestos se emplean las siguientes abreviaciones.

“UR” Usar el número de partes especificado

“UN” Usar la cantidad necesaria

“AP” Piezas sustitutivas

“LM” Fabricación local (Hay que pedir los repuestos en las cercanías)

“F#” N° de bastidor (N° aplicable a la máquina)

“O/S” Sobredimensionado

3. La cantidad de componentes para el montaje

- Los componentes, suministrados como conjunto, se describen con un punto (.) que precede al nombre del parte como se indica a continuación.
- La numeración que aparece a la derecha de cada descripción indica la cantidad de partes por cada unidad de conjunto.

CODIGO N°	DESCRIPCION	CANT.	OBSERVACIONES
2F5-83310-60	ENSAMBLAJE DE LA LUZ	2	
115-83311-60	.BOMBILLA (6V-18W)	1	

4. Los colores de los componentes se indican como sigue en la columna de “OBSERVACIONES”.

CODIGO N°	DESCRIPCION	CANT.	OBSERVACIONES
2N4-24110-00-X5	COMP. DEL TANQUE	2	MXR
3J1-24240-10	.GRAFICO, DEL TANQUE	1	PARA MXR

5. Debe tenerse en cuenta que las ilustraciones sirven como guía para la búsqueda de los números de partes y no deben usarse para el montaje. Durante el montaje, se recomienda usar el manual de taller correspondiente.

6. EL asterisco (*) antes del número de referencia indica los elementos modificados después de la primera edición.

FOREWORD

This Parts Catalogue is related to the parts for the model(s) on the cover page. When you are ordering replacement parts, please refer to this Parts Catalogue and quote both part numbers and part names correctly.

1. Modifications or additions which have been made after the issue of the Parts Catalogue will be announced in the Parts News.

It is advisable that you make the necessary corrections to the Parts Catalogue according to the Parts News.

2. Abbreviations

The following abbreviations are used in this Parts Catalogue.

“UR” Use specified parts number.

“UN” Use as many as needed.

“AP” Alternate Parts

“LM” Locally Made (Parts need to be ordered locally)

“F#” Frame No. (Applicable machine No.)

“O/S” Over Size

3. The number of components for assembly

- Parts, which are to be supplied in an assembly, are listed with a dot (.) in front of the part name as shown below.
- The numeral appearing to the right of each component part indicates the quantity of parts for each assembly unit.

PART NO.	DESCRIPTION	Q'TY	REMARKS
2F5-83310-60	FRONT FLASHER LIGHT ASSY	2	
115-83311-60	.BULB (6V-18W)	1	

4. Applicable colours of graphics are represented in the “REMARKS” as shown below.

PART NO.	DESCRIPTION	Q'TY	REMARKS
2N4-24110-00-X5	FUEL TANK COMP.	2	MXR
3J1-24240-10	.GRAPHIC, FUEL TANK	1	FOR MXR

5. Note that the illustrations for reference in finding parts numbers are not to be used for assembling. When assembling, please use the applicable service manual.

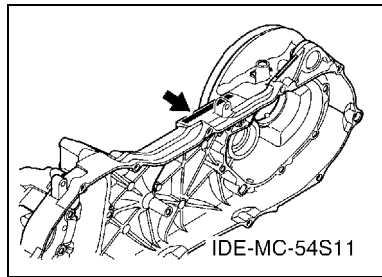
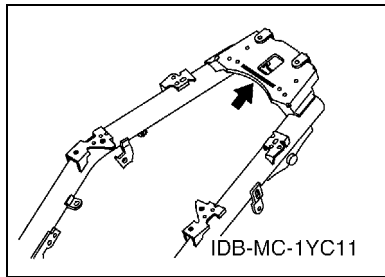
6. The asterisk (*) before a reference number indicates modified items after the first edition.

PROLOGO

7. Números de serie

Nº de Serie del bastidor

Nº de Serie del motor



8. Códigos de color aplicables (El símbolo (*) muestra el color de modelo.)

Abreviatura	Nombre de color	Código de color
CIS	CIRCUIT SILVER	00WN
DRMK(*)	DEEP RED METALLIC K	0918
LYNM9	LIGHT YELLOWISH GRAY ME 9	0752
MDRM3	MAT DEEP RED METALLIC 3	1258
MDS	MIDNIGHT SILVER	007M
SL	SILVER	0035
SM1	SILVER METALLIC 1	0660
VDOM1(*)	VERY DARK ORANGE METALLIC 1	0858
WM6(*)	BLANCO METALICO 6	1124
WM6(*)	WHITE METALLIC 6	1124

9. Nº de serie inicial aplicable

Nº de Serie del bastidor

Nº de serie	Nombre de la columna de cantidades	Código de Modelo

Nº de Serie del motor

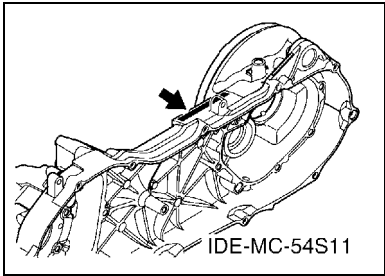
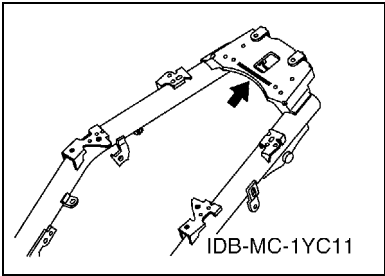
Nº de serie	Nombre de la columna de cantidades	Código de Modelo

FOREWORD

7. Applicable Serial No.

Frame Serial No.

Engine Serial No.



8. Applicable Colour Code (The (*) mark shows Model colour.)

Abbreviation	Colour Name	Colour Code
CIS	CIRCUIT SILVER	00WN
DRMK(*)	DEEP RED METALLIC K	0918
LYNM9	LIGHT YELLOWISH GRAY ME 9	0752
MDRM3	MAT DEEP RED METALLIC 3	1258
MDS	MIDNIGHT SILVER	007M
SL	SILVER	0035
SM1	SILVER METALLIC 1	0660
VDOM1(*)	VERY DARK ORANGE METALLIC 1	0858
WM6(*)	BLANCO METALICO 6	1124
WM6(*)	WHITE METALLIC 6	1124

9. Applicable Starting Serial No.

Frame Serial No.

Serial No.	Name Of Q'ty Column	Model Code

Engine Serial No.

Serial No.	Name Of Q'ty Column	Model Code

CONTENIDO

MOTOR

CILINDRO	1
CIGUENAL & PISTON	2
VALVULA	3
ARBOL DE LEVAS & CADENA	4
BOMBA DE ACEITE	5
CUBIERTA DE AIRE & VENTILADOR	6
ADMISION	7
DESCARGA	9
CARTER	10
CUBIERTA DE CARTER 1	12
ARRANQUE	13
EMBRAGUE	14
TRANSMISION	16

SHASIS

CUADRO	17
GUARDABARRO	18
CUBIERTA LATERAL	19
BRAZO TRASERO & SUSPENSION	21
DIRECCION	22
DEPOSITO DE COMBUSTIBLE	24
ASIENTO	25
FRONT WHEEL FOR SPOKE WHEEL	27
CALIBRE FRENO DELANTERA	28
REAR WHEEL FOR SPOKE WHEEL	29
MANILLAR & CABLE	30
CILINDRO MAESTRO DELANTERO	32
SOPORTE & APOYAPIE	33
PATA PROTEGIDA	35
GENERADOR	37
MOTOR DE ARRANQUE	38
LUZ DE DESTELLADOR	39
MEDIDOR	40
FARO DELANTERO	42
LUZ DE COLA	43
INTERRUPTOR DE MANILLAR&PALANC	44
EQUIPO ELECTRICO 1	45
EQUIPO ELECTRICO 2	47

INDICE

INDICE NUMERICO	48
-----------------------	----

CONTENTS

ENGINE

CYLINDER	1
CRANKSHAFT & PISTON	2
VALVE	3
CAMSHAFT & CHAIN	4
OIL PUMP	5
AIR SHROUD & FAN	6
INTAKE	7
EXHAUST	9
CRANKCASE	10
CRANKCASE COVER 1	12
STARTER	13
CLUTCH	14
TRANSMISSION	16

CHASSIS

FRAME	17
FENDER	18
SIDE COVER	19
REAR ARM & SUSPENSION	21
STEERING	22
FUEL TANK	24
SEAT	25
FRONT WHEEL FOR SPOKE WHEEL	27
FRONT BRAKE CALIPER	28
REAR WHEEL FOR SPOKE WHEEL	29
STEERING HANDLE & CABLE	30
FRONT MASTER CYLINDER	32
STAND & FOOTREST	33
LEG SHIELD	35
GENERATOR	37
STARTING MOTOR	38
FLASHER LIGHT	39
METER	40
HEADLIGHT	42
TAILLIGHT	43
SWITCH & LEVER FOR DISK BRAKE	44
ELECTRICAL 1	45
ELECTRICAL 2	47

INDEX

NUMERICAL INDEX	48
-----------------------	----

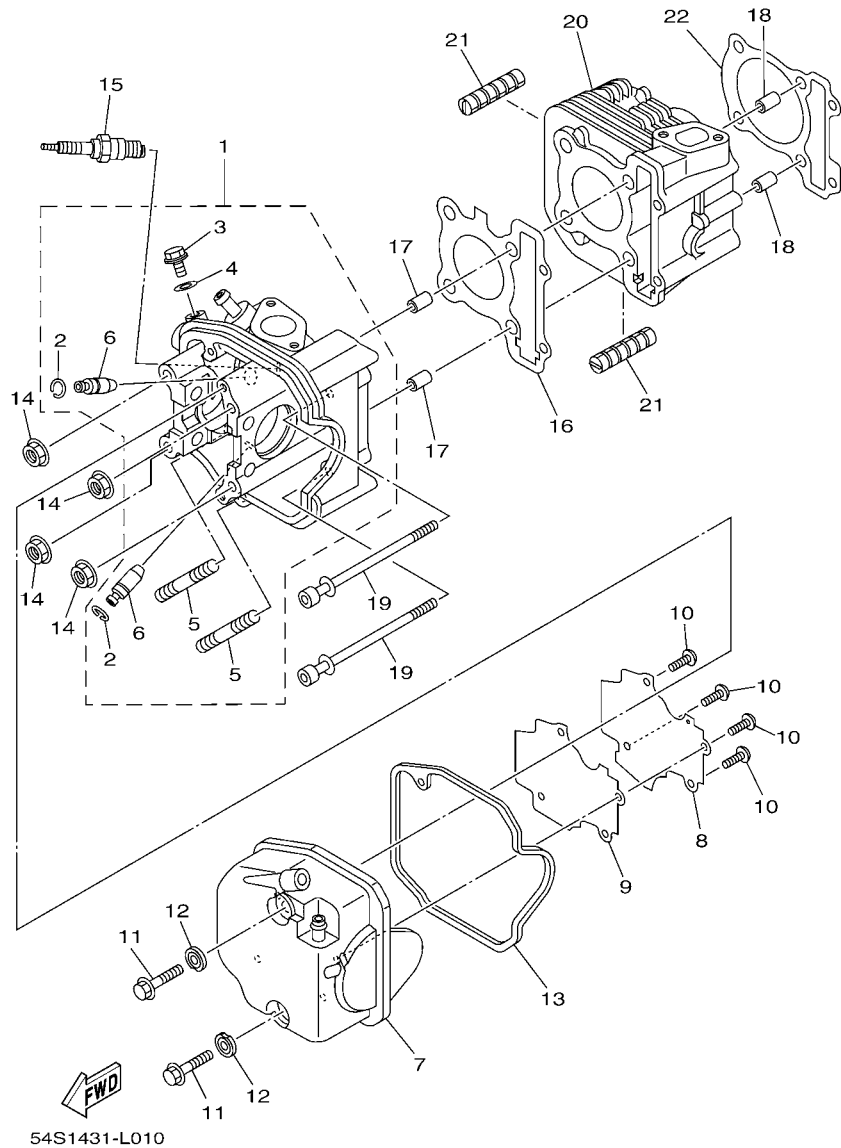


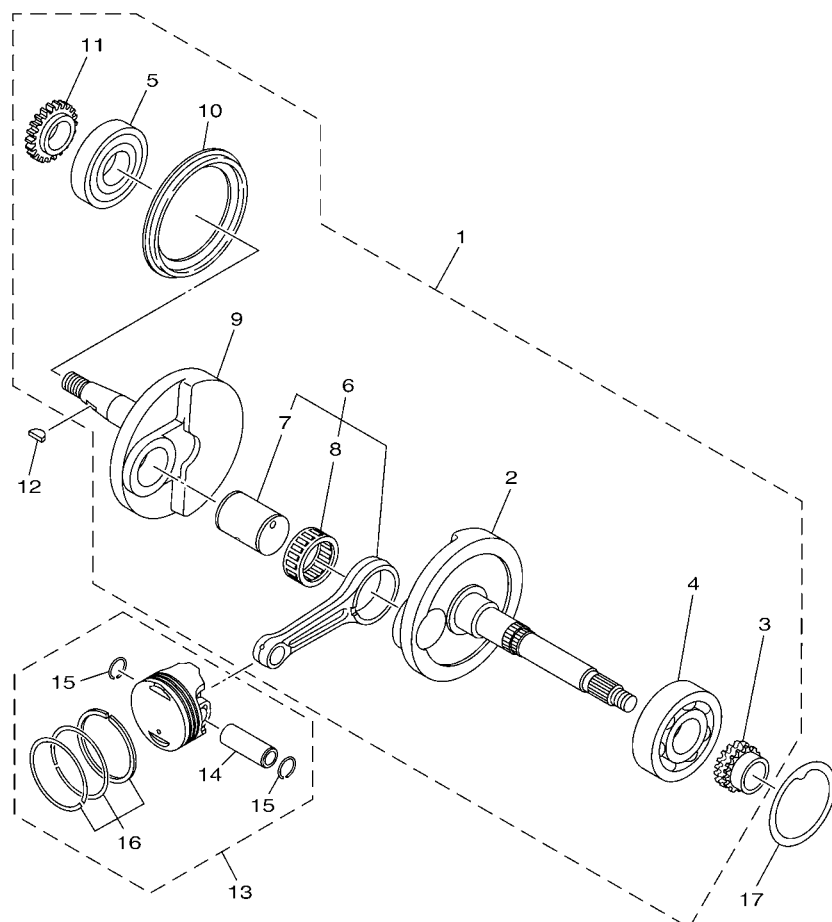
FIG. 1 CILINDRO

CYLINDER

REF. N°	CODIGO N° PART NO.	DESCRIPCION DESCRIPTION	B281				OBSERVACIONES REMARKS
1	54S-WE110-00	CULATA DE CILINDRO COMPLETA CYLINDER HEAD ASSY	1				
2	93440-10085	.PRESILLA REDONDA .CIRCLIP	2				
3	95022-06010	.PERNO, DE BRIDA .BOLT, FLANGE	1				
4	90430-06817	.JUNTA .GASKET	1				
5	95612-08618	.PERNO DE PUNTAL .BOLT, STUD	2				
6	54S-E1133-10	.GUIA DE VALVULA 1 .GUIDE, VALVE 1	2				
7	54S-E1191-00	TAPA CULATA DE CILINDRO 1 COVER, CYLINDER HEAD 1	1				
8	54S-E1165-00	PLACA RESPIRADERO PLATE, BREATHER	1				
9	54S-E1169-00	EMPAQ. CBTA. DE RESP. GASKET, BREATHER COVER	1				
10	90149-05801	TORNILLO DE REGLAJE SCREW	4				
11	95812-06030	TORNILLO DE REBORDE BOLT, FLANGE	2				
12	54S-E1173-00	ARANDELA SELLO WASHER, SEALING	2				
13	1YC-E1193-00	EMPAQUE GASKET, HEAD COVER 1	1				
14	90179-08518	TUERCA NUT	4				
15	94700-00372	BUJIA (NGK CR6HSA) PLUG, SPARK (NGK CR6HSA)	1				
16	1YC-E1181-00	JUNTA, DE CULATA 1 GASKET, CYLINDER HEAD 1	1				
17	99530-10114	PASADOR, DE ESPIGA PIN, DOWEL	2				
18	99530-10114	PASADOR, DE ESPIGA PIN, DOWEL	2				
19	90110-06868	TORNILLO ALLEN BOLT, HEXAGON SOCKET HEAD	2				
20	54S-E1311-00	CILINDRO 1 CYLINDER 1	1				
21	54S-E1162-00	AMORTIGUADOR 2 ABSORBER 2	2				
22	1YC-E1351-00	JUNTA, DE CILINDRO GASKET, CYLINDER	1				

FIG. 2 CIGUENAL & PISTON

CRANKSHAFT & PISTON




54S1431-L021

REF. Nº	CODIGO Nº PART NO.	DESCRIPCION DESCRIPTION	B281				OBSERVACIONES REMARKS
1	1YC-E1400-01	CIGUENAL COMPLETO CRANKSHAFT ASSY	1				
2	54S-E1412-00	.MANIVELA 1 .CRANK 1	1				
3	52B-E1549-00	.CATALINA CADENA DE LEVA .SPROCKET, CAM CHAIN	1				
4	93306-305YU	.COJINETE .BEARING	1				
5	93306-372Y5	.COJINETE .BEARING	1				
6	1YC-E1650-00	.BIELA COMPLETA .CONNECTING ROD ASSY	1				
7	54S-E1681-00	..PASADOR MANIVELA 1 ..PIN, CRANK 1	1				
8	93310-528YG	..COJINETE DE RODILLOS ..BEARING	1				
9	54S-E1422-00	.MANIVELA 2 .CRANK 2	1				
10	5VD-E3452-00	.CUBIERTA FILTRO ROTOR .COVER, ROTOR FILTER	1				
11	4D0-E3324-00	.ENGRANAJE TRACC. DE BOMBA .GEAR, PUMP DRIVE	1				
12	90280-03017	CUNA WOODRUFF KEY, WOODRUFF	1				
13	54P-E1630-00	PISTON COMPLETO (NORMA) PISTON ASSY (STD)	1				
14	54S-E1633-00	.PASADOR, PISTON .PIN, PISTON	1				
15	93450-14088	.SEGURO .CIRCLIP	2				
16	54P-E1603-00	.JUÉGO DE ANILLOS (NORMA) .PISTON RING SET (STD)	1				
17	54S-E1445-00	ESPACIADOR SPACER	1				

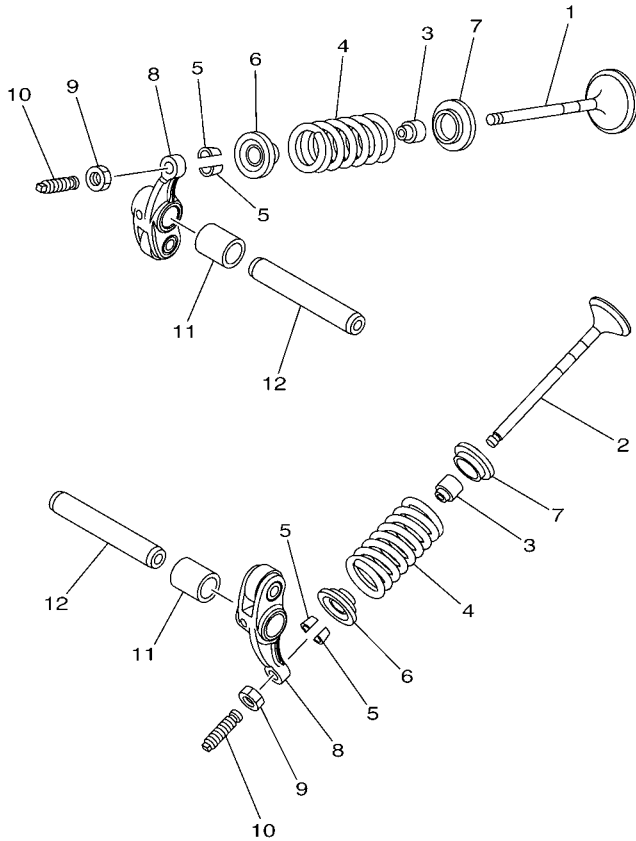


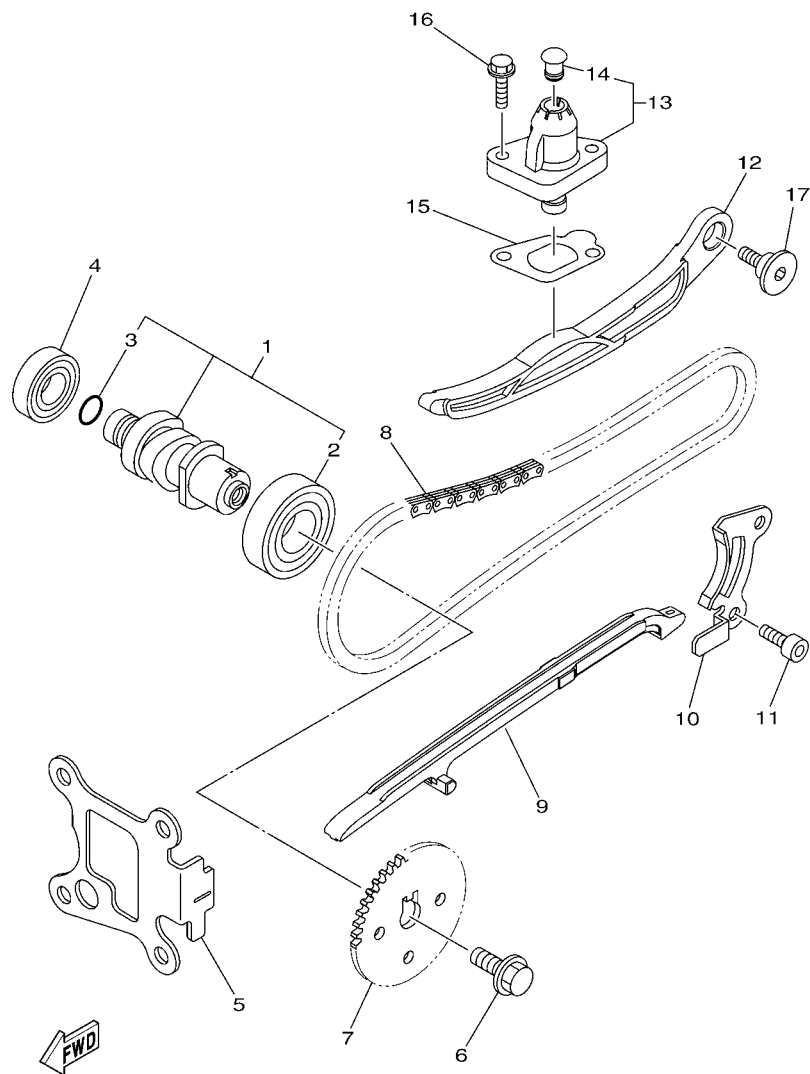
FIG. 3 VALVULA

VALVE

REF. Nº	CODIGO Nº PART NO.	DESCRIPCION DESCRIPTION	B281				OBSERVACIONES REMARKS
1	54S-E2111-00	VALVULA DE ADMISION VALVE, INTAKE	1				
2	54S-E2121-00	VALVULA DE ESCAPE VALVE, EXHAUST	1				
3	54S-E2119-00	SELLO DE ACEITE VALVULA SEAL, VALVE STEM	2				
4	54P-E2113-00	RESORTE VALVULA INTERNA SPRING, VALVE INNER	2				UR UR
	1GC-E2113-00	RESORTE VALVULA INTERNA SPRING, VALVE INNER	2				UR UR
5	1AA-12118-00	SEGURO DE VALVULA LOCK, VALVE SPRING RETAINER	4				
6	54S-E2117-00	RETEN RESORTE DE VALVULA RETAINER, VALVE SPRING	2				UR UR
	1GC-E2117-00	RETEN RESORTE DE VALVULA RETAINER, VALVE SPRING	2				UR UR
7	5P0-E2126-00	ASIENTO RESORTE DE VALVULA2 SEAT, VALVE SPRING 2	2				
8	54P-E2151-00	BRAZO DE BALANCIN DE VALVULA ARM, VALVE ROCKER	2				
9	90170-05803	TUERCA NUT	2				
10	33S-E2159-01	TORNILLO DE AJUSTE DE VALVULA SCREW, VALVE ADJUSTING	2				
11	5P0-E2662-00	COLLAR 1	2				UR UR
	1GC-E2662-00	COLLAR 1	2				UR UR
12	54S-E2146-00	ARBOL DE BALANCIN SHAFT, ROCKER	2				UR UR
	1GC-E2146-00	ARBOL DE BALANCIN SHAFT, ROCKER	2				UR UR



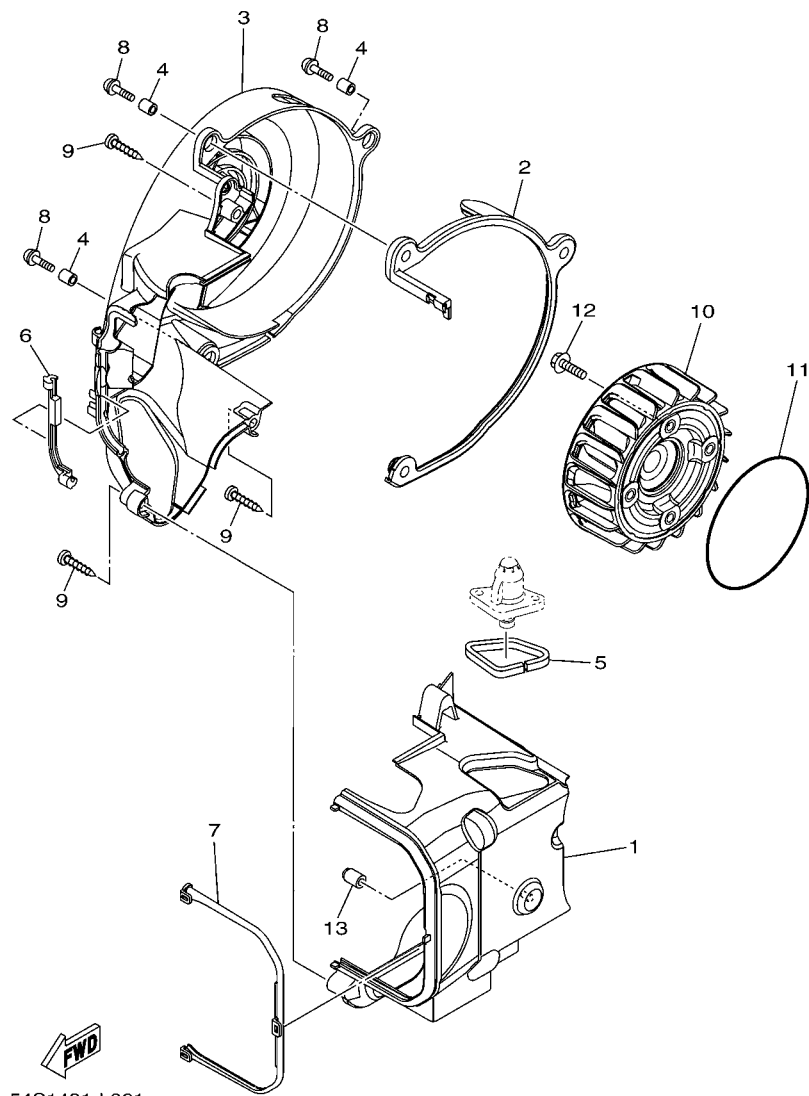
54S1431-L030



54S1431-L040

FIG. 4 ARBOL DE LEVAS & CADENA CAMSHAFT & CHAIN

REF. N°	CODIGO N° PART NO.	DESCRIPCION DESCRIPTION	B281				OBSERVACIONES REMARKS
1	54S-E2170-00	ARBOL DE LEVAS COMPLETO 1 CAMSHAFT ASSY 1	1				
2	93306-054YM	.COJINETE .BEARING	1				
3	93210-10805	.ANILLO O .O-RING	1				
4	93306-002YW	COJINETE BEARING	1				UR
	93306-002YE	COJINETE BEARING	1				UR
5	54S-E111F-00	PLACA PLATE	1				
6	90105-088E1	TORNILLO BOLT, FLANGE	1				
7	33S-E2176-00	CATALINA DE CADENA SPROCKET, CAM CHAIN	1				
8	94568-A6090	CADENA CHAIN	1				
9	1YC-E2231-00	TOPE DE GUIA 1 GUIDE, STOPPER 1	1				
10	33S-E2233-00	PLACA DE TOPE DE GUIA 1 PLATE, GUIDE STOPPER 1	1				
11	91312-06012	TORNILLO BOLT	2				
12	1YC-E2241-00	TOPE DE GUIA 2 GUIDE, STOPPER 2	1				
13	5MX-E2210-00	TENSOR CADENA DE LEVA TENSIONER ASSY, CAM CHAIN	1				
14	5MX-E2222-00	.TAPON .PLUG	1				
15	1YC-E2213-00	EMPAQUE DE CAJA TENSOR GASKET, TENSIONER CASE	1				
16	95022-06020	PERNO, DE BRIDA BOLT, FLANGE	2				
17	52B-E2228-00	PERNO BOLT	1				



54S1431-L061

FIG. 6 CUBIERTA DE AIRE & VENTILADOR AIR SHROUD & FAN

REF. Nº	CODIGO Nº PART NO.	DESCRIPCION DESCRIPTION	E281				OBSERVACIONES REMARKS
1	54S-E2651-00	CUBIERTA DE PASO DE AIRE 1 AIR SHROUD, CYLINDER 1	1				
2	54S-E2658-00	AMORTIGUADOR DE CUBIERTA 1 DAMPER, AIR SHROUD 1	1				
3	54S-E2652-00	CUBIERTA DE PASO DE AIRE 2 AIR SHROUD, CYLINDER 2	1				
4	90387-067V1	ESPACIADOR COLLAR	3				
5	90520-05810	EQUILIBRIO, CUBIERTA DAMPER, PLATE	1				
6	54S-E2659-00	AMORTIGUADOR DE CUBIERTA 2 DAMPER, AIR SHROUD 2	1				
7	54S-E2668-00	AMORTIGUADOR DE CUBIERTA 3 DAMPER, AIR SHROUD 3	1				
8	97602-06220	TORNILLO CON RONDONA SCREW, PAN HEAD W/WASHER	3				
9	97702-60530	TORNILLO ROSCA HEMBRA SCREW, TAPPING	3				
10	54S-E2611-00	VENTILADOR FAN	1				
11	93210-94800	ANILLO O O-RING	1				
12	95822-06016	TORNILLO DE REBORDE BOLT, FLANGE	4				
13	5VV-E3569-00	TAPON CIEGO PLUG, BLIND	1				

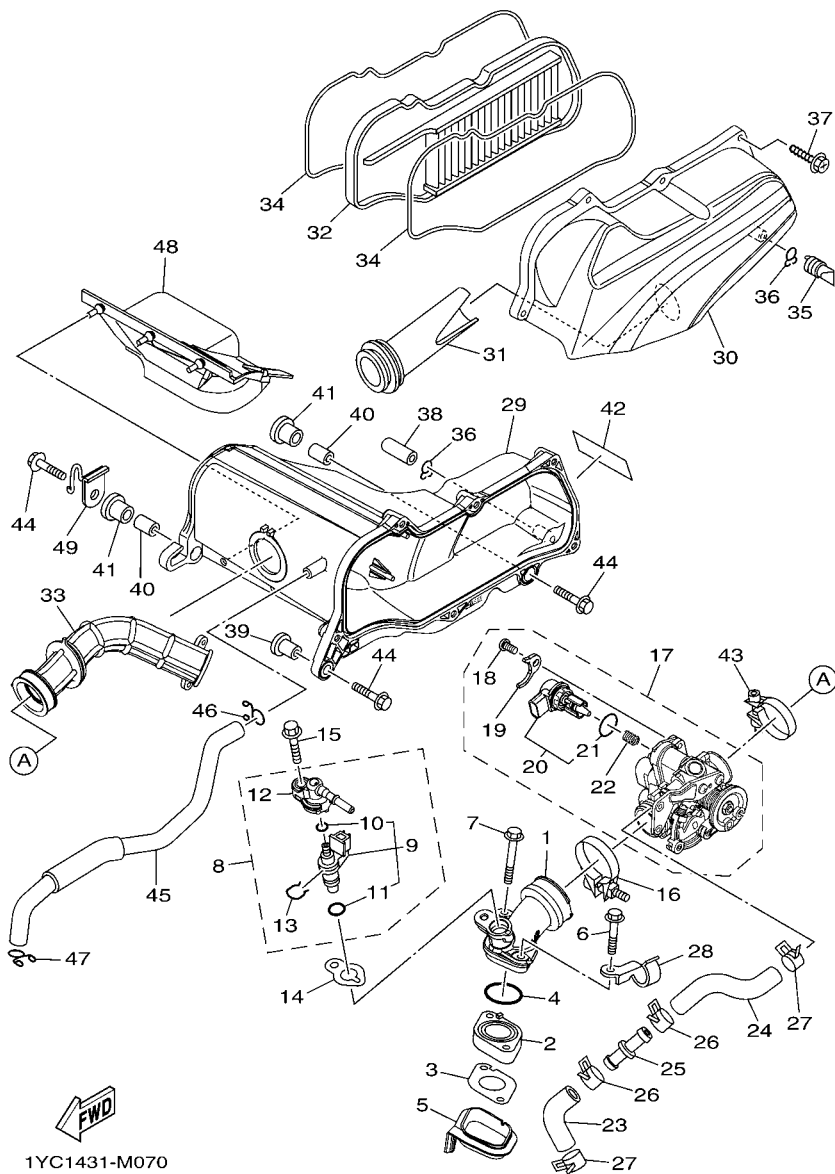
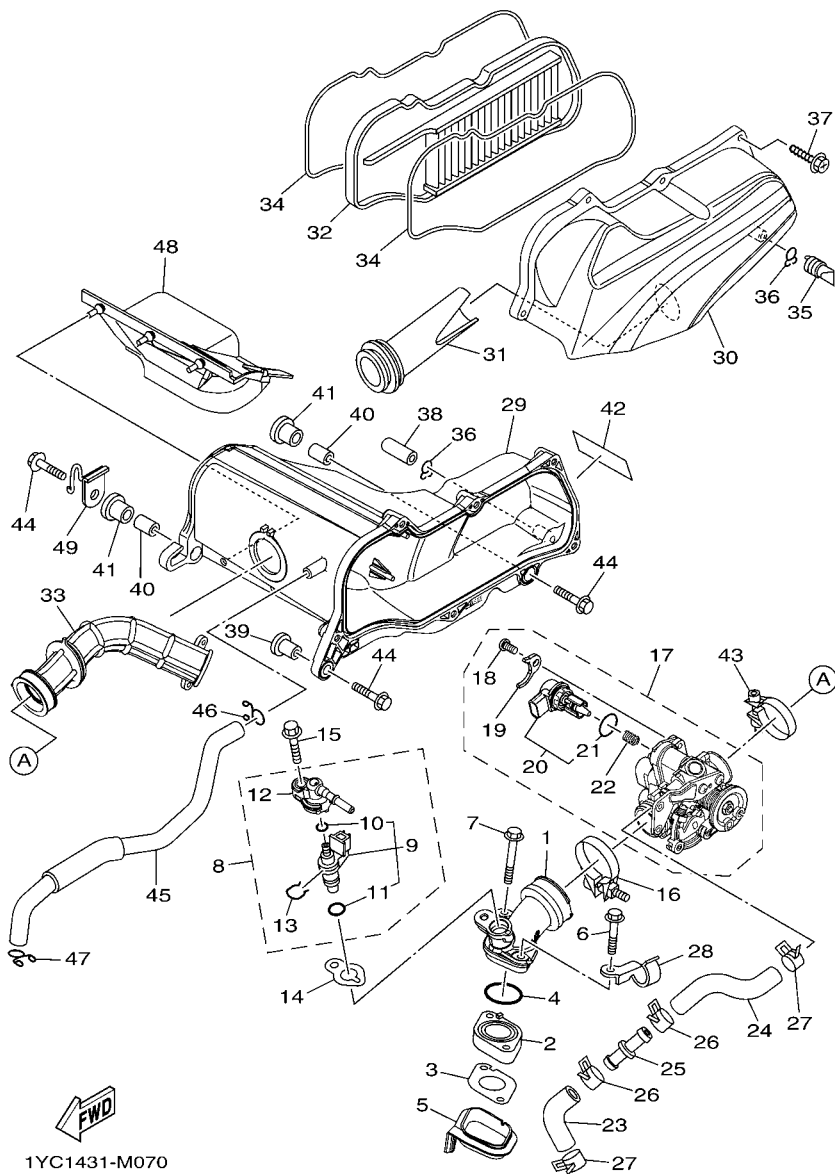


FIG. 7 ADMISION

INTAKE

REF. Nº	CODIGO Nº PART NO.	DESCRIPCION DESCRIPTION	B281				OBSERVACIONES REMARKS
1	1VB-E3585-00	MULTIPLE MANIFOLD	1				
2	54S-E3595-00	TOBERA JOINT	1				
3	54S-E3556-00	EMPAQUE GASKET, MANIFOLD	1				
4	93210-30611	ANILLO O O-RING	1				
5	54S-E3593-00	COJINETE DE RODILLOS DAMPER	1				
6	90105-068A5	TORNILLO BOLT, FLANGE	1				
7	90105-068A6	TORNILLO BOLT, FLANGE	1				
8	54P-E3770-10	INYECTOR INJECTOR ASSY	1				
9	54P-E3761-10	.INYECTOR .INJECTOR	1				
10	54P-E4147-00	..ANILLO O ..O-RING	1				
11	5CA-E4147-00	..ANILLO O ..O-RING	1				
12	54P-E3938-00	.TUBO DE ADMISION .PIPE	1				
13	54P-E4137-00	.PRESILLA .CLIP	1				
14	1YC-E3557-00	EMPAQUE GASKET	1				
15	95812-06025	TORNILLO DE REBORDE BOLT, FLANGE	1				
16	54S-E3474-00	BANDA BAND	1				
17	54S-E3750-10	CAJA DE ACELERADOR COMPL. THROTTLE BODY ASSY	1				
18	98502-06012	.TORNILLO .SCREW, PAN HEAD	1				
19	54P-E4243-00	.PLACA .PLATE	1				
20	54P-H5801-00	.MOTOR .STEPPING MOTOR	1				
21	54P-E416A-00	..ANILLO O ..O-RING	1				
22	54P-E4335-00	.RESORTE DE EMBOLO .SPRING, PLUNGER	1				
23	54S-E3892-00	TUBO DE AIRE 2 HOSE, AIR 2	1				
24	54S-E3895-00	TUBO DE AIRE HOSE, AIR	1				
25	54S-E3815-00	TOBERA 1 JOINT 1	1				
26	90467-15804	PRESILLA CLIP	2				
27	90467-15804	PRESILLA CLIP	2				

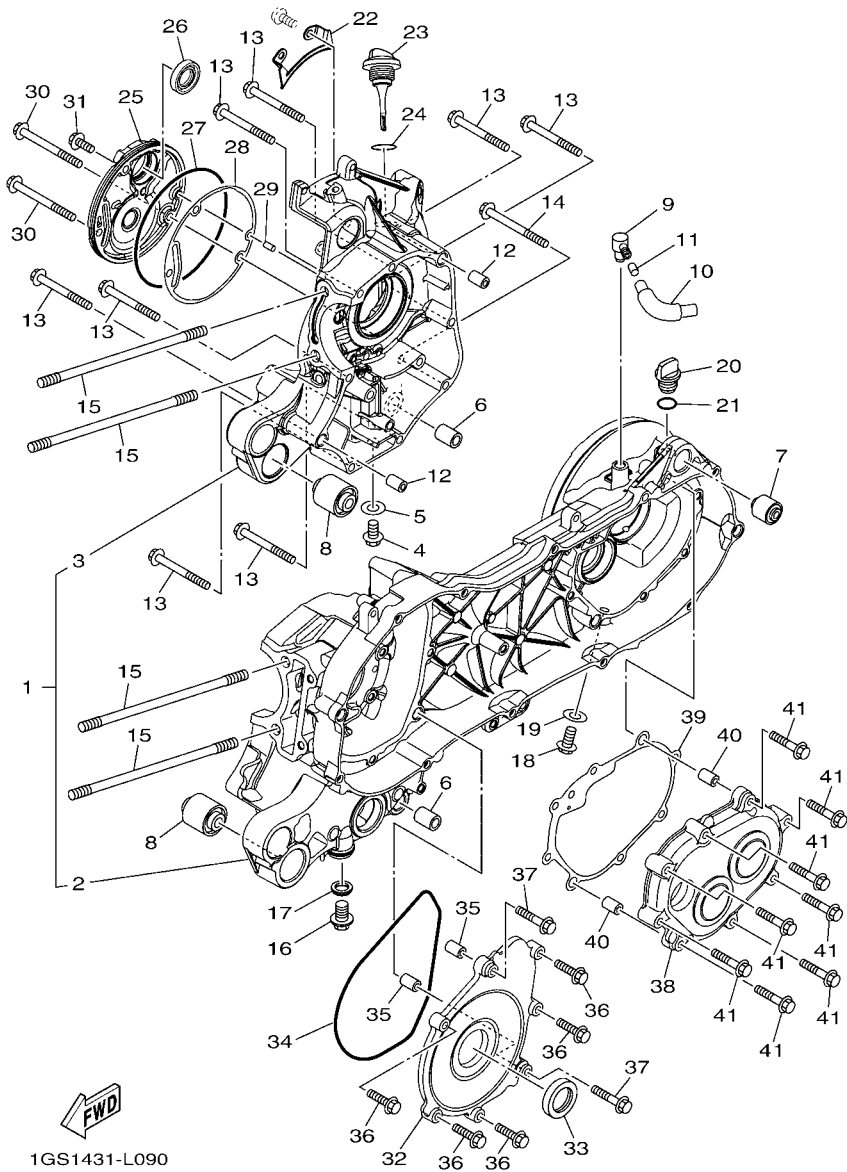


1YC1431-M070

FIG. 7 ADMISION

INTAKE

REF. Nº	CODIGO Nº PART NO.	DESCRIPCION DESCRIPTION	B281			OBSERVACIONES REMARKS
28	54S-E4146-00	PLACA SOPORTE PLATE	1			
29	54S-E4411-00	CAJA FILTRO DEL AIRE 1 CASE, AIR CLEANER 1	1			
30	54S-E4412-00	TAPA CAJA DEL FILTRO 1 CAP, CLEANER CASE 1	1			
31	54S-E4437-00	CONDUCTO DUCT	1			
32	54S-E4450-00	ELEMENTO COMP.FILTRO DE AIRE ELEMENT ASSY, AIR CLEANER	1			
33	54S-E4453-00	UNION DEL FILTRO DEL AIRE 1 JOINT, AIR CLEANER 1	1			
34	54S-E4452-00	SELLO SEAL	2			
35	5TN-E443G-00	TUBO, DRENAJE 2 PIPE, DRAIN 2	1			
36	90467-12807	PRESILLA CLIP	2			
37	97702-50025	TORNILLO ROSCA HEMBRA SCREW, TAPPING	6			
38	5VV-E443E-00	TUBO, DRENAJE PIPE, DRAIN	1			
39	90387-068K1	ESPACIADOR COLLAR	1			
40	90387-064W3	ESPACIADOR COLLAR	2			
41	90480-13013	TAPON GROMMET	2			
42	2SE-F815R-00	ETIQUETA, AVISO 2 LABEL, NOTICE 2	1			
43	54S-E3575-00	BANDA BAND	1			
44	95812-06025	TORNILLO DE REBORDE BOLT, FLANGE	3			
45	54S-E1166-00	TUBO RESPIRADERO 1 PIPE, BREATHER 1	1			UR
	54P-E1166-00	TUBO RESPIRADERO 1 PIPE, BREATHER 1	1			UR
46	90467-13858	PRESILLA CLIP	1			UR
47	90467-13858	PRESILLA CLIP	1			UR
48	54S-E442F-00	PROTECTOR PROTECTOR	1			
49	1YC-E4458-00	GUIA GUIDE	1			



1GS1431-L090

FIG. 9 CARTER

CRANKCASE

REF. Nº	CODIGO Nº PART NO.	DESCRIPCION DESCRIPTION	B281			OBSERVACIONES REMARKS
1	54S-E5150-00	CARTER COMPLETO CRANKCASE ASSY	1			
2	54S-E5111-00	.CARTER MANIVELA 1 .CRANKCASE 1	1			
3	54S-E5121-00	.CARTER MANIVELA 2 .CRANKCASE 2	1			
4	95022-08012	PERNO, DE BRIDA BOLT, FLANGE	1			
5	90430-08818	JUNTA GASKET	1			UR
6	90430-08119	JUNTA GASKET	1			UR
7	54S-F7121-00	BUJE BUSH	2			UR
8	4D1-F2216-00	BUJE DEL AMORTIGUADOR TRASERO BUSH, REAR SHOCK ABSORBER	1			
9	90388-10805	AMORTIGUADOR DAMPER	2			
10	54S-E5371-00	RESPIRADERO BREATHER	1			
11	54S-E5373-00	MANGÜELA DE RESPIRADERO PIPE, BREATHER	1			
12	4D0-E5408-00	ELEMENTO 2 ELEMENT 2	1			
13	99530-10114	PASADOR, DE ESPIGA PIN, DOWEL	2			
14	95022-06060	PERNO, DE BRIDA BOLT, FLANGE	8			
15	95022-06070	PERNO, DE BRIDA BOLT, FLANGE	1			
16	90116-08843	ESPÁRRAGO BOLT, STUD	4			
17	90340-12808	TORNILLO, DE DRENAJE PLUG, STRAIGHT SCREW	1			
18	4YS-E1198-00	EMPAQUE GASKET	1			
19	95812-08016	TORNILLO DE REBORDE BOLT, FLANGE	1			
20	90430-08818	JUNTA GASKET	1			UR
21	90430-08119	JUNTA GASKET	1			UR
22	5VV-E5363-00	TAPON DE ACEITE PLUG, OIL	1			UR
23	93210-148H8	ANILLO O O-RING	1			UR
24	54S-E5113-00	PLACA PLATE	1			
25	1YC-E5362-00	TAPON DEL NIVEL DE ACEITE PLUG, OIL LEVEL	1			
26	5VV-E3769-00	ANILLO O O-RING	1			
27	54S-E5417-00	CUBIERTA DE TAPA COVER, CAP	1			

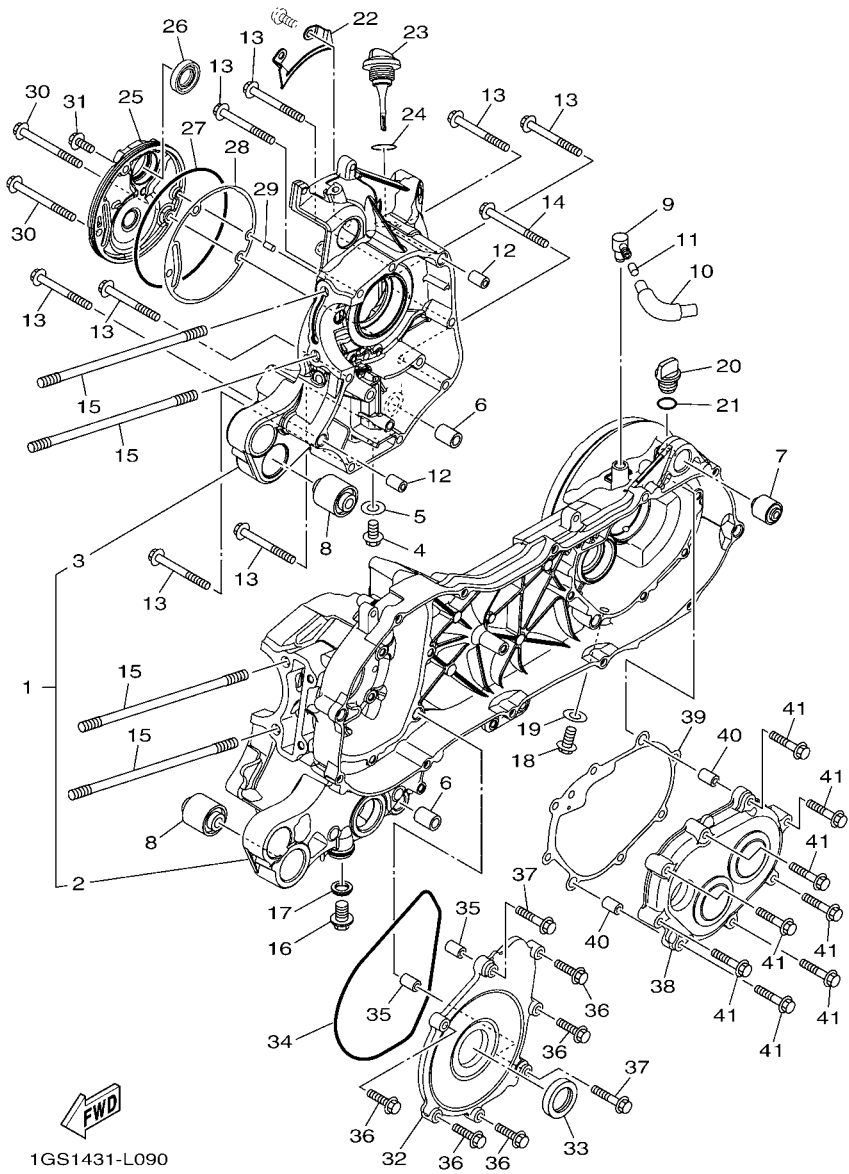
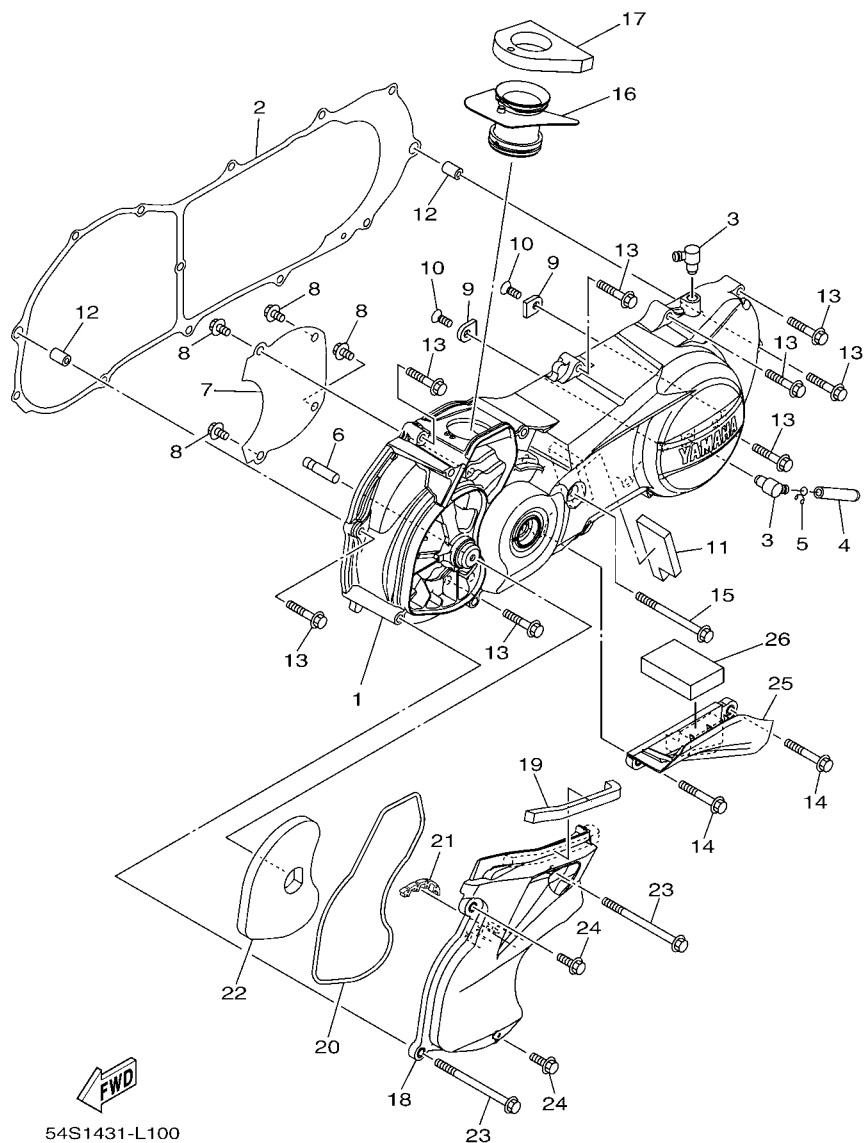


FIG. 9 CARTER

CRANKCASE

REF. Nº	CODIGO Nº PART NO.	DESCRIPCION DESCRIPTION	B281				OBSERVACIONES REMARKS
26	93102-19816	SELLO ACEITE OIL SEAL	1				
27	93211-07804	ANILLO O O-RING	1				
28	1YC-E5453-00	EMPAQ GASKET	1				
29	99480-05010	PASADOR PIN	1				
30	95022-06070	PERNO, DE BRIDA BOLT, FLANGE	2				
31	95022-06016	PERNO, DE BRIDA BOLT, FLANGE	1				
32	54S-E5423-00	CUBIERTA 2 COVER 2	1				
33	93102-25818	SELLO ACEITE OIL SEAL	1				
34	93211-37801	ANILLO O O-RING	1				
35	99530-10114	PASADOR, DE ESPIGA PIN, DOWEL	2				
36	95022-06025	PERNO, DE BRIDA BOLT, FLANGE	5				
37	95022-06035	PERNO, DE BRIDA BOLT, FLANGE	2				
38	54S-E5421-00	TAPA DE CARTER DERECHA COVER, CRANKCASE 2	1				
39	1YC-E5461-00	JUNTA TAPA CARTER DERECHO 2 GASKET, CRANKCASE COVER 2	1				
40	99530-10114	PASADOR, DE ESPIGA PIN, DOWEL	2				
41	95022-06035	PERNO, DE BRIDA BOLT, FLANGE	8				



54S1431-L100

FIG. 10 CUBIERTA DE CARTER 1

CRANKCASE COVER 1

REF. Nº	CODIGO Nº PART NO.	DESCRIPCION DESCRIPTION	B281			OBSERVACIONES REMARKS
1	54S-E5411-00	CUBIERTA DE CARTER 1 COVER, CRANKCASE 1	1			
2	1YC-E5451-00	EMPAQ DE CUBIERTA DE CARTER GASKET, CRANKCASE COVER 1	1			
3	54S-E5371-00	RESPIRADERO BREATHER	2			
4	5P0-E443E-00	TUBO, DRENAJE PIPE, DRAIN	1			
5	90467-110A3	PRESILLA CLIP	1			
6	5VV-E5659-00	EJE SHAFT	1			
7	54S-E5191-00	PLACA PLATE	1			
8	95022-06010	PERNO, DE BRIDA BOLT, FLANGE	4			
9	54S-E5383-00	PLACA CUBIERTA DE ENGRANAJE PLATE, BEARING COVER	2			
10	90151-06811	TORNILLO EMBUTIDO SCREW, COUNTERSUNK	2			
11	54S-E5316-00	AMORTIGUADOR 1 DAMPER 1	1			
12	99530-10114	PASADOR, DE ESPIGA PIN, DOWEL	2			
13	95022-06035	PERNO, DE BRIDA BOLT, FLANGE	8			
14	95022-06045	PERNO, DE BRIDA BOLT, FLANGE	2			
15	95022-06080	PERNO, DE BRIDA BOLT, FLANGE	1			
16	54S-E5473-00	CONDUCTO DE AIRE DUCT, AIR	1			
17	54S-E5408-00	ELEMENTO 2 ELEMENT 2	1			
18	54S-E5471-00	CONDUCTO DE AIRE DUCT, AIR	1			
19	90520-10811	EQUILIBRIO, CUBIERTA DAMPER, PLATE	1			
20	52B-E5472-00	SELLO DE CONDUCTO DE AIRE SEAL, AIR DUCT	1			
21	54S-E5495-00	SELLO DE PROTECTOR 1 SEAL, PROTECTOR 1	1			
22	54S-E5407-00	ELEMENTO 1 ELEMENT 1	1			
23	95822-06090	TORNILLO DE REBORDE BOLT, FLANGE	2			
24	95822-06020	TORNILLO DE REBORDE BOLT, FLANGE	2			
25	54S-E5413-00	CUBIERTA COVER	1			
26	90520-15806	EQUILIBRIO, CUBIERTA DAMPER, PLATE	1			

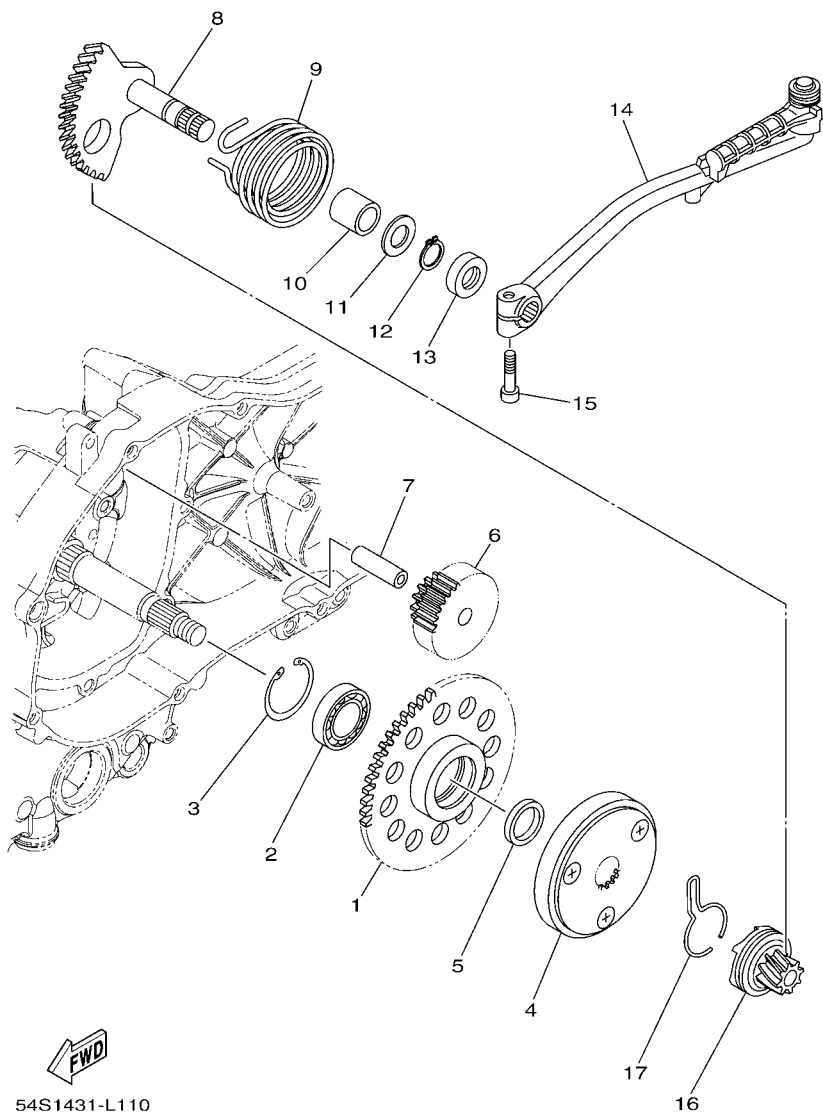
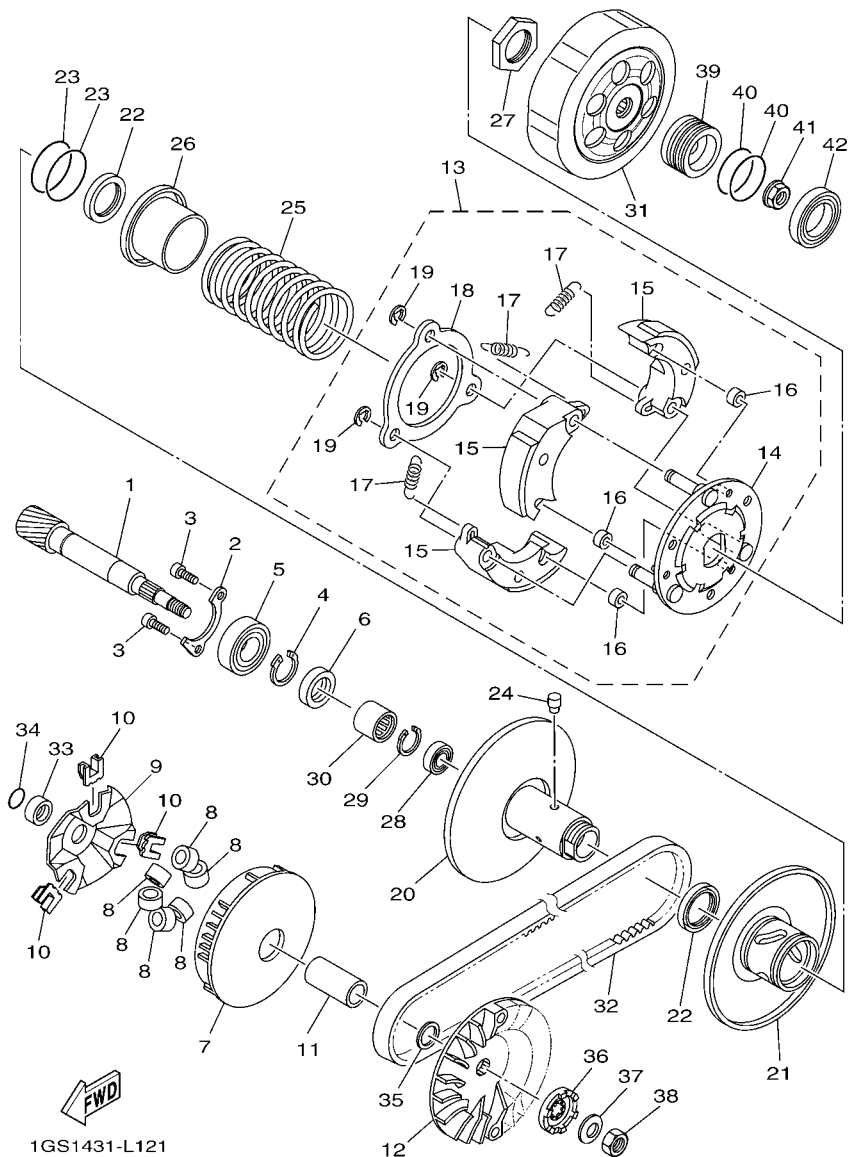


FIG. 11 ARRANQUE

STARTER

REF. N°	CODIGO N° PART NO.	DESCRIPCION DESCRIPTION	B281				OBSERVACIONES REMARKS
1	52B-E5524-00	RUEDA DE ARRANQUE WHEEL, STARTER	1				
2	33S-E5693-00	COJINETE BEARING	1				
3	93420-32808	SEGURO CIRCLIP	1				
4	52B-E5570-00	EMBRAGUE DEL ARRANQUE COMPLETA STARTER CLUTCH ASSY	1				UR
	18S-E5570-00	EMBRAGUE DEL ARRANQUE COMPLETA STARTER CLUTCH ASSY	1				UR
5	33S-E5598-00	COLLAR COLLAR	1				
6	52B-E5512-00	ENGRENAJE NEUTRO GEAR, IDLER 1	1				
7	5P0-E5521-00	EJE 1 SHAFT 1	1				
8	5TL-E5601-00	EJE DE ARR. DE PIE COMPL KICK SHAFT ASSY	1				
9	90508-32768	RESORTE DE TORSION SPRING, TORSION	1				
10	90380-15812	CASQUILLO SOLIDO BUSH, SOLID	1				
11	90201-154E8	ARANDELA, DE PLACA (T=1.0) WASHER, PLATE (T=1.0)	1				
12	99009-15400	PRESILLA REDONDA CIRCLIP	1				
13	93102-15805	SELLO ACEITE OIL SEAL	1				
14	1KP-E5620-00	PEDAL DE ARRANQUE COMPLETO KICK CRANK ASSY	1				
15	91312-06025	TORNILLO BOLT	1				
16	5VV-E5630-00	PINON DE PEDAL COMPLETA KICK PINION ASSY	1				
17	5VV-E5673-00	PRESILLA CLIP	1				

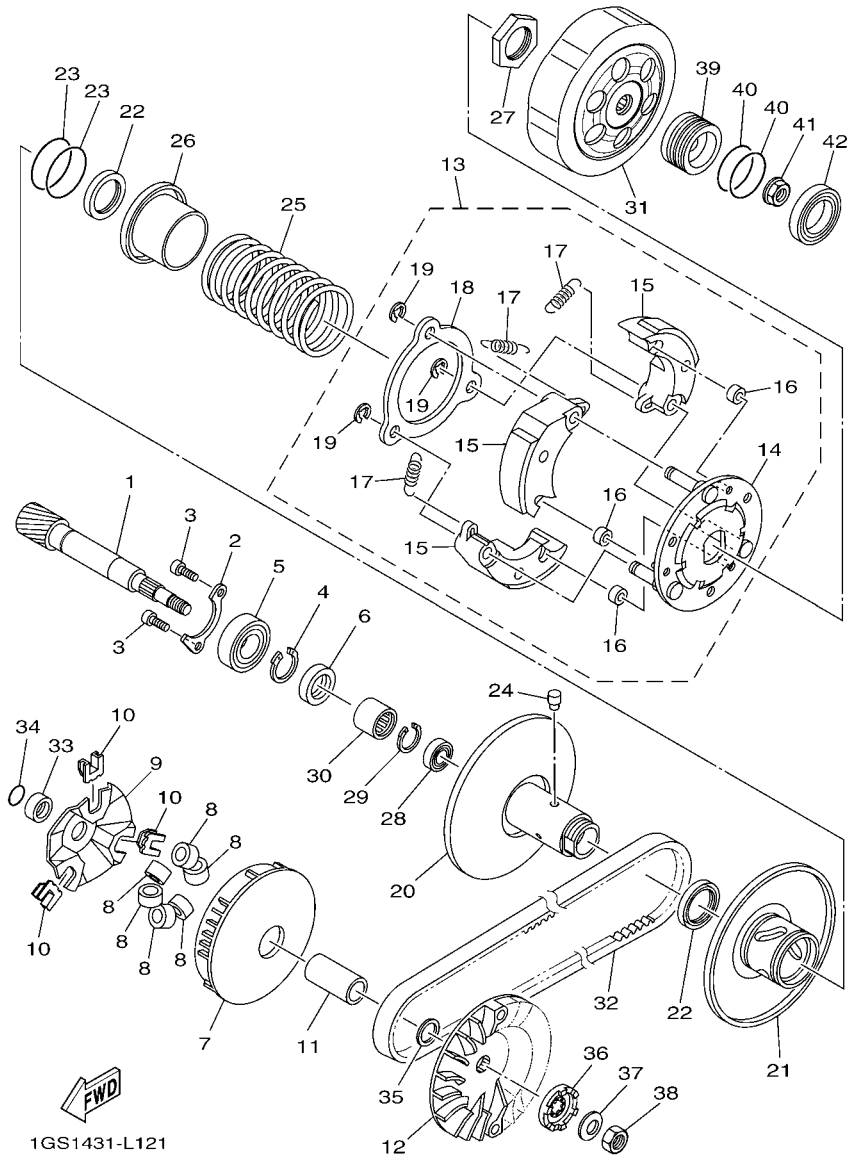


1GS1431-L121

FIG. 12 EMBRAGUE

CLUTCH

REF. Nº	CODIGO Nº PART NO.	DESCRIPCION DESCRIPTION	B281				OBSERVACIONES REMARKS
1	54S-E6111-00	ENGRANAJE TRACC.PRIMARIA GEAR, PRIMARY DRIVE	1				
2	54S-E7471-00	PLACA, DE CUBIERTA PLATE, COVER	1				
3	91312-06010	TORNILLO BOLT	2				
4	99009-17400	PRESILLA REDONDA CIRCLIP	1				
5	93306-253Y9	COJINETE BEARING	1				
6	93102-17805	SELLO ACEÍTE OIL SEAL	1				
7	54S-E7620-00	ROLDANA PRIMARIA MOVIL PRIMARY SLIDING SHEAVE COMP.	1				
8	54S-E7632-00	CONTRAPESO WEIGHT	6				
9	54S-E7623-00	LEVA CAM	1				
10	54S-E7653-00	CORREDERA SLIDER	3				
11	54S-E7674-00	COLLAR COLLAR, GUIDE	1				
12	54S-E7611-00	PISCO FIXADOR DE POREA SHEAVE, PRIMARY FIXED	1				
13	54S-E6620-00	PORTADOR DE EMBRAGUE COMPLETO CLUTCH CARRIER ASSY	1				
14	54S-E6631-00	.PORTADOR COMPL. .CARRIRE COMP.	1				
15	54S-E6623-00	.ZAPATA, PESO DE EMBREAGEM .SHOE, CLUTCH WEIGHT	3				
16	54S-E6629-00	.AMÓRT CONTRAPESO EMBRAGUE .DAMPER, CLUTCH WEIGHT	3				
17	4D0-E6626-00	.RESORTE CONTRAPESO EMBRAGUE 1 .SPRING, CLUTCH WEIGHT 1	3				
18	54S-E6523-00	.PLACA DE CONTRAPESO DE EMPUJE .PLATE, WEIGHT THRUST	3				
19	54S-E6819-00	.SEGURO .CIRCLIP, CLUTCH	3				
20	54S-E7660-00	ROLDANA SECUNDARIA FIJA COMPL. SECONDARY FIXED SHEAVE COMP.	1				
21	54S-E7670-00	ROLDANA SECUNDARIA CORREDIZA SECONDARY SLIDING SHEAVE	1				
22	54S-E7465-00	SELLO SEAL	2				
23	54S-E7465-10	SELLO SEAL	2				
24	54S-E7664-00	PASADOR DE GUIA PIN, GUIDE	3				
25	54S-E7683-00	RESORTE SECUNDARIO SPRING, SECONDARY	1				
26	54S-E7684-00	ASIENTO DE RESORTE SECUNDARIO SEAT, SECONDARY SPRING	1				
27	54S-E7668-00	TUERCA NUT	1				



1GS1431-L121

FIG. 12 EMBRAGUE CLUTCH

REF. Nº	CODIGO Nº PART NO.	DESCRIPCION DESCRIPTION	B281			OBSERVACIONES REMARKS
28	54S-E7678-00	COJINETE BEARING	1			
29	54S-E5744-00	SEGURO CIRCLIP	1			
30	54S-E7678-10	COJINETE BEARING	1			
31	54S-E6611-00	CAJA DE EMBRAGUE COMPLETO CLUTCH HOUSING COMP.	1			
32	54S-E7641-00	CORREA EN V V-BELT	1			UR
---	54P-E7641-00	CORREA EN V V-BELT	1			UR
33	33S-E7645-00	COLLAR COLLAR	1			UR
	1GC-E7645-00	COLLAR COLLAR	1			UR
34	93210-16801	ANILLO O O-RING	1			
35	90201-154E8	ARANDELA, DE PLACA (T=1.0) WASHER, PLATE (T=1.0)	1			
36	1P7-E5657-00	EMBRAGUE SIN RETORNO CLUTCH, ONEWAY	1			
37	90208-12808	ARANDELA DE RESORTE CONICO WASHER, CONICAL SPRING	1			
38	90170-12800	TUERCA NUT	1			
39	54S-E7649-01	ESPACIADOR SPACER	1			
40	93210-258F1	ANILLO O O-RING	2			UR
---	93210-258G2	ANILLO O O-RING	2			UR
41	90179-10803	TUERCA NUT	1			UR
42	93306-006Y7	COJINETE BEARING	1			

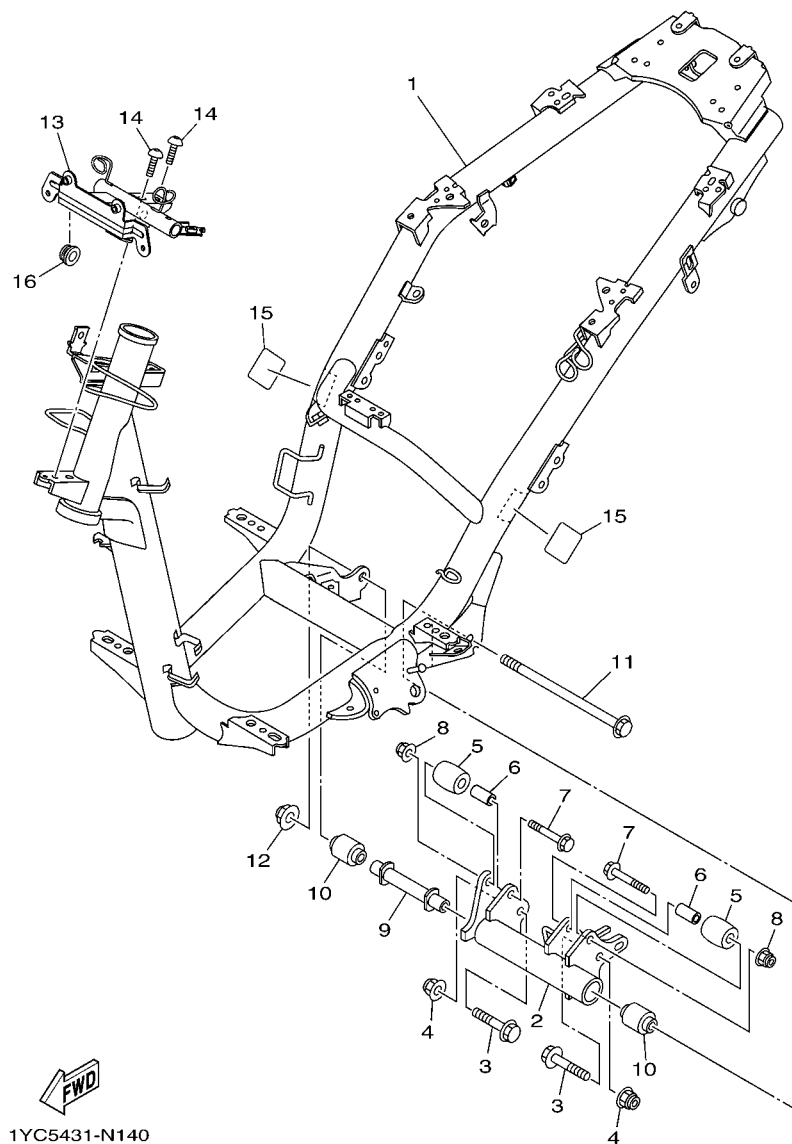


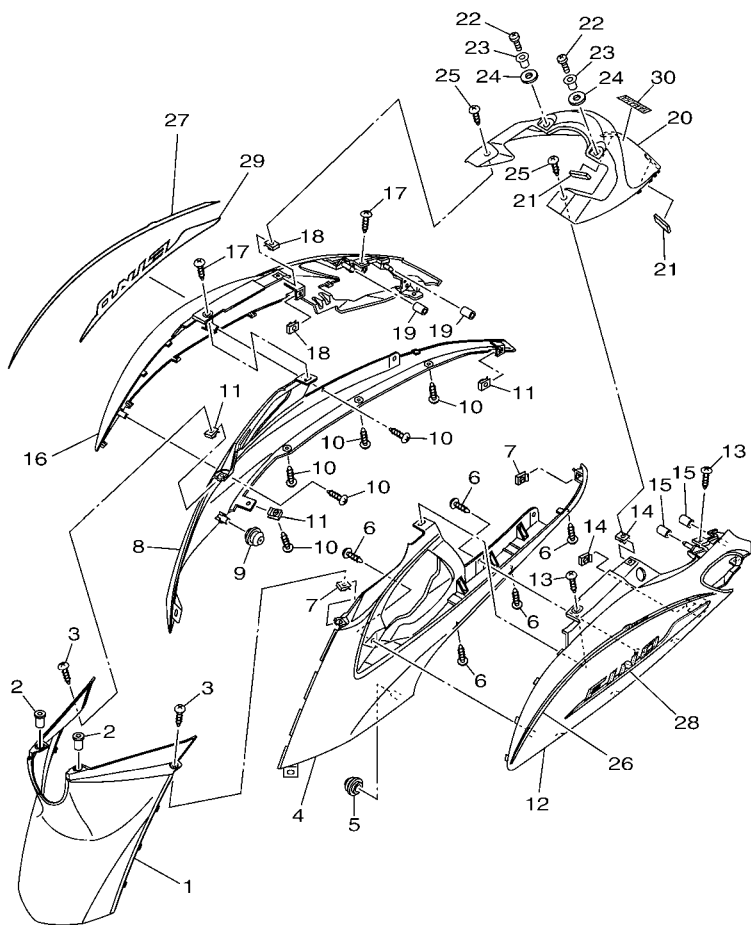
FIG. 14 CUADRO

FRAME

REF. N°	CODIGO N° PART NO.	DESCRIPCION DESCRIPTION	B281				OBSERVACIONES REMARKS
1	B28-F1110-00	ARMAZON COMPLETO FRAME COMP.	1				
2	B28-F1410-00	SOPORTE DE MOTOR COMPLETO ENGINE BRACKET COMP.	1				
3	90105-10283	TORNILLO BOLT, FLANGE	2				
4	95602-10200	TUERCA DE AUTO-CIERRE NUT, U FLANGE	2				
5	5P0-F7114-00	TOPE DE PUNTAL PRINCIPAL STOPPER, MAIN STAND	2				
6	90387-08821	ESPACIADOR COLLAR	2				
7	90105-088E3	TORNILLO BOLT, FLANGE	2				
8	95602-08200	TUERCA DE AUTO-CIERRE NUT, SELF-LOCKING	2				
9	54S-F1459-01	ESPACIADOR SPACER	1				
10	90388-10801	AMORTIGUADOR DAMPER	2				
11	54S-F2141-00	EJE DEL BARCULANTE SHAFT, PIVOT	1				
12	95602-10200	TUERCA DE AUTO-CIERRE NUT, U FLANGE	1				
13	1YC-F8356-10	SOPORTE 1 STAY 1	1				
14	95802-06010	TORNILLO DE REBORDE BOLT, FLANGE	2				
15	90520-02826	EQUILIBRIO, CUBIERTA DAMPER, PLATE	2				
16	90480-16804	TAPON GROMMET	1				

FIG. 16 CUBIERTA LATERAL

SIDE COVER

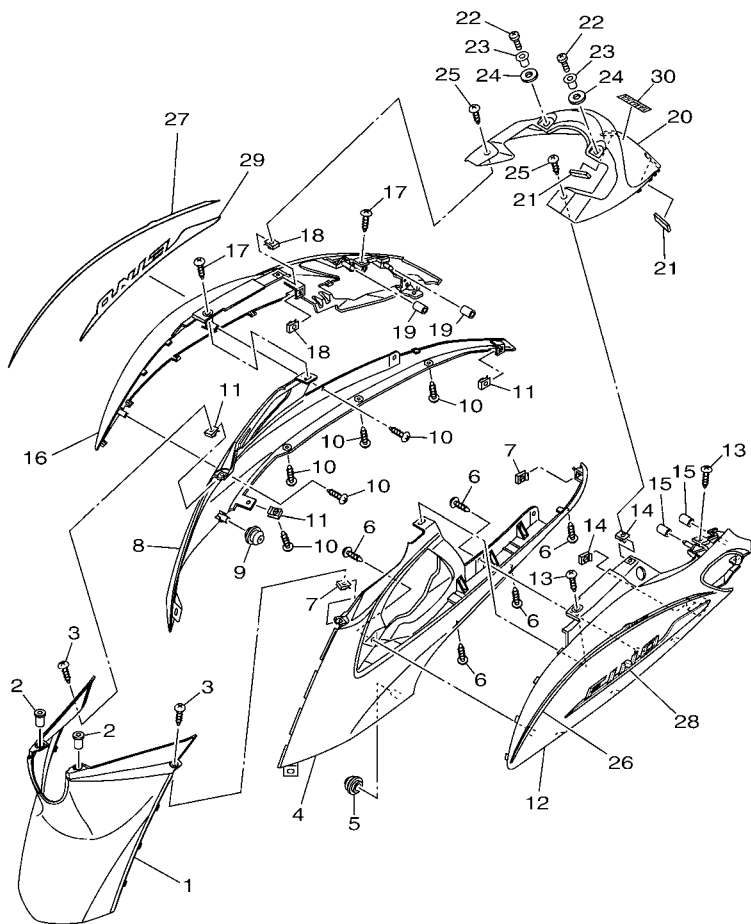


FWD
B281261-P160

REF. Nº	CODIGO Nº PART NO.	DESCRIPCION DESCRIPTION	B281			OBSERVACIONES REMARKS
1	B28-F172W-00-7M	CUBIERTA COVER	1			UR MDS(DRMK,WM6) UR MDS(DRMK,WM6)
	B28-F172W-00-P1	CUBIERTA COVER	1			UR LYNM9(VDOM1) UR LYNM9(VDOM1)
2	90179-05802	TUERCA NUT	2			
3	97702-50016	TORNILLO ROSCA HEMBRA SCREW, TAPPING	2			
4	B28-F1711-00-P0	CUBIERTA LATERAL 1 COVER, SIDE 1	1			MDRM3 PARA DRMK MDRM3 FOR DRMK
	B28-F1711-00-7M	CUBIERTA LATERAL 1 COVER, SIDE 1	1			MDS PARA WM6 MDS FOR WM6
	B28-F1711-00-WN	CUBIERTA LATERAL 1 COVER, SIDE 1	1			CIS PARA VDOM1 CIS FOR VDOM1
5	1YC-F8187-00	TAPON GROMMET	1			
6	97702-50016	TORNILLO ROSCA HEMBRA SCREW, TAPPING	5			
7	90183-05807	TUERCA DE RESORTE NUT, SPRING	2			
8	B28-F1721-00-P0	CUBIERTA LATERAL 2 COVER, SIDE 2	1			MDRM3 PARA DRMK MDRM3 FOR DRMK
	B28-F1721-00-7M	CUBIERTA LATERAL 2 COVER, SIDE 2	1			MDS PARA WM6 MDS FOR WM6
	B28-F1721-00-WN	CUBIERTA LATERAL 2 COVER, SIDE 2	1			CIS PARA VDOM1 CIS FOR VDOM1
9	1YC-F8187-00	TAPON GROMMET	1			
10	97702-50016	TORNILLO ROSCA HEMBRA SCREW, TAPPING	6			
11	90183-05807	TUERCA DE RESORTE NUT, SPRING	3			
12	B28-F1731-00-P0	TAPA LATERAL 3 COVER, SIDE 3	1			UR PARA DRMK UR FOR DRMK
	B28-F1731-00-P1	TAPA LATERAL 3 COVER, SIDE 3	1			UR PARA WM6 UR FOR WM6
	B28-F1731-00-P2	TAPA LATERAL 3 COVER, SIDE 3	1			UR PARA VDOM1 UR FOR VDOM1
13	97702-50016	TORNILLO ROSCA HEMBRA SCREW, TAPPING	2			
14	90183-05807	TUERCA DE RESORTE NUT, SPRING	2			
15	90445-08834	TUBO HOSE	2			
16	B28-F1741-00-P0	TAPA LATERAL 4 COVER, SIDE 4	1			UR PARA DRMK UR FOR DRMK
	B28-F1741-00-P1	TAPA LATERAL 4 COVER, SIDE 4	1			UR PARA WM6 UR FOR WM6
	B28-F1741-00-P2	TAPA LATERAL 4 COVER, SIDE 4	1			UR PARA VDOM1 UR FOR VDOM1
17	97702-50016	TORNILLO ROSCA HEMBRA SCREW, TAPPING	2			
18	90183-05807	TUERCA DE RESORTE NUT, SPRING	2			

FIG. 16 CUBIERTA LATERAL

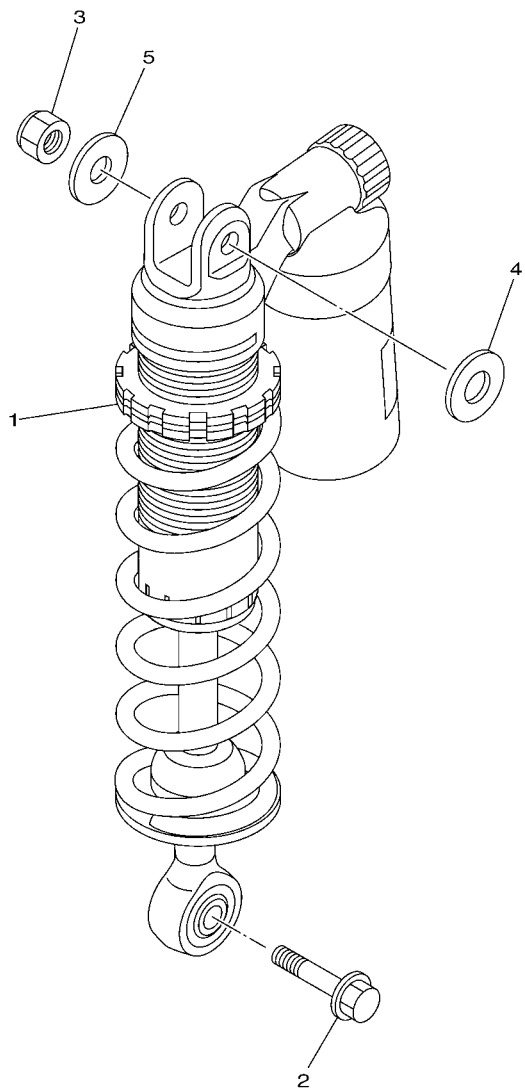
SIDE COVER



B281261-P160

REF. Nº	CODIGO Nº PART NO.	DESCRIPCION DESCRIPTION	B281				OBSERVACIONES REMARKS
19	90445-08834	TUBO HOSE	2				
20	B28-F171E-00-7M	CUBIERTA LATERAL 5 COVER, SIDE 5	1				UR MDS(DRMK,WM6) UR MDS(DRMK,WM6)
	B28-F171E-00-P1	CUBIERTA LATERAL 5 COVER, SIDE 5	1				UR LYNM9(VDOM1) UR LYNM9(VDOM1)
21	90520-03802	EQUILIBRIO, CUBIERTA DAMPER, PLATE	2				
22	98907-06016	TORNILLO DE LIGAR SCREW, BIND	2				
23	90387-06814	ESPACIADOR COLLAR	2				
24	90202-09802	ARANDELA DE PLANA WASHER, PLATE	2				
25	97702-50012	TORNILLO ROSCA HEMBRA SCREW, TAPPING	2				
26	1YC-F17AK-00	GRAFICO 24 GRAPHIC 24	1				UR PARA DRMK UR FOR DRMK
	1YC-F17AK-10	GRAFICO 24 GRAPHIC 24	1				UR PARA WM6 UR FOR WM6
	1YC-F17AK-20	GRAFICO 24 GRAPHIC 24	1				UR PARA VDOM1 UR FOR VDOM1
27	1YC-F17AL-00	GRAFICO 25 GRAPHIC 25	1				UR PARA DRMK UR FOR DRMK
	1YC-F17AL-10	GRAFICO 25 GRAPHIC 25	1				UR PARA WM6 UR FOR WM6
	1YC-F17AL-20	GRAFICO 25 GRAPHIC 25	1				UR PARA VDOM1 UR FOR VDOM1
28	1YC-F173B-20	EMBLEMA 3D EMBLEM 3D	1				
29	1YC-F174B-20	EMBLEMA 3D EMBLEM 3D	1				
30	1YC-F153E-40	EMBLEMA, YAMAHA EMBLEM, YAMAHA	1				UR PARA DRMK UR FOR DRMK
	1YC-F153E-00	EMBLEMA, YAMAHA EMBLEM, YAMAHA	1				UR PARA WM6 UR FOR WM6
	1YC-F153E-20	EMBLEMA, YAMAHA EMBLEM, YAMAHA	1				UR PARA VDOM1 UR FOR VDOM1

FIG. 17 BRAZO TRASERO & SUSPENSION REAR ARM & SUSPENSION

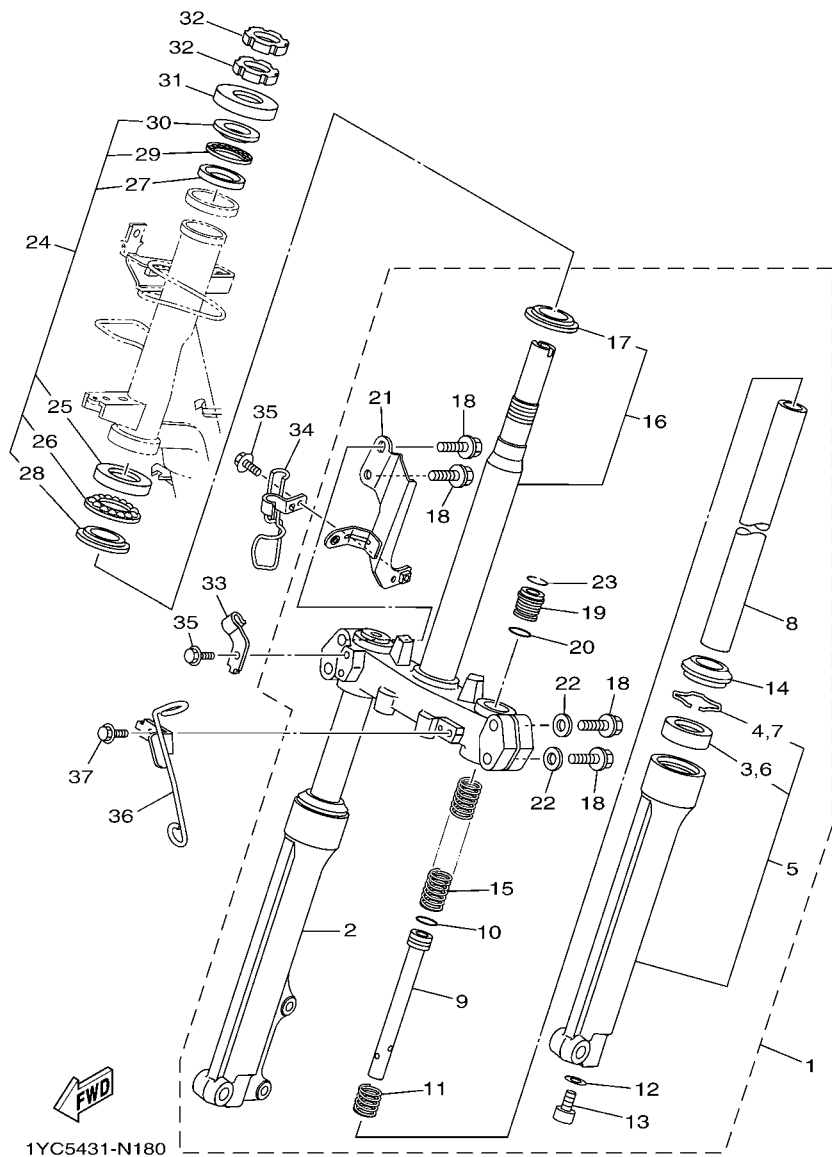


FWD
1YC8431-N170

REF. N°	CODIGO N° PART NO.	DESCRIPCION DESCRIPTION	B281				OBSERVACIONES REMARKS
1	1YC-F2210-00	AMORTIGUADOR TRASERO COMPLETO SHOCK ABSORBER ASSY, REAR	1				
2	90105-08861	TORNILLO BOLT, FLANGE	1				
3	95302-10600	TUERCA NUT, HEX.	1				
4	90201-12028	ARANDELA PLANA WASHER, PLATE	1				
5	90201-10065	ARANDELA PLANA WASHER, PLATE	1				

FIG. 18 DIRECCION

STEERING



REF. Nº	CODIGO Nº PART NO.	DESCRIPCION DESCRIPTION	B281				OBSERVACIONES REMARKS
1	1YC-F3100-00	HORQUILLA DELANTERA COMPLETA FRONT FORK ASSY (0035,SL)	1				
2	54S-F3136-00	.TUBO EXTERIOR (DERECHO) .TUBE, OUTER (RIGHT)(0035,SL)	1				
3	3AY-F3145-00	..RETEN DE ACEITE ..OIL SEAL	1				
4	5P0-F3156-00	..ANILLO DE ENGANCHE ..RING, SNAP	1				
5	54S-F3126-00	.TUBO EXTERIOR (IZQUIERDO) .TUBE, OUTER (LEFT)(0035,SL)	1				
6	3AY-F3145-00	..RETEN DE ACEITE ..OIL SEAL	1				
7	5P0-F3156-00	..ANILLO DE ENGANCHE ..RING, SNAP	1				
8	54P-F3110-10	.TUBO INTERIOR COMPLETO 1 .INNER TUBE COMP.1	2				
9	28D-F3170-00	.CILINDRO COMPL. DE HORQ DELANT .CYLINDER COMP., FRONT FORK	2				
10	2JG-F3157-00	.ANILLO DEL PISTON .RING, PISTON	2				
11	5D9-F3152-00	.RESORTE DE SUBENSAMBLE .SPRING, SUB	2				
12	2BU-F3158-00	.EMPAQUE .GASKET	2				
13	278-F3181-50	.TORNILLO CABEZAHEXAGONAL .BOLT, HEXAGON SOCKET HEAD	2				
14	5LM-F3144-00	.GUARDAPOLVO .SEAL, DUST	2				
15	54P-F3141-10	.RESORTE HORQUILLA DELANT. .SPRING, FRONT FORK	2				
16	4D0-F3340-00	..PLATINA INFERIOR COMPLETA ..UNDER BRACKET COMP.	1				
17	156-F3411-00	..PISTA DE BOLAS 1 ..RACE, BALL 1	1				
18	4D0-F3346-00	..PERNO 1 ..BOLT 1	4				
19	1FC-F3111-10	..PERNO DE TAPA ..BOLT, CAP	2				
20	2JG-F3147-00	..ARO ..O-RING	2				
21	1YC-F334G-00	..SOPORTE 1 ..BRACKET 1	1				
22	4D0-F3165-00	..ARANDELA DE FIELTRO ..WASHER, FELT	2				
23	5P0-F3153-00	..ANILLO DE ENGANCHE ..RING, SNAP	2				
24	1YC-WF34A-01	BEARING KIT, STEERING BEARING KIT, STEERING	1				
25	50P-F3412-10	..PISTA DE BOLAS 2 ..RACE, BALL 2	1				
26	50P-F341E-10	..RETEN DE COJINETE ..RETAINER, BALL BEARING	1				
27	50P-F3412-00	..PISTA DE BOLAS 2 ..RACE, BALL 2	1				

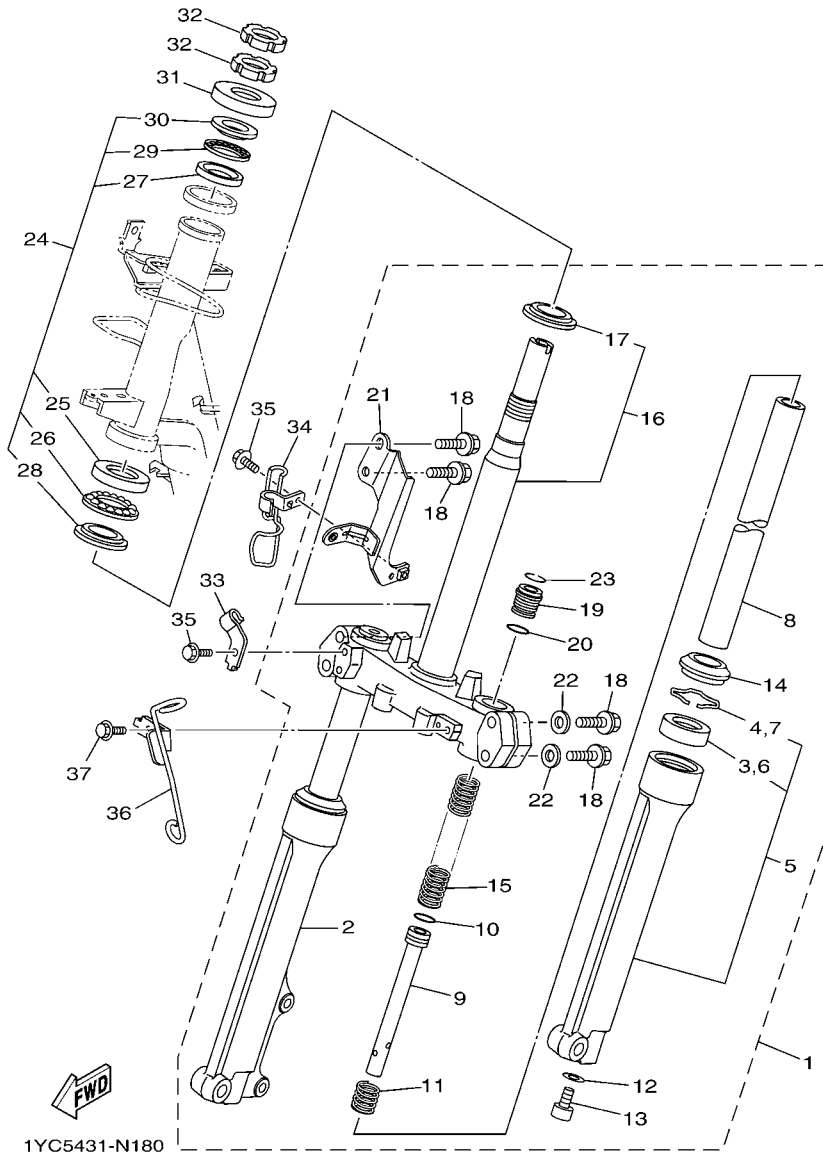


FIG. 18 DIRECCION

STEERING

REF. N°	CODIGO N° PART NO.	DESCRIPCION DESCRIPTION	B281				OBSERVACIONES REMARKS
28	156-F3411-00	.PISTA DE BOLAS 1 .RACE, BALL 1	1				
29	50P-F341E-00	.RETEN DE COJINETE .RETAINER, BALL BEARING	1				
30	50P-F3411-00	.PISTA DE BOLAS 1 .RACE, BALL 1	1				
31	5VV-F3416-00	CUBIERTA DE BASE DE BOLA 2 COVER, BALL RACE 2	1				
32	90179-25802	TUERCA NUT	2				
33	4D0-F5875-00	SOPORTE DE MANGUERA FRENO 1 HOLDER, BRAKE HOSE 1	1				
34	54S-F5876-00	SOPORTE DE MANGUERA FRENO 2 HOLDER, BRAKE HOSE 2	1				
35	95802-06010	TORNILLO DE REBORDE BOLT, FLANGE	2				
36	1YC-F1161-00	SOPORTE DE CABLE HOLDER, CABLE	1				
37	95802-06010	TORNILLO DE REBORDE BOLT, FLANGE	1				

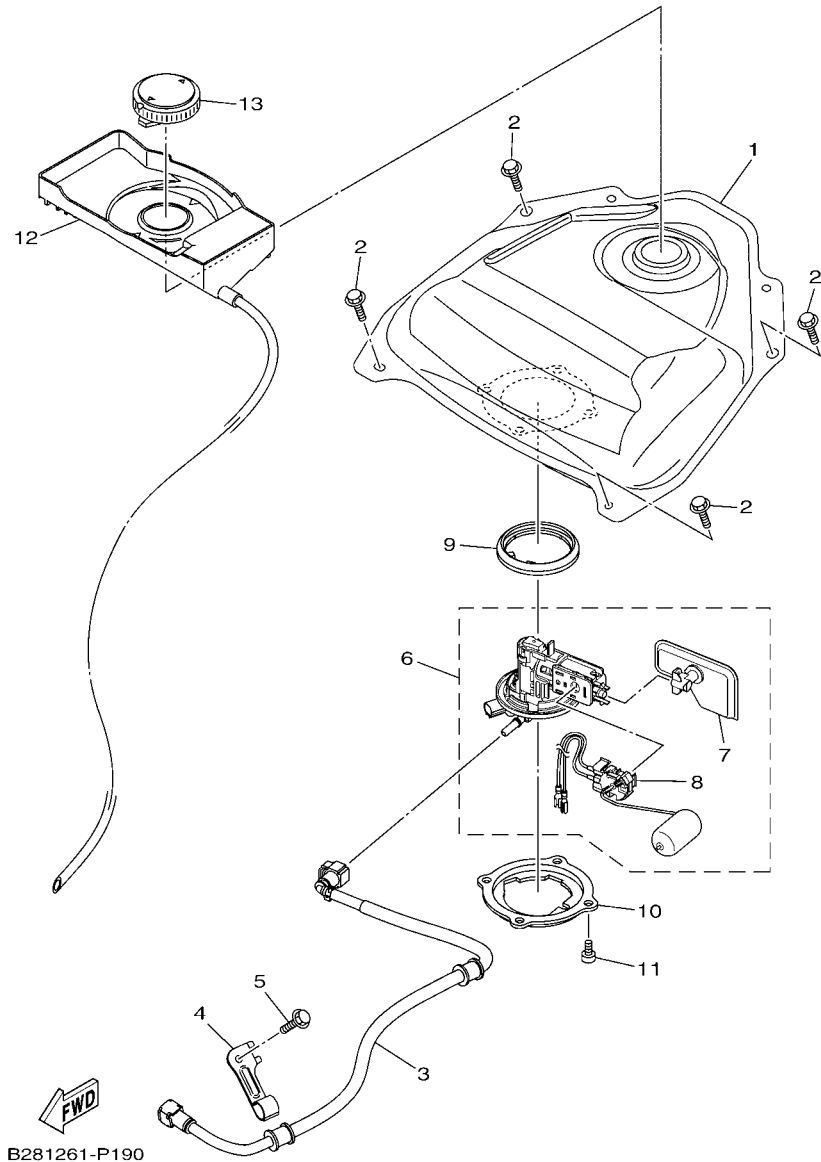
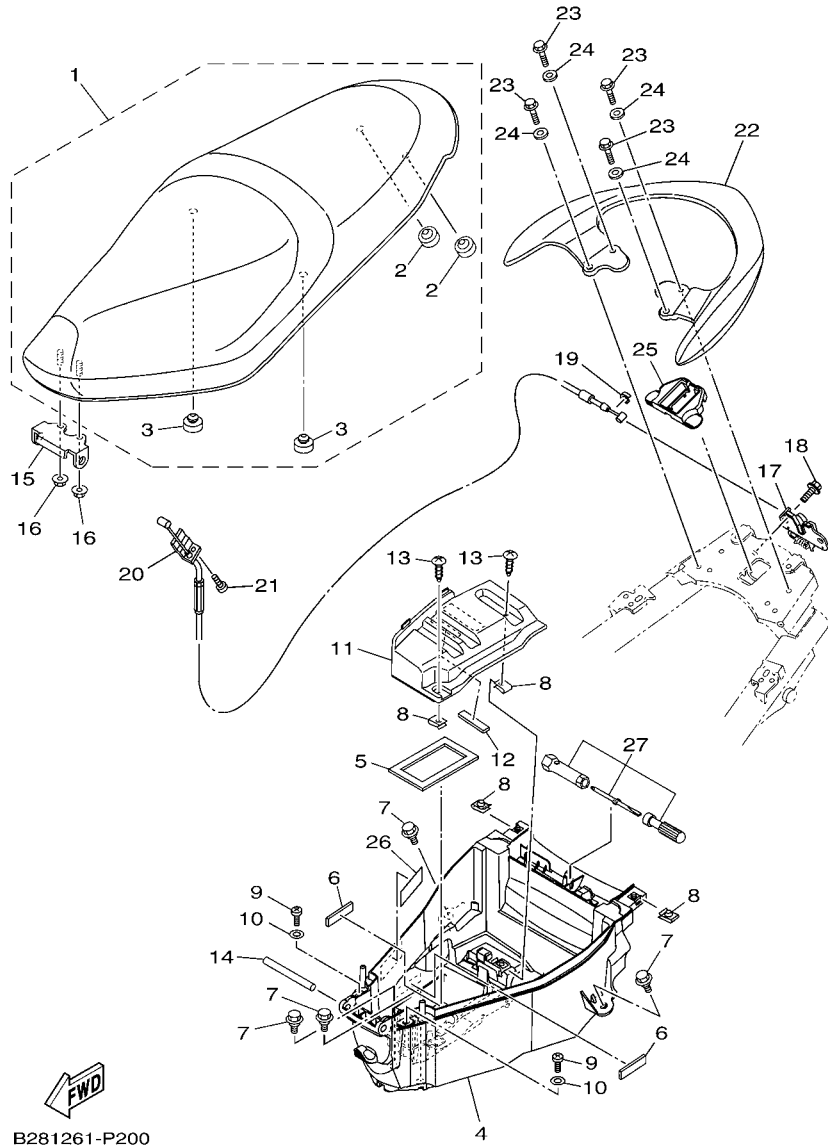


FIG. 19 DEPOSITO DE COMBUSTIBLE FUEL TANK

REF. Nº	CODIGO Nº PART NO.	DESCRIPCION DESCRIPTION	B281				OBSERVACIONES REMARKS
1	B28-F4110-00	DEPOSITO DE COMBUSTIBLE COMP. FUEL TANK COMP.	1				
2	90119-06137	TORNILLO CON ARANDELA BOLT, WITH WASHER	4				
3	54S-E3971-00	ANILLO DE ESPACIADOR PIPE, FUEL 1	1				
4	54S-F419F-00	SOPORTE BRACKET, CANISTOR	1				
5	95022-06010	PERNO, DE BRIDA BOLT, FLANGE	1				
6	54P-E3907-11	BOMBA DE COMBUSTIBLE COMPLETA FUEL PUMP COMP.	1				
7	54P-E3915-00	.FILTRO .FILTER, FUEL SUCTION	1				
8	54P-H5752-00	.UNIDAD TRANSM. MED. COMBUST. .SENDER UNIT ASSY, FUEL METER	1				
9	54S-F414G-00	SELLO SEAL	1				
10	54S-F4491-00	SOPORTE BOMBA COMBUSTIBLE BRACKET, FUEL PUMP	1				
11	91312-05010	TORNILLO BOLT	4				
12	1YC-F414A-10	CUBIERTA DE LLENADOR COVER, FILLER	1				
13	54S-F4610-00	TAPA COMPLETA CAP ASSY	1				

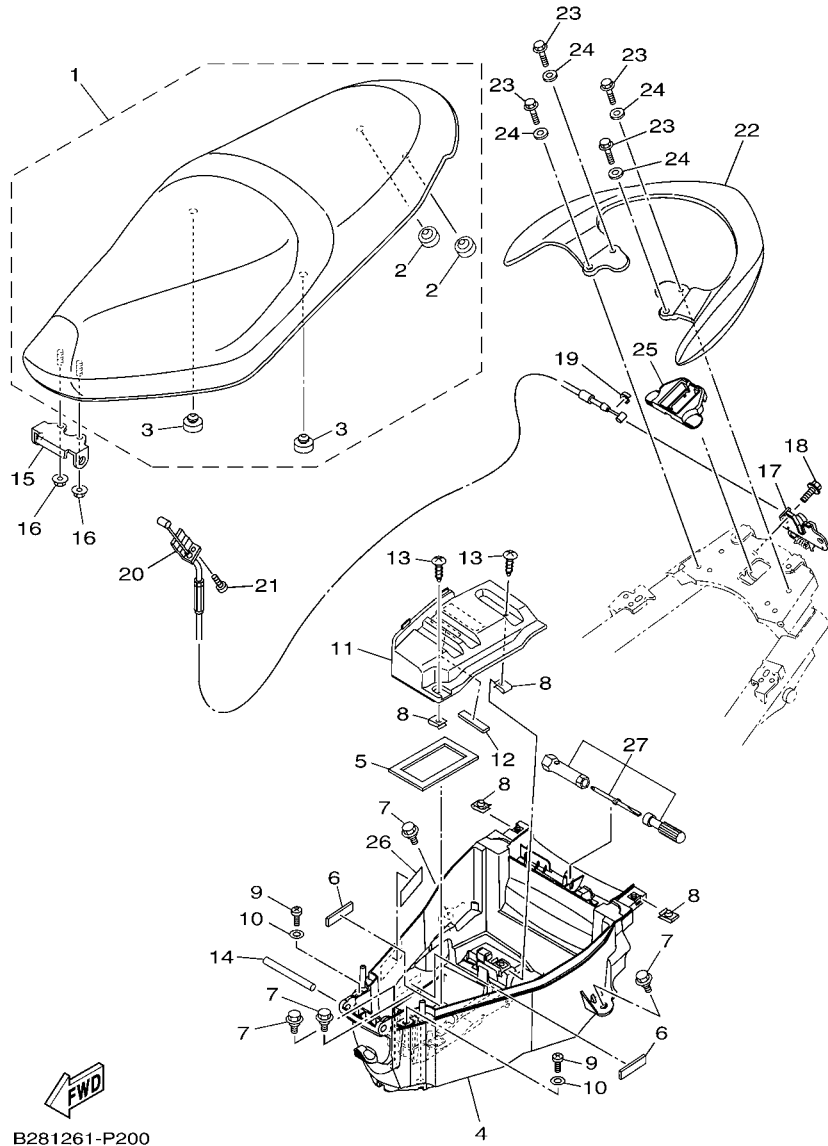


B281261-P200

FIG. 20 ASIENTO

SEAT

REF. Nº	CODIGO Nº PART NO.	DESCRIPCION DESCRIPTION	B281			OBSERVACIONES REMARKS
1	1YC-F4730-60	SILLIN DOBLE COMPLETO DOUBLE SEAT ASSY (DARKGRAY/YB)	1			PARA DRMK,VDOM1 FOR DRMK,VDOM1
	1YC-F4730-70	SILLIN DOBLE COMPLETO DOUBLE SEAT ASSY (BLACK/BROWN)	1			PARA WM6 FOR WM6
2	2JK-F4741-00	.COJIN DE ASIENTO .PAD, SEAT	2			
3	33S-F4741-00	.COJIN DE ASIENTO .PAD, SEAT	2			
4	1YC-F4704-00	CAJA COMPLETA BOX ASSY	1			
5	54S-H2176-00	AMORTIGUADOR DAMPER	1			
6	90520-03806	EQUILIBRIO, CUBIERTA DAMPER, PLATE	2			
7	90109-06202	PERNO BOLT	4			
8	90183-05807	TUERCA DE RESORTE NUT, SPRING	4			
9	98502-05016	TORNILLO SCREW, PAN HEAD	2			
10	90201-05812	ARANDELA PLANA WASHER, PLATE	2			
11	54S-H2129-00	CUBIERTA DE BATERIA COVER, BATTERY	1			
12	90520-03806	EQUILIBRIO, CUBIERTA DAMPER, PLATE	1			
13	97702-50012	TORNILLO ROSCA HEMBRA SCREW, TAPPING	2			
14	5VV-F4727-00	PASADOR ACCESORIO DE ASIENTO PIN, SEAT FITTING	1			
15	54S-F4726-00	HINGE SEAT HINGE, SEAT	1			
16	95702-06500	TUERCA DE BRIDA NUT, FLANGE	2			
17	5P0-F4780-01	CERRADURA SILLIN COMPLETO SEAT LOCK ASSY	1			
18	98502-06010	TORNILLO SCREW, PAN HEAD	2			
19	5YP-F4768-00	TOPE STOPPER	1			
20	1YC-F478E-00	CABLE CABLE, SEAT LOCK	1			
21	98502-05010	TORNILLO SCREW, PAN HEAD	1			
22	1YC-F4773-00-P6	MANIJA DE ASIENTO HANDLE, SEAT (1258,MDRM3)	1			UR PARA DRMK UR FOR DRMK
	1YC-F4773-00-P1	MANIJA DE ASIENTO HANDLE, SEAT (1124,WM6)	1			UR PARA WM6 UR FOR WM6
	1YC-F4773-00-P7	MANIJA DE ASIENTO HANDLE, SEAT (0858,VDOM1)	1			UR PARA VDOM1 UR FOR VDOM1
23	95822-06020	TORNILLO DE REBORDE BOLT, FLANGE	4			
24	90201-06864	ARANDELA PLANA WASHER, PLATE	4			



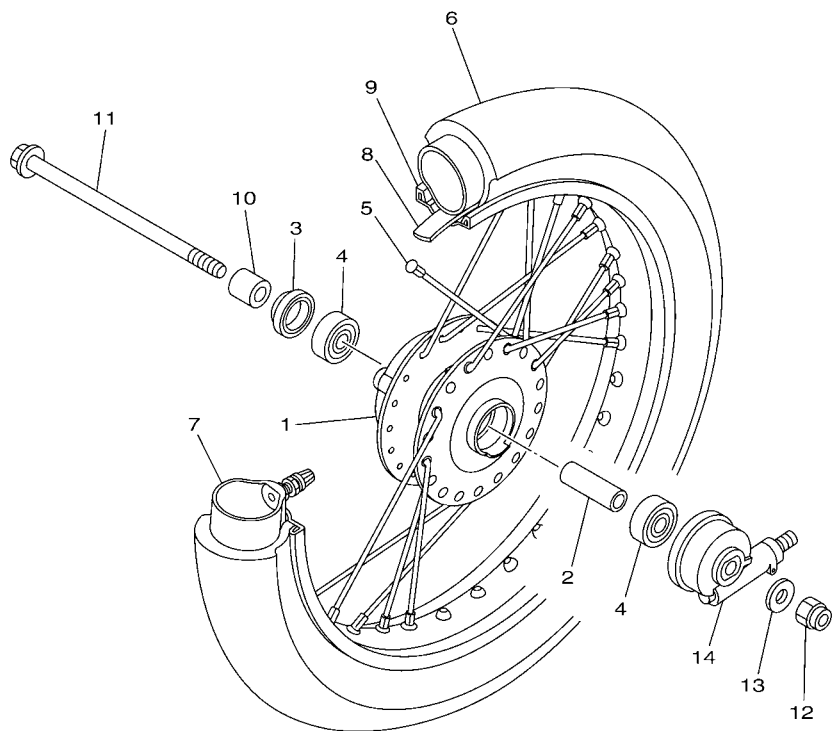
B281261-P200

FIG. 20 ASIENTO

SEAT

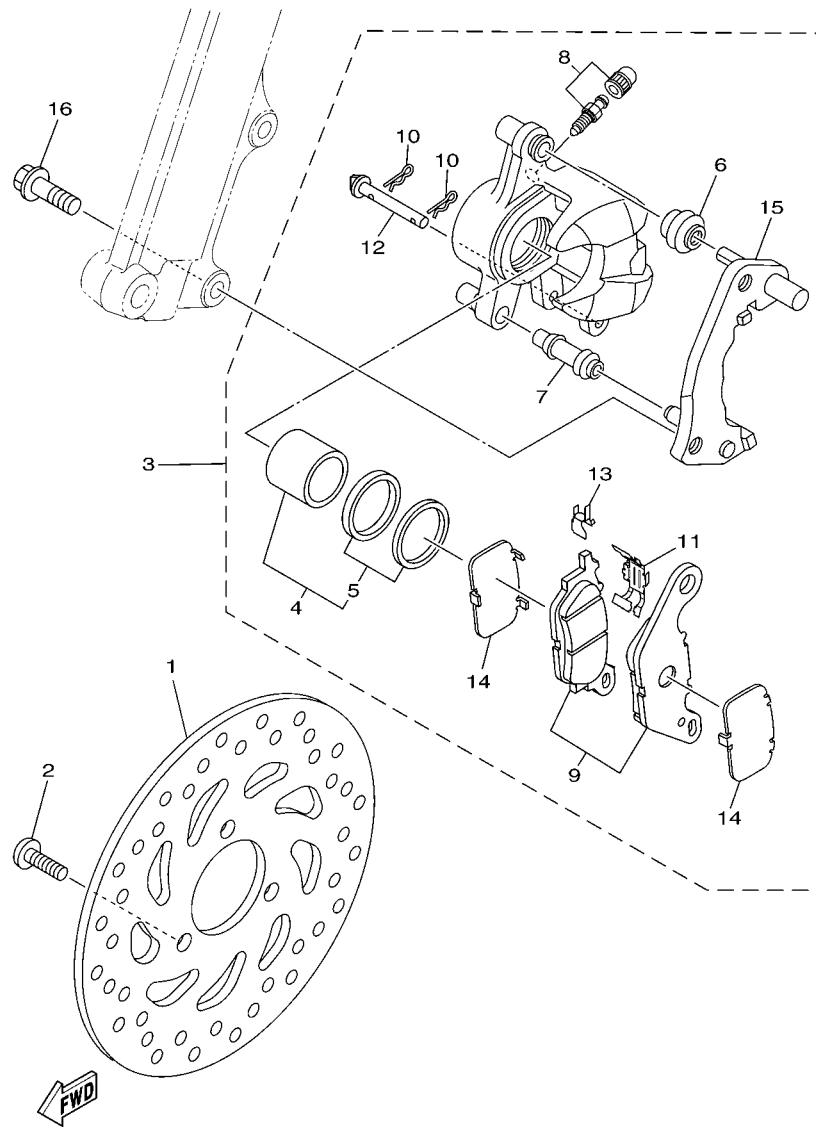
REF. Nº	CODIGO Nº PART NO.	DESCRIPCION DESCRIPTION	B281				OBSERVACIONES REMARKS
25	1GS-F1978-00	PROTECTOR DE CUADRO PROTECTOR, FRAME	1				
26	2BN-F1668-00	ETIQUETA DE FRANJA LABEL, TIRE	1				
27	1YC-F8100-00	JUEGO DE HERRAMIENTAS TOOL KIT	1				

FIG. 21 FRONT WHEEL FOR SPOKE WHEEL FRONT WHEEL FOR SPOKE WHEEL




54S1431-L220

REF. Nº	CODIGO Nº PART NO.	DESCRIPCION DESCRIPTION	B281				OBSERVACIONES REMARKS
1	54S-F5111-00-35	MASA DELANTERA HUB, FRONT (0035,SL)	1				SL
2	90560-10292	SEPARADOR SPACER	1				
3	93106-20808	SELLO ACEITE OIL SEAL	1				
4	93306-300YF	COJINETE BEARING	2				
5	5VV-F5104-00	JUEGO DE RAYOS DELANTERO SPOKE SET, FRONT	1				
6	94107-14813	NEUMATICO TIRE (70/90-14 M/C 34P NF59E)	1				INOUE (IRC)
7	94207-14807	TUBO (70/90-14M/C) TUBE (70/90-14M/C)	1				INOUE (IRC)
8	94307-14801	BANDA DE ARO (22-14) BAND, RIM (22-14)	1				INOUE (IRC)
9	94414-14800	ARO (1.40-14) RIM (1.40-14) (CROME)	1				INOUE (IRC)
10	90387-10837	ESPACIADOR COLLAR	1				
11	3NA-F5181-01	EJE DE LA RUEDA AXLE, WHEEL	1				
12	90185-10811	TUERCA AUTOBLOCANTE NUT, SELF-LOCKING	1				
13	90201-10831	ARANDELA PLANA WASHER, PLATE	1				
14	5VV-F5190-01	UNIDAD DE ENGRANAJE COMPLETA GEAR UNIT ASSY	1				

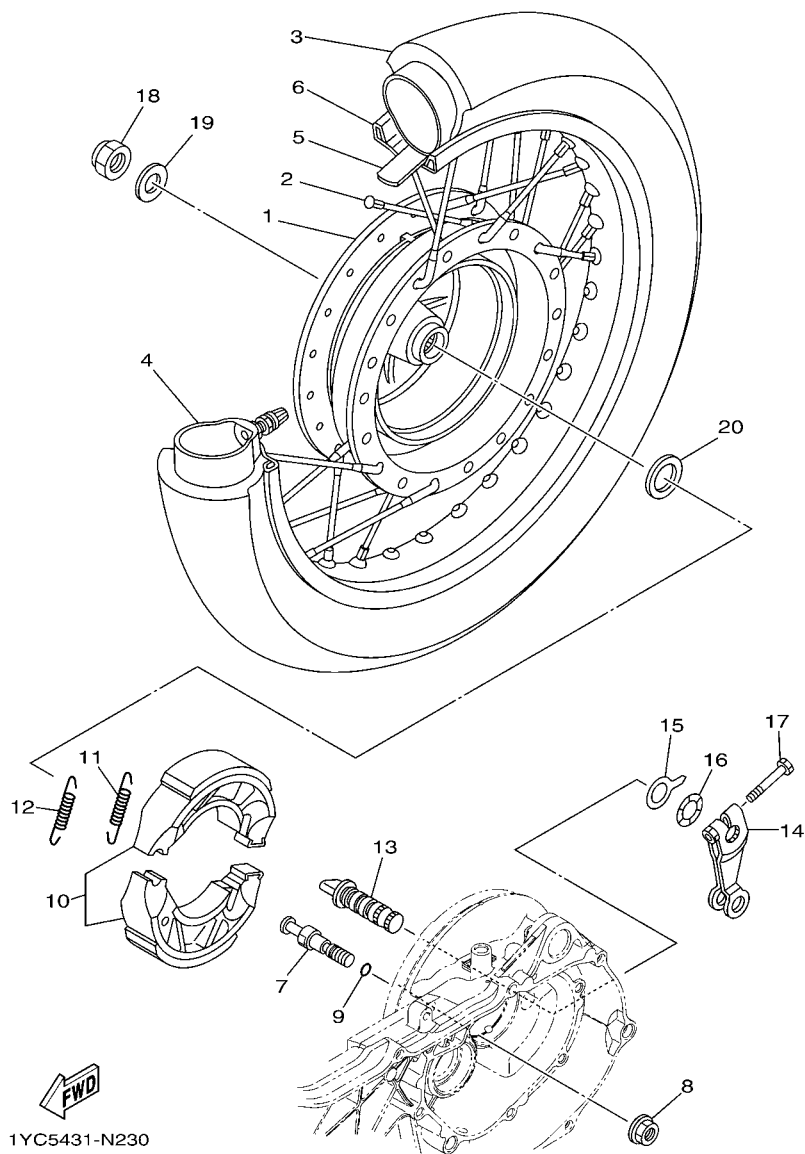


1YC4431-M220

FIG. 22 CALIBRE FRENO DELANTERA FRONT BRAKE CALIPER

REF. N°	CODIGO N° PART NO.	DESCRIPCION DESCRIPTION	B281				OBSERVACIONES REMARKS
1	54S-F582U-00	DISCO DE FRENO (DERECHO) DISK, BRAKE (RIGHT)	1				
2	90111-08853	TORNILLO BOLT, HEX. SOCKET BUTTON	3				
3	44S-F580U-01	CALIBRE COMPLETO (DERECHO) CALIPER ASSY (RIGHT)	1				
4	5P0-F5802-00	.PISTON COMPLETO PINZA .PISTON ASSY, CALIPER	1				
5	5YP-F5803-50	..JUEGO DE RETENES DE PINZA ..CALIPER SEAL KIT	1				
6	5YP-F5917-00	.FUNDA DE CALIBRE .BOOT, CALIPER	1				
7	5YP-F5937-00	.FUNDA .BOOT 2	1				
8	4C9-W0048-00	.CJTO TORNILLO DE PURGA .BLEED SCREW KIT	1				
9	3C1-F5805-10	.JUEGO DE COJIN DE FRENO .BRAKE PAD KIT	1				
10	5YP-F5925-01	.PRESILLA .CLIP	2				
11	5P0-F5919-00	.SOPORTE DE PASTILLAS .SUPPORT, PAD	1				
12	5YP-F5924-00	.PASADOR .PIN, PAD	1				
13	5YP-F5939-00	.PRESILLA .CLIP, PAD	1				
14	5P0-F5827-00	.CUNA DE CALIBRE .SHIM, CALIPER	2				
15	5D9-F5921-01	.MENSULA DE SOPORTE .SUPPORT ASSY	1				
16	90105-10831	TORNILLO BOLT, FLANGE	2				

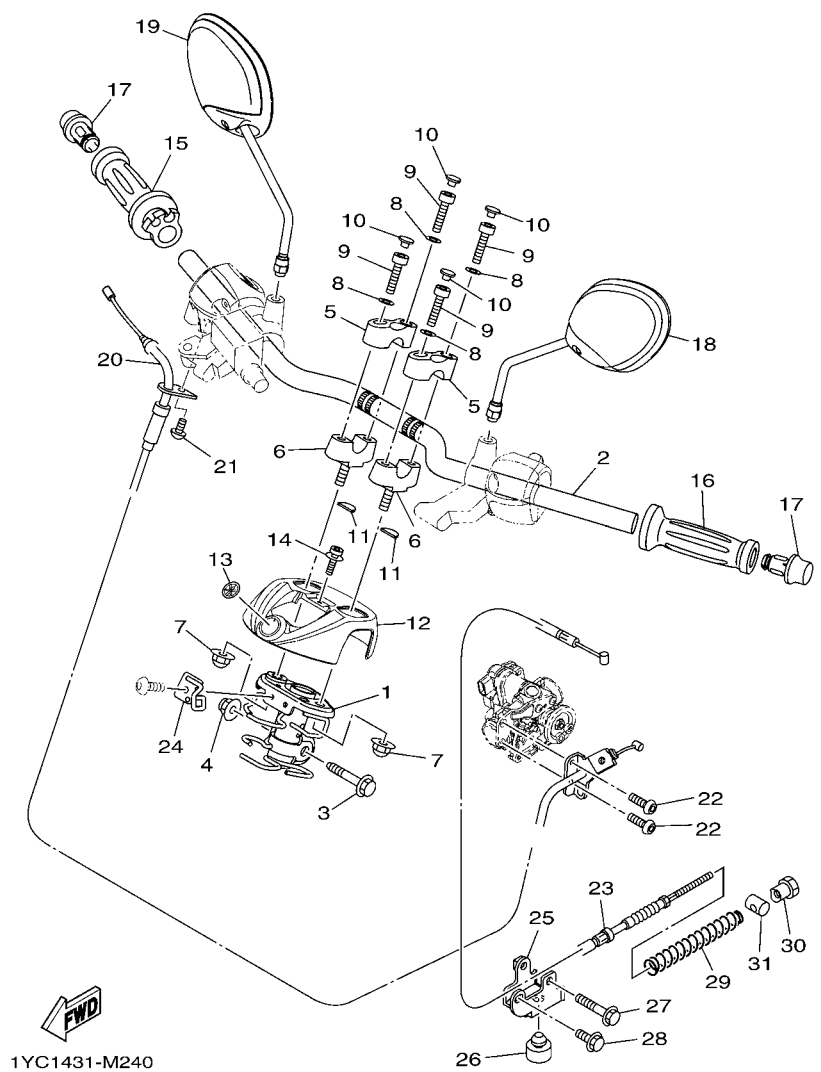
FIG. 23 REAR WHEEL FOR SPOKE WHEEL REAR WHEEL FOR SPOKE WHEEL



REF. Nº	CODIGO Nº PART NO.	DESCRIPCION DESCRIPTION	B281				OBSERVACIONES REMARKS
1	5VV-F5311-01	MASA TRASERA HUB, REAR (SL,0035)	1				
2	5VV-F5304-02	JUEGO DE RAYOS TRASEROS SPOKE SET, REAR	1				
3	94108-14810	TIRE (80/90-14M/C 46P NR76AE)	1				INOUE (IRC)
4	94208-14805	TUBO (80/90-14M/C)	1				INOUE (IRC)
5	94307-14801	BANDA DE ARO (22-14) BAND, RIM (22-14)	1				INOUE (IRC)
6	94416-14800	ARO (1.60-14) RIM (1.60-14)	1				INOUE (IRC)
7	1GC-F5326-00	PASADOR PIVOTE PIN, PIVOT	1				
8	95702-10500	TUERCA DE BRIDA NUT, FLANGE	1				
9	93210-07802	ANILLO O O-RING	1				
10	5LW-F530K-00	JUEGO DE ZAPATA DE FRENO BRAKE SHOE SET	1				
11	90506-12001	RESORTE DE TENSION SPRING, TENSION	1				
12	90506-15001	RESORTE DE TENSION SPRING, TENSION	1				
13	54P-F5351-00	ARBOL DE LEVAS CAMSHAFT	1				UR
	1P7-F5351-00	ARBOL DE LEVAS CAMSHAFT	1				UR
14	5LW-F5355-00	PALANCA DE ARBOL DE LEVAS LEVER, CAMSHAFT	1				UR
	1P7-F5355-00	PALANCA DE ARBOL DE LEVAS LEVER, CAMSHAFT	1				UR
15	5MY-F533A-00	PLACA INDICADOR PLATE, INDICATOR	1				UR
16	90206-14800	ARANDELA ONDULADA WASHER, WAVE	1				
17	90101-06046	TORNILLO BOLT	1				
18	90185-14814	TUERCA AUTOBLOCANTE NUT, SELF-LOCKING	1				
19	90201-14820	ARANDELA PLANA WASHER, PLATE	1				
20	90201-20276	ARANDELA, PLACA (T=1.0) WASHER, PLATE (T=1.0)	1				

FIG. 24 MANILLAR & CABLE

STEERING HANDLE & CABLE

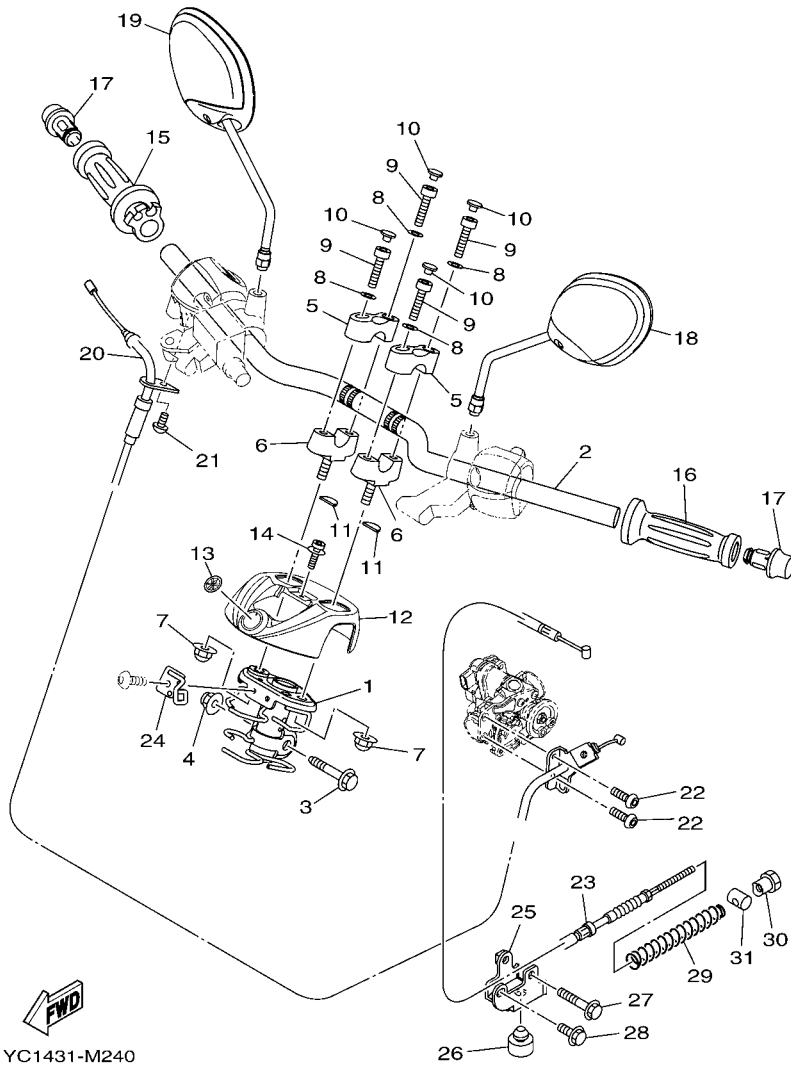


1YC1431-M240

REF. Nº	CODIGO Nº PART NO.	DESCRIPCION DESCRIPTION	B281			OBSERVACIONES REMARKS
1	1YC-F3461-00	SOPORTE DE MANUBRIO BRACKET, HANDLE	1			
2	1YC-F6112-00	MANUBRIO RECTO BAR, HANDLE	1			
3	90105-10864	TORNILLO BOLT, FLANGE	1			
4	90185-10815	TUERCA AUTOBLOCANTE NUT, SELF-LOCKING	1			
5	20B-F3441-10	SOPORTE DE MANUBRIO HOLDER, HANDLE UPPER	2			
6	20B-F3442-10	SOPORTE DE MANUBRIO INFERIOR HOLDER, HANDLE LOWER	2			
7	90185-10815	TUERCA AUTOBLOCANTE NUT, SELF-LOCKING	2			
8	90201-08823	ARANDELA PLANA WASHER, PLATE	4			
9	91312-08025	TORNILLO BOLT	4			
10	90338-06807	TAPON PLUG	4			
11	20B-F6113-00	AMORTIGUADOR DAMPER	2			
12	B28-F6143-00-P0	CUBIERTA DE MANUBRIO SUPERIOR1 COVER, HANDLE UPPER 1	1			SM1 SM1
13	4C9-F3108-00	EMBLEMA EMBLEM	1			
14	90159-05032	TORNILLO CON VALONA SCREW, WITH WASHER	1			
15	1YC-F6240-00	EMPUNADURA COMPLETA GRIP ASSY (BLACK)	1			PARA DRMK,VDOM1 FOR DRMK,VDOM1
15	1YC-F6240-10	EMPUNADURA COMPLETA GRIP ASSY (BROWN)	1			PARA WM6 FOR WM6
16	4D0-F6241-00	GRIP (BLACK)	1			PARA DRMK,VDOM1 FOR DRMK,VDOM1
16	1WC-F6241-00	EMPUNADURA GRIP (1346,DYN1)	1			PARA WM6 FOR WM6
17	1WC-F6246-00-P0	EXTREMO DE EMPUNADURA END, GRIP (0660,SM1)	2			SM1 SM1
18	1YC-F6280-B0	ESPEJO COMPLETO (IZQUIERDO) REAR VIEW MIRROR ASSY (1258)	1			UR PARA DRMK UR FOR DRMK
18	1YC-F6280-C0	ESPEJO COMPLETO (IZQUIERDO) REAR VIEW MIRROR ASSY (1124)	1			UR PARA WM6 UR FOR WM6
18	1YC-F6280-D0	ESPEJO COMPLETO (IZQUIERDO) REAR VIEW MIRROR ASSY (0858)	1			UR PARA VDOM1 UR FOR VDOM1
19	1YC-F6290-B0	ESPEJO COMPLETO (DERECHO) REAR VIEW MIRROR ASSY (1258)	1			UR PARA DRMK UR FOR DRMK
19	1YC-F6290-C0	ESPEJO COMPLETO (DERECHO) REAR VIEW MIRROR ASSY (1124)	1			UR PARA WM6 UR FOR WM6
19	1YC-F6290-D0	ESPEJO COMPLETO (DERECHO) REAR VIEW MIRROR ASSY (0858)	1			UR PARA VDOM1 UR FOR VDOM1
20	1YC-F6301-10	CABLE DE ACELERADOR COMPLETO THROTTLE CABLE ASSY	1			
21	92012-05016	PERNO BOLT, BUTTON HEAD	1			

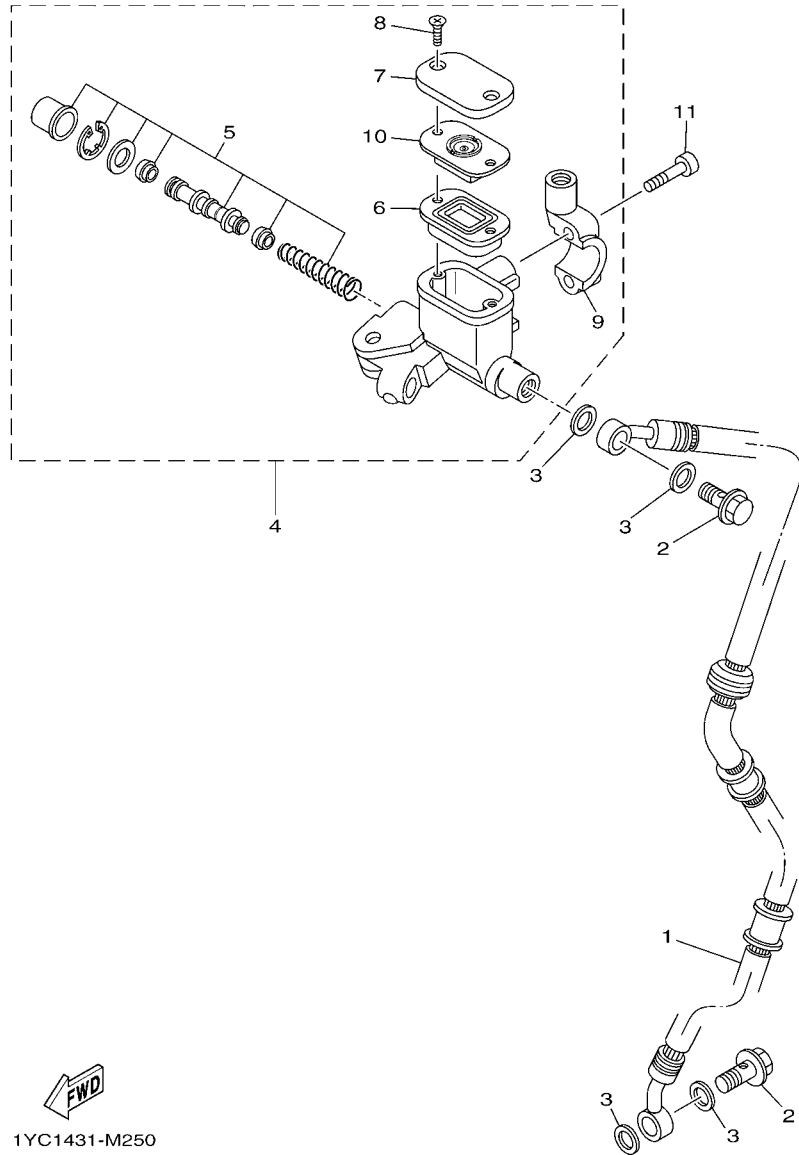
FIG. 24 MANILLAR & CABLE

STEERING HANDLE & CABLE



1YC1431-M240

REF. Nº	CODIGO Nº PART NO.	DESCRIPCION DESCRIPTION	B281				OBSERVACIONES REMARKS
22	92012-05010	PERNO BOLT, BUTTON HEAD	2				
23	1YC-F6351-10	CABLE DE FRENO CABLE, BRAKE	1				
24	1YC-F610C-00	WIRE GUIDE ASSY.,1 WIRE GUIDE ASSY.,1	1				
25	54S-F637G-00	SOSTEN, DE CABLE HOLDER, WIRE	1				
26	55G-F7114-00	TOPE DE PUNTAL PRINCIPAL STOPPER, MAIN STAND	1				
27	95022-06040	PERNO, DE BRIDA BOLT, FLANGE	1				
28	95022-06014	PERNO, DE BRIDA BOLT, FLANGE	1				
29	90501-16003	RESORTE DE COMPRESION SPRING, COMPRESSION	1				
30	90179-06835	TUERCA NUT	1				
31	90249-12008	PASADOR PIN	1				



1YC1431-M250

FIG. 25 CILINDRO MAESTRO DELANTERO FRONT MASTER CYLINDER

REF. N°	CODIGO N° PART NO.	DESCRIPCION DESCRIPTION	B281			OBSERVACIONES REMARKS
1	1YC-F5872-10	MANGUERA DE FRENO 1 HOSE, BRAKE 1	1			
2	90401-10823	PERNO DE UNION BOLT, UNION	2			
3	90201-10118	ARANDELA PLANA WASHER, PLATE	4			
4	1YC-F583T-00	CILINDRO MAESTRO COMPLETO MASTER CYLINDER ASSY (0035,SL)	1			
5	5P0-W0041-00	JUEGO DE CILINDRO MAESTRO CYLINDER KIT, MASTER	1			
6	5P0-F5854-00	EMPAQUE, DIAFRAGMA DIAPHRAGM, RESERVOIR	1			
7	20B-F5852-00	TAPA DE TANQUE DE RESERVA CAP, RESERVOIR (0035,SL)	1			
8	36Y-2589H-00	TORNILLO SCREW	2			
9	1YC-F5867-00	SOPORTE DE CILINDRO MAESTRO BRACKET, MASTER CYLINDER SILVER	1			
10	5P0-F5855-00	BUJE DE DIAFRAGMA BUSH, DIAPHRAGM	1			
11	95027-06025	PERNO, DE BRIDA BOLT, FLANGE	2			

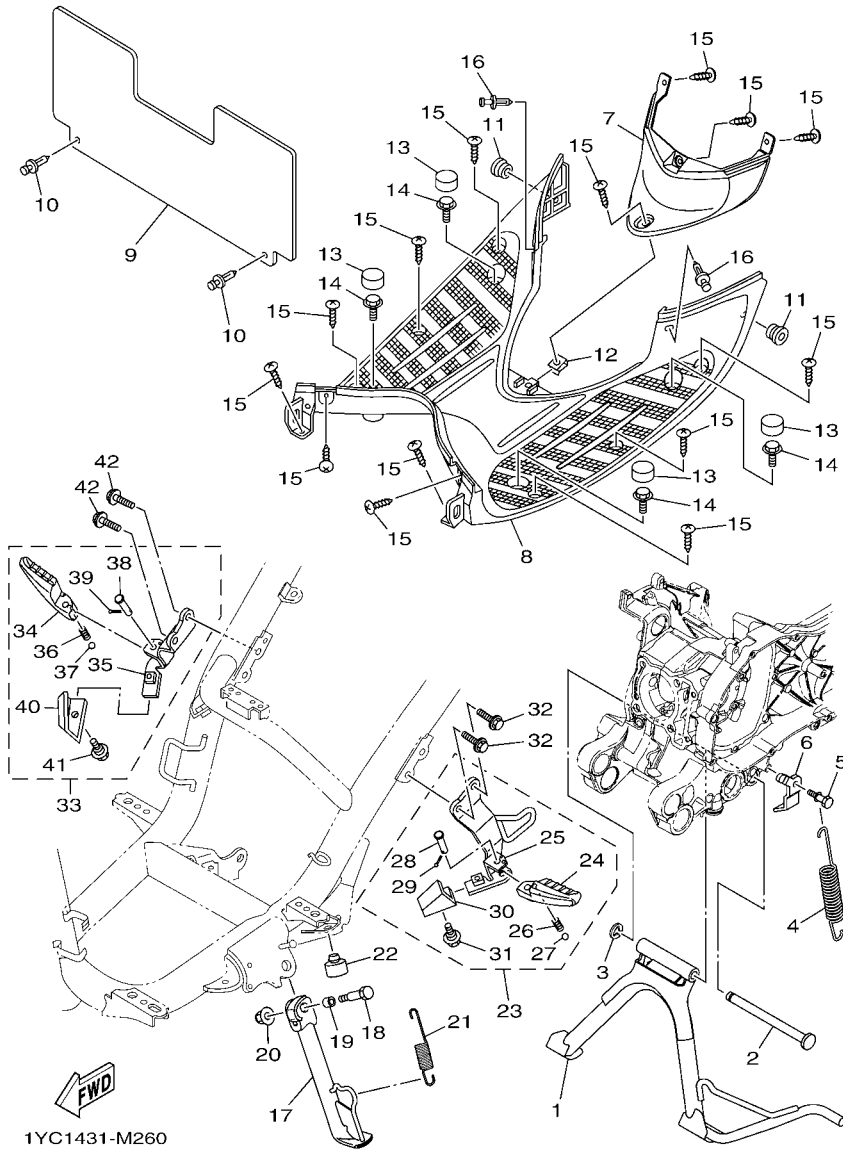


FIG. 26 SOPORTE & APOYAPIE

STAND & FOOTREST

REF. Nº	CODIGO Nº PART NO.	DESCRIPCION DESCRIPTION	B281		OBSERVACIONES REMARKS
1	B28-F7111-00	PUNTAL PRINCIPAL STAND, MAIN	1		
2	54S-F7112-00	EJE DE PUNTAL PRINCIPAL SHAFT, MAIN STAND	1		
3	93430-08810	SEGURO CIRCLIP	1		
4	90506-35821	RESORTE DE TENSION SPRING, TENSION	1		
5	5MY-F7254-00	GANCHO HOOK	1		
6	54S-F7267-00	GUÍA DE CABLE GUIDE, WIRE	1		
7	1YC-F7486-00	CUBIERTA 1 COVER 1	1		PARA DRMK,VDOM1 FOR DRMK,VDOM1
	1YC-F7486-10	CUBIERTA 1 COVER 1	1		PARA WM6 FOR WM6
8	1YC-F7481-00	TABLERO DE APOYAPIE BOARD, FOOTREST	1		PARA DRMK,VDOM1 FOR DRMK,VDOM1
	1YC-F7481-10	TABLERO DE APOYAPIE BOARD, FOOTREST	1		PARA WM6 FOR WM6
9	1YC-F7491-10	PROTECTOR PROTECTOR	1		
10	90269-06812	REMACHE RIVET	2		
11	90480-13867	TAPON GROMMET	2		
12	90183-05807	TUERCA DE RESORTE NUT, SPRING	1		
13	1YC-F7475-00	TAPA 1 CAP 1	4		PARA DRMK,VDOM1 FOR DRMK,VDOM1
	1YC-F7475-10	TAPA 1 CAP 1	4		PARA WM6 FOR WM6
14	90119-06137	TORNILLO CON ARANDELA BOLT, WITH WASHER	4		
15	97707-50012	TORNILLO SCREW, TRUSS HEAD TAPPING	14		
16	90269-06815	REMACHE RIVET	2		
17	B28-F7311-00	PUNTAL LATERAL STAND, SIDE	1		
18	90101-08847	TORNILLO BOLT	1		
19	90387-08820	ESPACIADOR COLLAR	1		
20	95602-08200	TUERCA DE AUTO-CIERRE NUT, SELF-LOCKING	1		
21	90506-20829	RESORTE DE TENSION SPRING, TENSION	1		
22	5VV-F7214-00	TOPE STOPPER	1		
23	1YC-F7430-00	APOYAPIE POSTERIOR COMPLETO 1 REAR FOOTREST ASSY 1	1		
24	4D0-F7431-00	.APOYAPIE POSTERIOR 1 .FOOTREST, REAR 1	1		

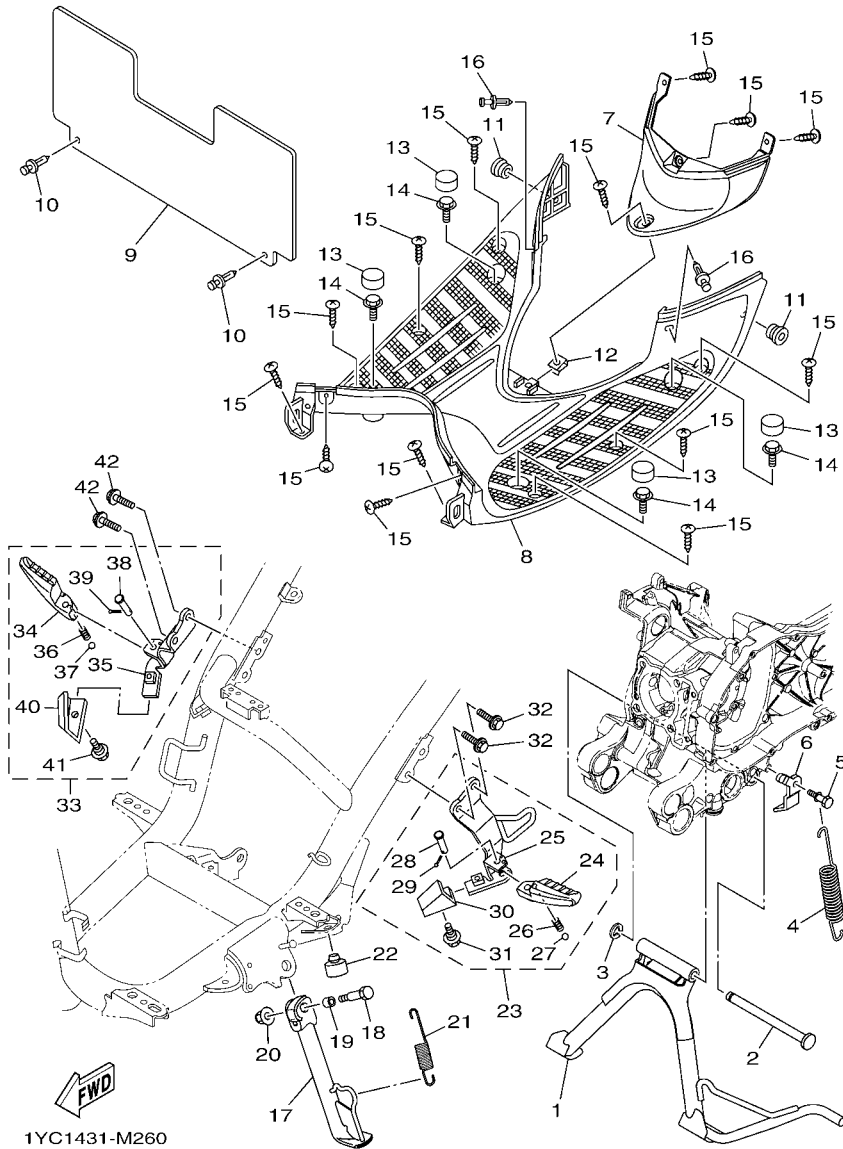


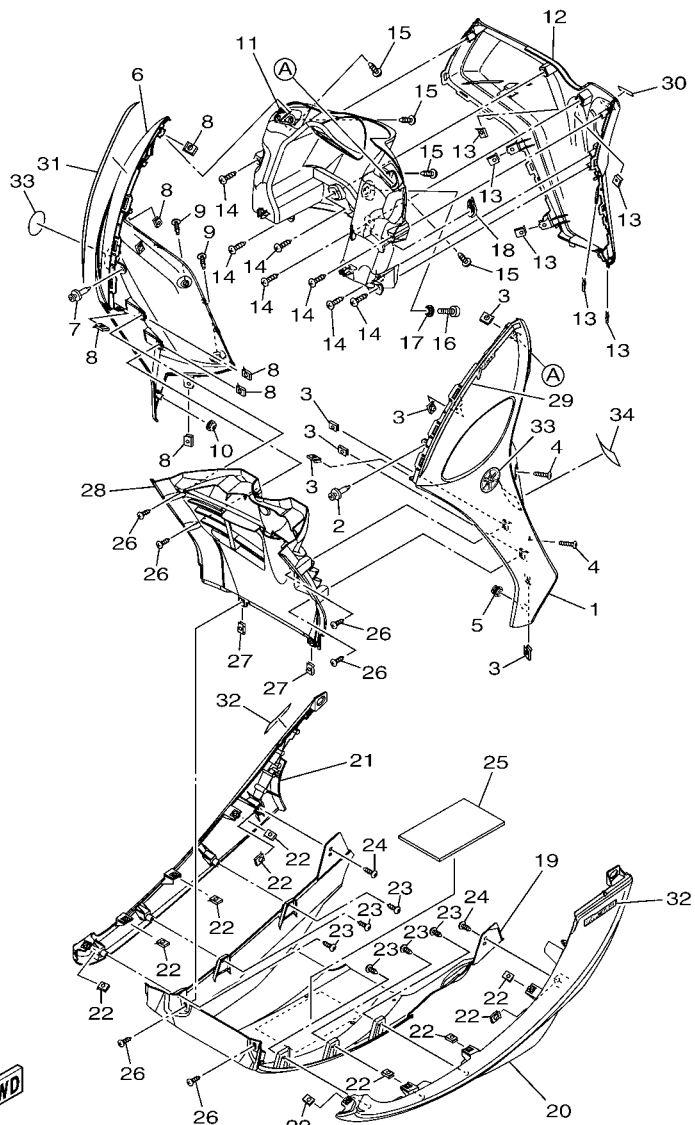
FIG. 26 SOPORTE & APOYAPIE

STAND & FOOTREST

REF. Nº	CODIGO Nº PART NO.	DESCRIPCION DESCRIPTION	B281				OBSERVACIONES REMARKS
25	1YC-F7432-00	.SOPORTE 1 .BRACKET 1	1				
26	90501-12743	.RESORTE DE COMPRESION .SPRING, COMPRESSION	1				
27	93501-04843	.BOLA .BALL	1				
28	91701-08035	.PASADOR DE ABRAZADERA .PIN	1				
29	91401-25015	.CHAVETA .PIN, COTTER	1				
30	1YC-F7453-00	.CUBIERTA APOYAPIE 1 .COVER 1	1				
31	90109-06202	.PERNO .BOLT	1				
32	95802-08030	TORNILLO DE REBORDE BOLT, FLANGE	2				
33	1YC-F7440-00	APOYAPIE POSTERIOR COMPLETO 2 REAR FOOTREST ASSY 2	1				
34	4D0-F7441-00	.APOYAPIE POSTERIOR 2 .FOOTREST, REAR 2	1				
35	1YC-F7442-00	.SOPORTE 2 .BRACKET 2	1				
36	90501-12743	.RESORTE DE COMPRESION .SPRING, COMPRESSION	1				
37	93501-04843	.BOLA .BALL	1				
38	91701-08035	.PASADOR DE ABRAZADERA .PIN	1				
39	91401-25015	.CHAVETA .PIN, COTTER	1				
40	1YC-F7463-00	.COJIN DE ASIENTO 2 .COVER 2	1				
41	90109-06202	.PERNO .BOLT	1				
42	95802-08030	TORNILLO DE REBORDE BOLT, FLANGE	2				

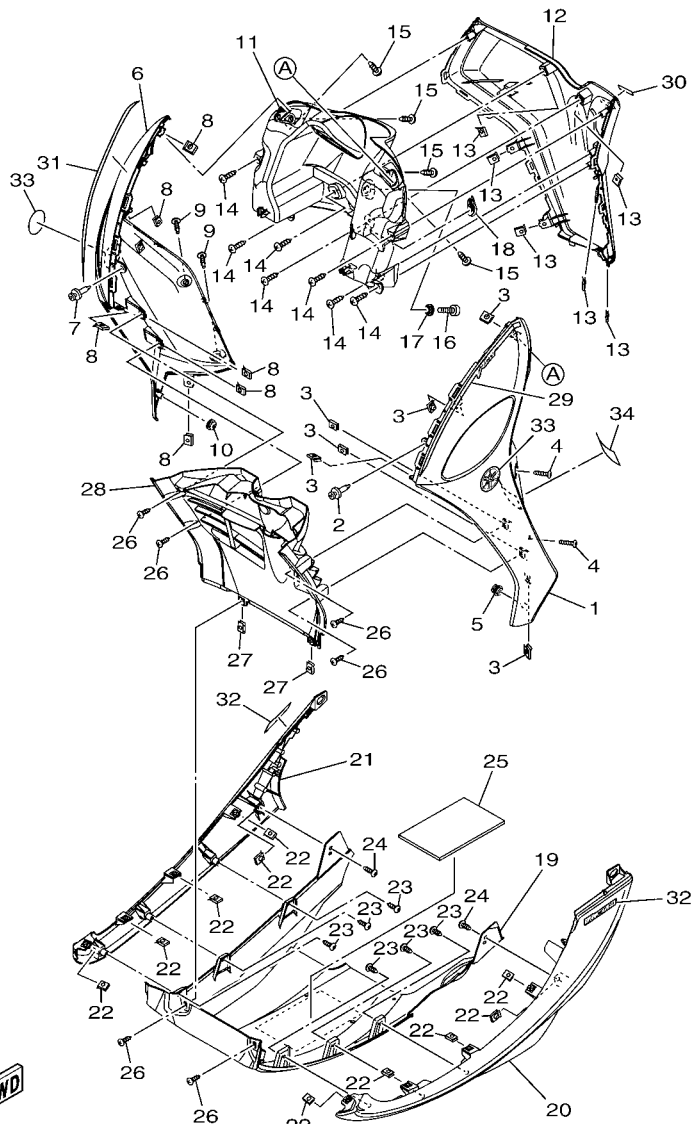
FIG. 27 PATA PROTEGIDA

LEG SHIELD



B281261-P270

REF. Nº	CODIGO Nº PART NO.	DESCRIPCION DESCRIPTION	B281			OBSERVACIONES REMARKS
1	B28-F8311-00-P0	PROTECCION DE PATA 1 LEG SHIELD 1	1			UR PARA DRMK UR FOR DRMK
	B28-F8311-00-P1	PROTECCION DE PATA 1 LEG SHIELD 1	1			UR PARA WM6 UR FOR WM6
	B28-F8311-00-P2	PROTECCION DE PATA 1 LEG SHIELD 1	1			UR PARA VDOM1 UR FOR VDOM1
2	90269-06812	REMACHE RIVET	1			
3	90183-05807	TUERCA DE RESORTE NUT, SPRING	6			
4	90160-05810	TORNILLO REDONDO ROSCA HEMBRA SCREW, ROUND TAPPING	2			
5	1YC-F8187-00	TAPON GROMMET	1			
6	B28-F8312-00-P0	PROTECCION DE PATA 2 LEG SHIELD 2	1			UR PARA DRMK UR FOR DRMK
	B28-F8312-00-P1	PROTECCION DE PATA 2 LEG SHIELD 2	1			UR PARA WM6 UR FOR WM6
	B28-F8312-00-P2	PROTECCION DE PATA 2 LEG SHIELD 2	1			UR PARA VDOM1 UR FOR VDOM1
7	90269-06812	REMACHE RIVET	1			
8	90183-05807	TUERCA DE RESORTE NUT, SPRING	6			
9	90160-05810	TORNILLO REDONDO ROSCA HEMBRA SCREW, ROUND TAPPING	2			
10	1YC-F8187-00	TAPON GROMMET	1			
11	B28-F836K-00-P0	PANEL 1 PANEL, INNER 1	1			MDRM3 PARA DRMK MDRM3 FOR DRMK
	B28-F836K-00-P1	PANEL 1 PANEL, INNER 1	1			PARA WM6 FOR WM6
	B28-F836K-00-WN	PANEL 1 PANEL, INNER 1	1			CIS PARA VDOM1 CIS FOR VDOM1
12	B28-F836L-00-7M	PANEL 2 PANEL, INNER 2	1			MDS PARA DRMK,WM6 MDS FOR DRMK,WM6
	B28-F836L-00-P1	PANEL 2 PANEL, INNER 2	1			LYNM9 PARA VDOM1 LYNM9 FOR VDOM1
13	90183-05807	TUERCA DE RESORTE NUT, SPRING	6			
14	97702-50016	TORNILLO ROSCA HEMBRA SCREW, TAPPING	7			
15	97702-50012	TORNILLO ROSCA HEMBRA SCREW, TAPPING	4			
16	98902-06012	TORNILLO DE LIGAR SCREW, BIND	1			
17	90387-07828	ESPACIADOR COLLAR	1			
18	1YC-F8349-00	TAPA CAP	1			
19	1YC-F8385-00	CUBIERTA INFERIOR COVER, UNDER	1			
20	B28-F8395-00-P0	CUBIERTA INFERIOR COVER, UNDER 2	1			MDRM3 PARA DRMK MDRM3 FOR DRMK



B281261-P270

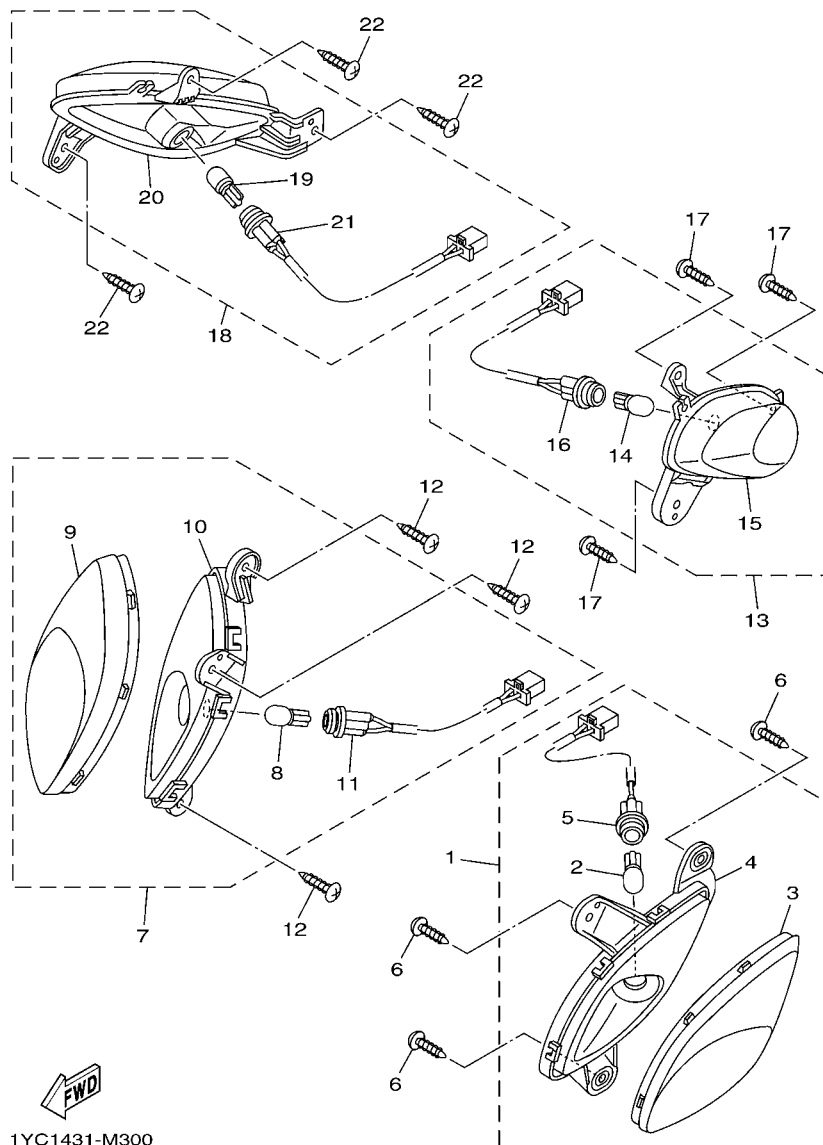
FIG. 27 PATA PROTEGIDA

LEG SHIELD

REF. Nº	CODIGO Nº PART NO.	DESCRIPCION DESCRIPTION	B281			OBSERVACIONES REMARKS
20	B28-F8395-00-7M	CUBIERTA INFERIOR COVER, UNDER 2	1			MDS PARA WM6 MDS FOR WM6
	B28-F8395-00-WN	CUBIERTA INFERIOR COVER, UNDER 2	1			CIS PARA VDOM1 CIS FOR VDOM1
21	B28-F837D-00-P0	CUBIERTA INFERIOR 3 COVER, UNDER 3	1			MDRM3 PARA DRMK MDRM3 FOR DRMK
	B28-F837D-00-7M	CUBIERTA INFERIOR 3 COVER, UNDER 3	1			MDS PARA WM6 MDS FOR WM6
	B28-F837D-00-WN	CUBIERTA INFERIOR 3 COVER, UNDER 3	1			CIS PARA VDOM1 CIS FOR VDOM1
22	90183-05807	TUERCA DE RESORTE NUT, SPRING	10			
23	97702-50012	TORNILLO ROSCA HEMBRA SCREW, TAPPING	6			
24	90160-05810	TORNILLO REDONDO ROSCA HEMBRA SCREW, ROUND TAPPING	2			
25	90520-03813	EQUILIBRIO, CUBIERTA DAMPER, PLATE	1			
26	97702-50012	TORNILLO ROSCA HEMBRA SCREW, TAPPING	6			
27	90183-05807	TUERCA DE RESORTE NUT, SPRING	2			
28	1YC-F1552-00	GUARDABARRO FENDER, INNER	1			
29	1YC-F83BL-00	GRAFICO 36 GRAPHIC 36	1			UR PARA DRMK UR FOR DRMK
	1YC-F83BL-10	GRAFICO 36 GRAPHIC 36	1			UR PARA WM6 UR FOR WM6
	1YC-F83BL-20	GRAFICO 36 GRAPHIC 36	1			UR PARA VDOM1 UR FOR VDOM1
30	1YC-F8328-00	EMBLEMA EMBLEM	1			UR PARA DRMK UR FOR DRMK
	1YC-F8328-10	EMBLEMA EMBLEM	1			UR PARA WM6 UR FOR WM6
	1YC-F8328-20	EMBLEMA EMBLEM	1			UR PARA VDOM1 UR FOR VDOM1
31	1YC-F83BM-00	GRAFICO 37 GRAPHIC 37	1			UR PARA DRMK UR FOR DRMK
	1YC-F83BM-10	GRAFICO 37 GRAPHIC 37	1			UR PARA WM6 UR FOR WM6
	1YC-F83BM-20	GRAFICO 37 GRAPHIC 37	1			UR PARA VDOM1 UR FOR VDOM1
32	1YC-F839G-10	CALCOMANIA GRAPHIC 10	2			UR PARA DRMK UR FOR DRMK
	1YC-F839G-20	CALCOMANIA GRAPHIC 10	2			UR PARA WM6 UR FOR WM6
	1YC-F839G-30	CALCOMANIA GRAPHIC 10	2			UR PARA VDOM1 UR FOR VDOM1
33	1WC-F175C-00	MARCA TUNING FORK MARK	2			
34	2BN-F1568-00	ETIQUETA DE PRECAUCION LABEL, WARNING	1			

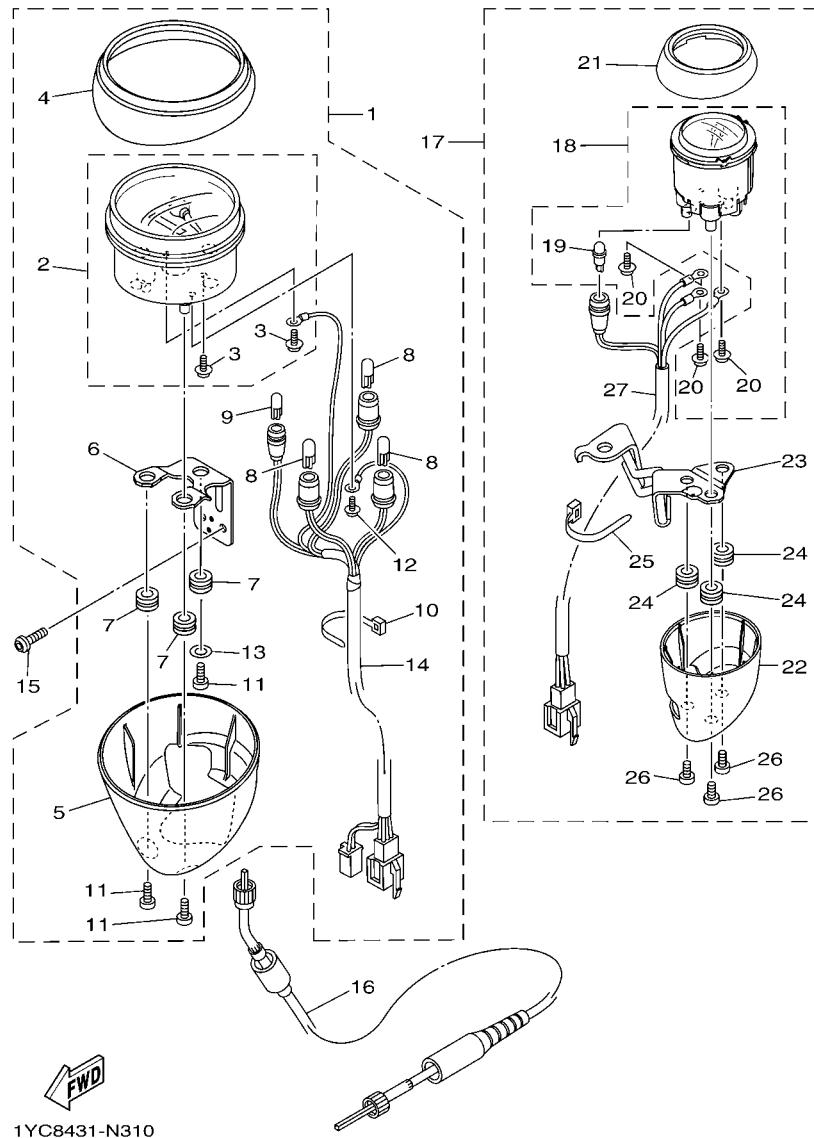
FIG. 30 LUZ DE DESTELLADOR

FLASHER LIGHT



1YC1431-M300

REF. Nº	CODIGO Nº PART NO.	DESCRIPCION DESCRIPTION	B281			OBSERVACIONES REMARKS
1	1YC-H3310-00	DESTELLADOR DE LUZ DELANT. FRONT FLASHER LIGHT ASSY 1	1			
2	1YC-H3311-00	.BOMBILLA (12V-WY10W) .BULB, FLASHER (12V-WY10W)	1			
3	1YC-H3312-10	.LENTE DE DESTELLADOR .LENS, FLASHER	1			
4	1YC-H3314-10	.BASE DE RELE .BASE, FLASHER 1 (BLACK)	1			
5	1YC-H355H-00	.ENCASTRE COMPLETO .SOCKET CORD ASSY.,1	1			
6	97702-50012	TORNILLO ROSCA HEMBRA SCREW, TAPPING	3			
7	1YC-H3320-00	DESTELLADOR DE LUZ DELANT. FRONT FLASHER LIGHT ASSY 2	1			
8	1YC-H3311-00	.BOMBILLA (12V-WY10W) .BULB, FLASHER (12V-WY10W)	1			
9	1YC-H3322-10	.LENTE DE INTERMITENTE 2 .LENS, FLASHER 2	1			
10	1YC-H3324-10	.BASE INTERMITENTE 2 .BASE, FLASHER 2 (BLACK)	1			
11	1YC-H355J-00	.ENCASTRE COMPLETO .SOCKET CORD ASSY.,2	1			
12	97702-50012	TORNILLO ROSCA HEMBRA SCREW, TAPPING	3			
13	1YC-H3330-00	DESTELLADOR DE LUZ TRAS.COMPL. REAR FLASHER LIGHT ASSY 1	1			
14	1YC-H3311-00	.BOMBILLA (12V-WY10W) .BULB, FLASHER (12V-WY10W)	1			
15	1YC-WH333-00	.LENS FLASHER KIT REAR 1 .LENS FLASHER KIT REAR 1	1			
16	1YC-H331E-00	.CORDÓN COMPLETO .CORD ASSY	1			
17	97702-50016	TORNILLO ROSCA HEMBRA SCREW, TAPPING	3			
18	1YC-H3340-00	DESTELLADOR DE LUZ TRAS.COMPL. REAR FLASHER LIGHT ASSY 2	1			
19	1YC-H3311-00	.BOMBILLA (12V-WY10W) .BULB, FLASHER (12V-WY10W)	1			
20	1YC-WH334-00	.JUEGO DE LENDE DE DESTELLADOR .LENS FLASHER KIT REAR 2	1			
21	1YC-H332E-00	.CABLE COMPL. .CORD ASSY	1			
22	97702-50016	TORNILLO ROSCA HEMBRA SCREW, TAPPING	3			

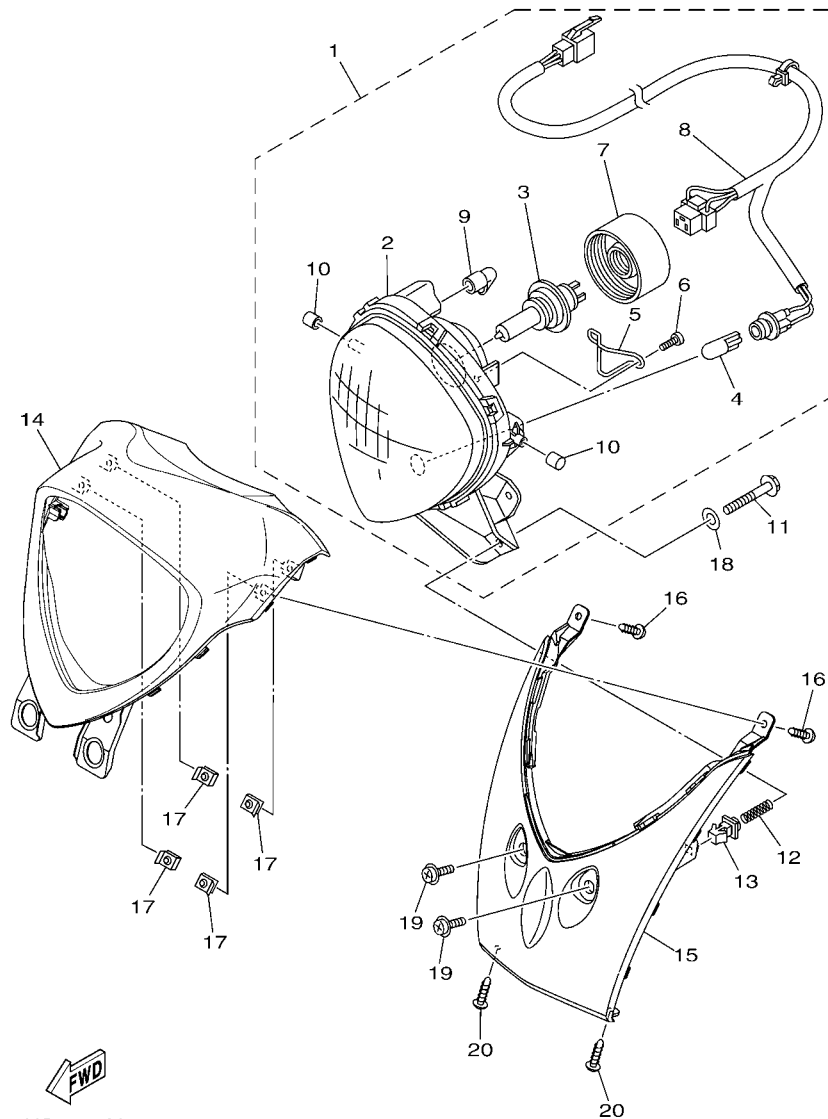


1YC8431-N310

FIG. 31 MEDIDOR

METER

REF. Nº	CODIGO Nº PART NO.	DESCRIPCION DESCRIPTION	B281			OBSERVACIONES REMARKS
1	1YC-H3570-90	VELOCIMETRO COMPLETO SPEEDOMETER ASSY (CROME/1258)	1			UR PARA DRMK UR FOR DRMK
	1YC-H3570-A0	VELOCIMETRO COMPLETO SPEEDOMETER ASSY (CROME/0919)	1			UR PARA WM6 UR FOR WM6
	1YC-H3570-B0	VELOCIMETRO COMPLETO SPEEDOMETER ASSY (CROME/0858)	1			UR PARA VDOM1 UR FOR VDOM1
2	1YC-H351A-40	.MEDIDOR COMPLETA .SPEEDO. COMP.	1			
3	97602-04310	..TORNILLO CON RONDONA ..SCREW, PAN HEAD WITH WASHER	2			
4	1YC-H353E-A0	.CAJA DE MEDIDOR SUPERIOR .CASE, METER UPPER (CROME)	1			
5	1YC-H3572-40	.CAJA DE VELOCIMETRO INFERIOR .CASE, SPEEDOMETER LOWER(MDRM3)	1			UR PARA DRMK UR FOR DRMK
	1YC-H3572-50	.CAJA DE VELOCIMETRO INFERIOR .CASE, SPEEDOMETER LOWER(DBNM8)	1			UR PARA WM6 UR FOR WM6
	1YC-H3572-60	.CAJA DE VELOCIMETRO INFERIOR .CASE, SPEEDOMETER LOWER(VDOM1)	1			UR PARA VDOM1 UR FOR VDOM1
6	1YC-H355Y-00	.SOSTEN 2 .BRACKET, METER 2	1			
7	20B-H338V-00	.AMORTIGUADOR .DAMPER	3			
8	44D-H3517-00	.AMPOLLETA (12V-1.7W T10) .BULB (12V-1.7W T10)	3			
9	2GV-H3517-00	.BOMBILLA (T-6.5 12V-1.7W) .BULB (T-6.5 12V-1.7W)	1			
10	20B-H357E-00	.GRAMPA .CLAMP	1			
11	20B-H4526-00	.TORNILLO .SCREW	3			
12	97602-03110	..TORNILLO CON RONDONA ..SCREW, PAN HEAD WITH WASHER	1			
13	5BP-H3524-00	.ARANDELA ESPECIAL .WASHER, SPECIAL	1			
14	1YC-H3520-10	.ENCASTRE COMPLETO .SOCKET CORD ASSY	1			
15	90149-06845	TORNILLO DE REGLAJE SCREW	2			
16	1YC-H3550-00	CABLE DE VELOCIMETRO COMPLETO SPEEDOMETER CABLE ASSY	1			
17	1YC-H5750-90	MEDIDOR DE COMBUSTIBLE COMPL. FUEL METER ASSY (CROME/1258)	1			UR PARA DRMK UR FOR DRMK
	1YC-H5750-A0	MEDIDOR DE COMBUSTIBLE COMPL. FUEL METER ASSY (CROME/0919)	1			UR PARA WM6 UR FOR WM6
	1YC-H5750-B0	MEDIDOR DE COMBUSTIBLE COMPL. FUEL METER ASSY (CROME/0858)	1			UR PARA VDOM1 UR FOR VDOM1
18	1YC-H350A-40	.MEDIDOR COMPLETA .METER COMP.	1			
19	20B-H3751-00	..AMPOLLETA ..BULB, LED	1			
20	90159-03102	..TORNILLO CON VALONA ..SCREW, WITH WASHER	3			
21	1YC-H360M-A0	.CASE COMP, UPPER 2(CROME) .CASE COMP, UPPER 2(CROME)	1			



1YC1431-M320

FIG. 32 FARO DELANTERO

HEADLIGHT

REF. N°	CODIGO N° PART NO.	DESCRIPCION DESCRIPTION	B281			OBSERVACIONES REMARKS
1	1YC-H4310-00	UNIDAD DE FARO DELANTERO COMPL HEADLIGHT UNIT ASSY	1			
2	1YC-H4103-00	.UNIDAD FARO DELANTERO COMPLETO .HEADLIGHT UNIT ASSY	1			
3	1PA-H4314-00	.BOMBILLA (12V-35/35W) .BULB, HEADLIGHT (12V-35/35W)	1			
4	5YP-H5353-00	.AMPOLLETA (12V-5W) .BULB (12V-5W)	1			
5	1YC-H4124-00	.JUEGO DE RESORTES .SPRING, SUPPORT	1			
6	5B9-H4192-00	.TORNILLO, ESPECIAL .SCREW, SPECIAL	1			
7	1YC-H4397-00	.CUBIERTA DE ENCASTRE .COVER, SOCKET	1			
8	1YC-H4340-00	.ENCASTRE DE CABLE COMPLETO .SOCKET CORD ASSY 1	1			
9	1YC-H411V-00	.TUBO .TUBE ASSY	1			
10	4D0-H4345-00	.AMORT DE FARO DELANTERO .DAMPER, HEADLIGHT	2			
11	1YC-H4331-00	TORNILLO DE AJUSTE DE ARO SCREW, RIM ADJUSTING	1			
12	4D0-H4332-00	RESORTE DE TORNILLO SPRING, SCREW	1			
13	4D0-H4334-00	TUERCA DE AJUSTE NUT, ADJUSTING	1			
14	1YC-H4144-10	CUBIERTA FARO DELANTERO COVER, HEADLIGHT (0903,SMX)	1			UR PARA DRMK UR FOR DRMK
	1YC-H4144-00	CUBIERTA FARO DELANTERO COVER, HEADLIGHT (CR)	1			UR PARA WM6,VDOM1 UR FOR WM6,VDOM1
15	1YC-H4369-10	CUBIERTA 1 COVER, FRONT (0752,LYNM9)	1			UR PARA DRMK UR FOR DRMK
	1YC-H4369-70	CUBIERTA 1 COVER, FRONT (007M,MDS)	1			UR PARA WM6,VDOM1 UR FOR WM6,VDOM1
16	97702-50012	TORNILLO ROSCA HEMBRA SCREW, TAPPING	2			
17	90183-05807	TUERCA DE RESORTE NUT, SPRING	4			
18	4D0-F8483-00	PLACA 1 PLATE, RUBBER 1	1			
19	90159-06860	TORNILLO CON VALONA SCREW, WITH WASHER	2			
20	97702-50012	TORNILLO ROSCA HEMBRA SCREW, TAPPING	2			

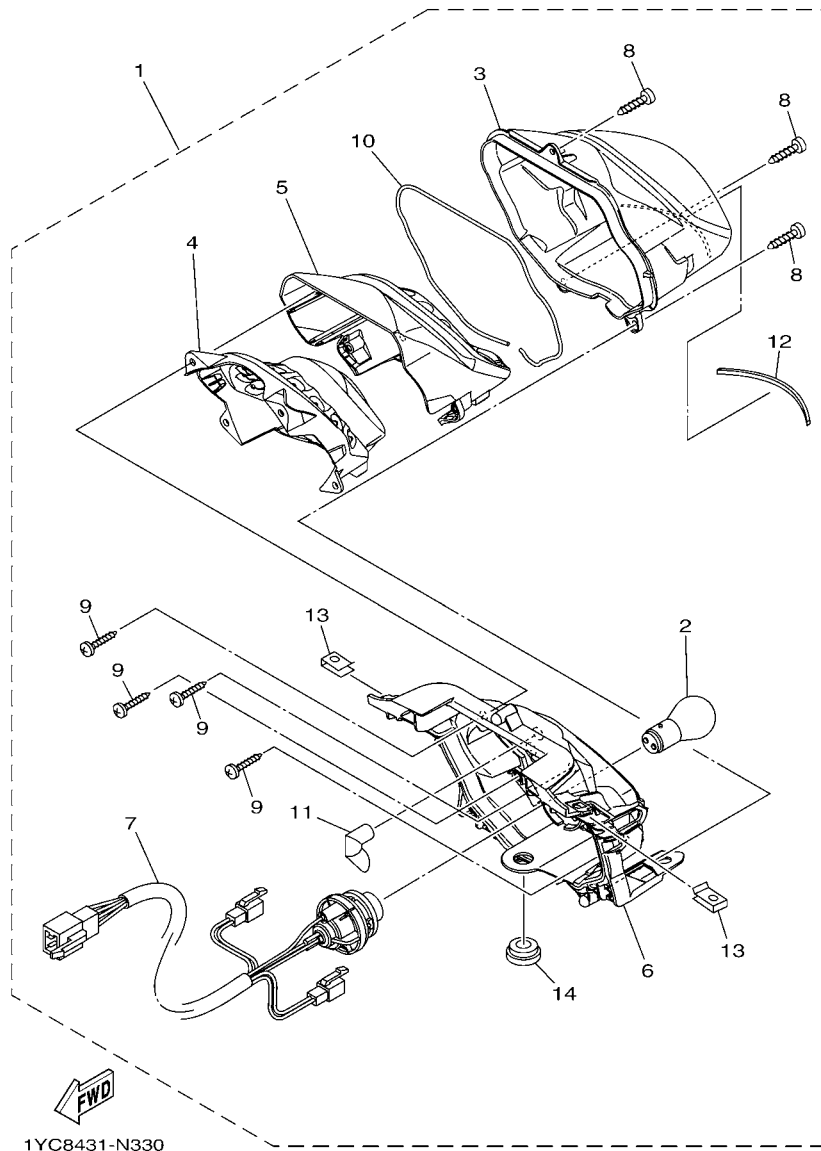
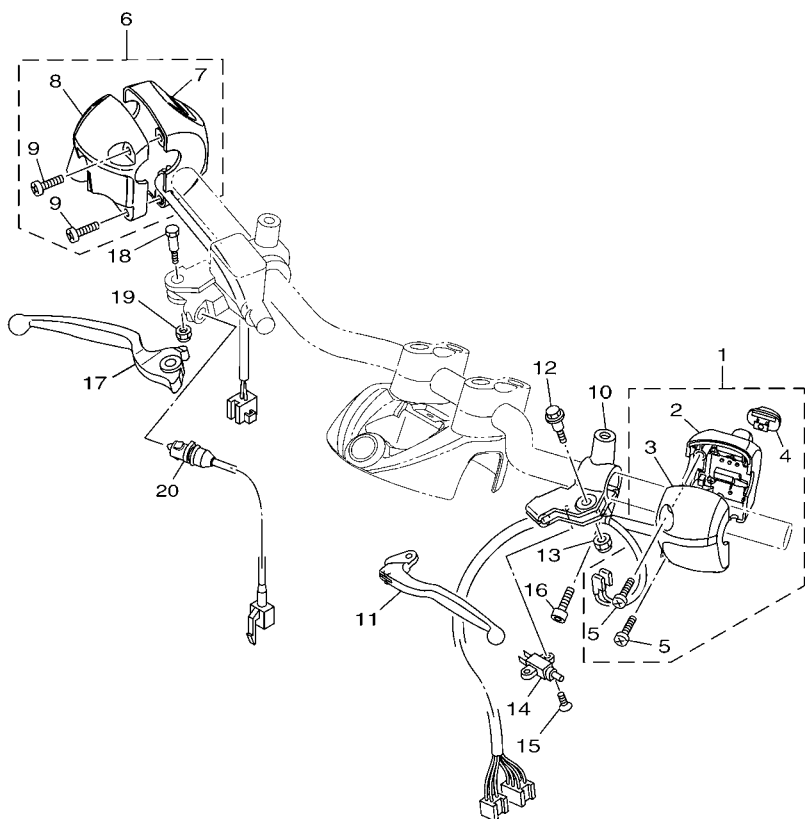


FIG. 33 LUZ DE COLA

TAILLIGHT

REF. N°	CODIGO N° PART NO.	DESCRIPCION DESCRIPTION	B281				OBSERVACIONES REMARKS
1	1YC-H4710-00	UNIDAD FARO TRASERO COMPL. TAIL LIGHT UNIT ASSY (CR)	1				
2	1YC-H4714-00	.BOMBILLA (12V-21/5W) BULB, TAIL LIGHT (12V-21/5W)	1				
3	1YC-H4540-00	.LENTE COMPLETO LENS ASSY	1				
4	1YC-H4721-00	.LENTE DE FARO TRASERO LENS, TAILLIGHT	1				
5	1YC-H4516-00	.CUBIERTA DE LUZ DE COLA COVER, TAILLIGHT (CROME)	1				
6	1YC-H4711-00	.BASE DE FARO TRASERO BASE, TAILLIGHT	1				
7	1YC-H4735-00	.CABLE COMPLETA SOCKET CORD ASSY	2				
8	97702-40616	.TORNILLO ROSCA HEMBRA SCREW, TAPPING	3				
9	97707-40116	.TORNILLO ROSCA HEMBRA SCREW, TAPPING	4				
10	1YC-H4723-00	.EMPAQUE LENTE FARO TRASERO GASKET, TAIL LENS	1				
11	1PN-H411V-00	.TAPA PIPE AIRVENT	1				
12	4D0-F8372-00	.AMORTIGUADOR DAMPER	1				
13	90183-05807	.TUERCA DE RESORTE NUT, SPRING	2				
14	90480-13867	.TAPON GROMMET	1				

FIG. 34 INTERRUPTOR DE MANILLAR&PALANC SWITCH & LEVER FOR DISK BRAKE

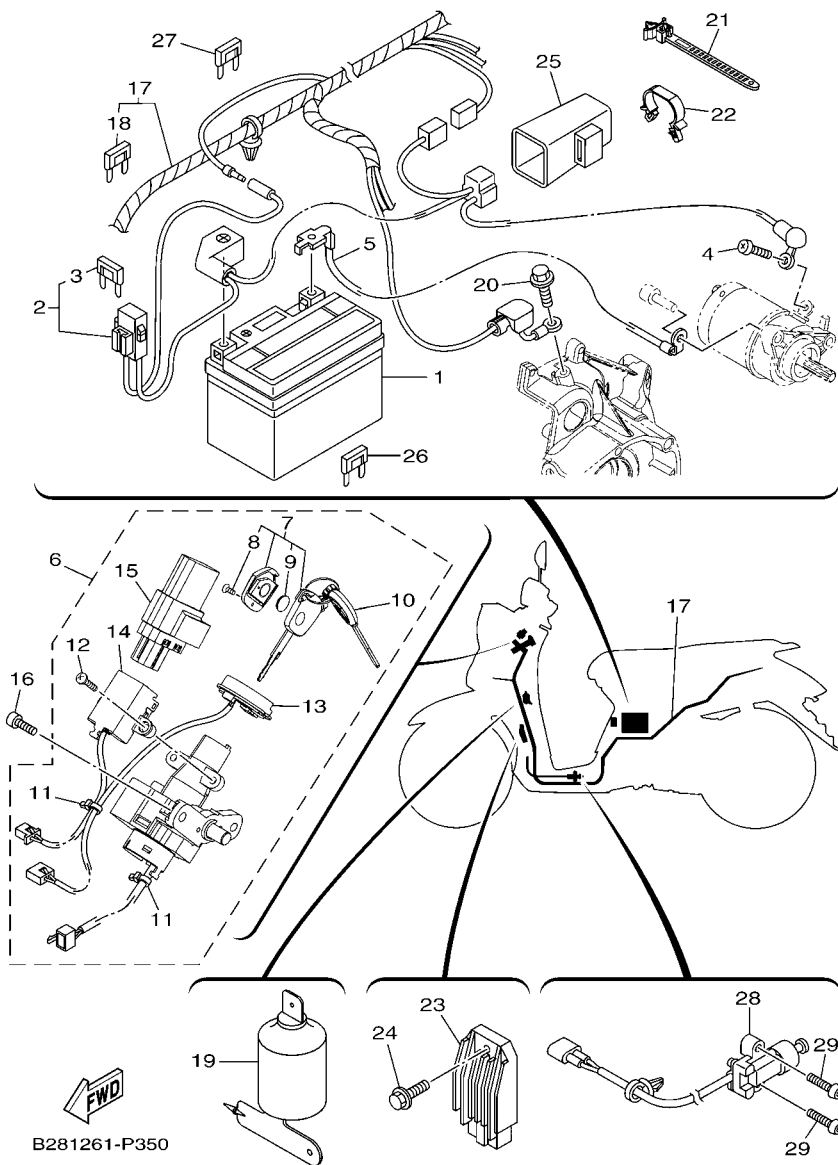


1YC1431-M340

REF. Nº	CODIGO Nº PART NO.	DESCRIPCION DESCRIPTION	B281				OBSERVACIONES REMARKS
1	1YC-H3973-30	SWITCH, HANDLE 3 (0660,SM1)	1				
2	1YC-H3986-00	.CAJA DE INTERRUPTOR SUPERIOR .CASE, SWITCH UPPER (0660,SM1)	1				
3	1YC-H3987-00	.CAJA DE INTERRUPTOR INFERIOR .CASE, SWITCH LOWER (0660,SM1)	1				
4	1YC-H3977-00	.INTERUPTOR .KNOB 1	1				
5	9760M-05225	.TORNILLO CAB CON PLANA C/ARAN .SCREW, PAN HEAD WITH WASHER	2				
6	1YC-H3976-30	INTERRUPTOR DE MANIJA 1 SWITCH, HANDLE 1 (0660,SM1)	1				
7	1YC-H3985-00	.CAJA INTERRUPTOR SUPERIOR .CASE, SWITCH UPPER (0660)	1				
8	1YC-H3988-00	.CAJA INTERRUPTOR INFERIOR .CASE, SWITCH LOWER (0660)	1				
9	9760M-05225	.TORNILLO CAB CON PLANA C/ARAN .SCREW, PAN HEAD WITH WASHER	2				
10	1YC-H2911-00	SOPORTE DE LEVA 1 HOLDER, LEVER 1 (SILVER)	1				
11	5TL-H3912-00	PALANCA 1 LEVER 1 (SILVER)	1				
12	90109-06889	PERNO BOLT	1				
13	95602-06100	TUERCA U NUT, U	1				
14	5TL-H3980-02	INTERRUP. DE PARADA DELANTERO FRONT STOP SWITCH ASSY	1				
15	98702-03008	TORNILLO CON CABEZA PLANA SCREW, FLAT HEAD	1				
16	91312-06020	TORNILLO BOLT	1				
17	5VV-H3922-00	PALANCA 2 LEVER 2 (SILVER)	1				
18	90109-06255	PERNO BOLT	1				
19	95602-06100	TUERCA U NUT, U	1				
20	1YC-H3980-00	INTERRUP. DE PARADA DELANTERO FRONT STOP SWITCH ASSY	1				

FIG. 35 EQUIPO ELECTRICO 1

ELECTRICAL 1

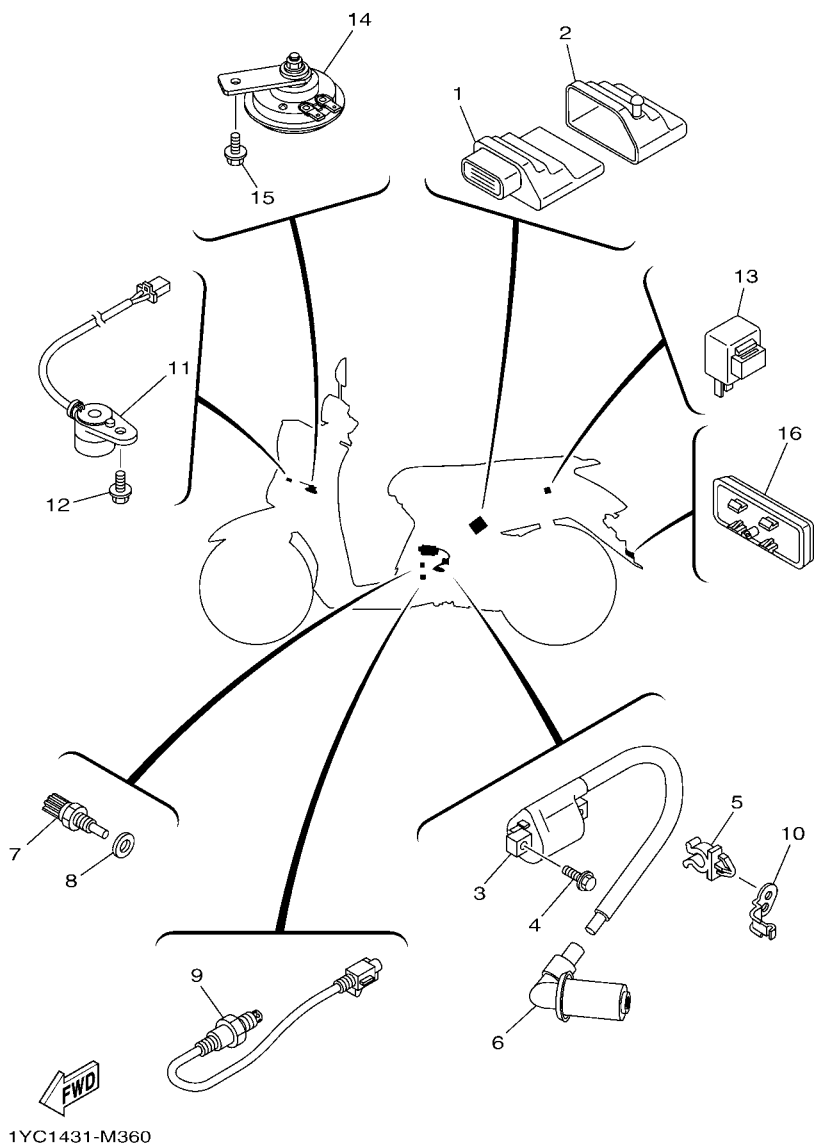


B281261-P350

REF. Nº	CODIGO Nº PART NO.	DESCRIPCION DESCRIPTION	B281			OBSERVACIONES REMARKS
1	54S-H2100-00	BATERIA COMPLETA BATTERY ASSY (GS GTZ4V)	1			
2	1YC-H2115-00	CABLE CONDUCTOR POSITIVO WIRE, PLUS LEAD	1			
3	54S-H2151-00	.FUSIBLE (15A) .FUSE (15A)	1			
4	98902-05008	TORNILLO DE LIGAR SCREW, BIND	1			
5	54S-H2116-00	CABLE CONDUCTOR NEGATIVO WIRE, MINUS LEAD	1			
6	1YC-H252E-10	INTERRUPTOR PRINC. COMPLETO MAIN SWITCH COMP.	1			
7	1YC-H6261-01	.XMTR. COMP. .XMTR. COMP.	1			
8	1YC-H2113-00	..TORNILLO ..SCREW	1			
9	1YC-HA6S0-00	..BATERIA ..BATTERY	1			
10	2EP-H2511-00	..LLAVE EN BLANCO ..BLANK KEY	1			
11	1YC-H1128-00	.GRAMPA .CLAMP	2			
12	1YC-H1513-00	.TORNILLO .SCREW	2			
13	1YC-H2500-10	.OBTURADOR 2 .SHUTTER 2	1			
14	1YC-H6111-10	.CONJUNTO BOBINA SOLENOIDE .COIL, SOLENOID	1			
15	1YC-H6265-01	.RECEPTOR .RECEIVER COMPLETE	1			
16	91312-06014	TORNILLO BOLT	2			
17	1YC-H2590-10	CONJUNTO DE CABLES WIRE HARNESS ASSY	1			
18	1PN-H2151-00	.FUSIBLE (10A) .FUSE (10A)	1			
19	1YC-H2599-20	CUBIERTA DE CONECTOR COVER, CONNECTER	1			
20	95022-06012	PERNO, DE BRIDA BOLT, FLANGE	1			
21	90464-12810	BRIDA CLAMP	1			
22	90464-24230	BRIDA CLAMP	1			
23	1GS-H1960-00	RECTIFICADOR Y REGULADOR RECTIFIER & REGULATOR ASSY	1			
24	90105-068A0	TORNILLO BOLT, FLANGE	1			
25	5TN-H1940-00	CONJUNTO ARRANCADOR RELEVO STARTER RELAY ASSY	1			
26	54S-H2151-00	FUSIBLE (15A) FUSE (15A)	1			
27	1PN-H2151-00	FUSIBLE (10A) FUSE (10A)	1			

FIG. 36 EQUIPO ELECTRICO 2

ELECTRICAL 2



REF. Nº	CODIGO Nº PART NO.	DESCRIPCION DESCRIPTION	B281				OBSERVACIONES REMARKS
1	54S-H591A-03	UNIDAD CONTROL ENGINE CONTROL UNIT ASSY	1				
2	54S-H5546-00	BANDA BAND	1				
3	54S-H2310-00	BOBINA DE ENCENDIDO COMPLETA IGNITION COIL ASSY	1				
4	95022-06020	PERNO, DE BRIDA BOLT, FLANGE	2				
5	90464-14808	BRIDA CLAMP	1				
6	54S-H2370-00	TAPON DE BUJIA COMPLT PLUG CAP ASSY	1				
7	52B-H3591-00	UNIDAD TERMOSTATO THERMO UNIT	1				
8	90430-10804	JUNTA GASKET	1				
9	54S-H592A-01	SENSOR SENSOR, OXYGEN	1				
10	54S-H1328-00	GRAMPA CLAMP	1				
11	1YC-H3383-00	ZUMBADOR BUZZER	1				
12	95802-06012	TORNILLO DE REBORDE BOLT, FLANGE	1				
13	4C9-H3350-10	RELE DE DESTELLADOR COMPL. FLASHER RELAY ASSY	1				
14	1YC-H3371-00	BOCINA HORN	1				
15	95802-06012	TORNILLO DE REBORDE BOLT, FLANGE	1				
16	5P0-H5130-00	REFLECTOR TRASERO COMPLETO REAR REFLECTOR ASSY	1				

INDICE NUMERICO
NUMERICAL INDEX

CODIGO Nº PART NO.	REF. Nº	CODIGO Nº PART NO.	REF. Nº	CODIGO Nº PART NO.	REF. Nº	CODIGO Nº PART NO.	REF. Nº	CODIGO Nº PART NO.	REF. Nº	CODIGO Nº PART NO.	REF. Nº
1AA-12118-00	3 - 5	54S-E2651-00	6 - 1	1YC-E4458-00	7 - 49	54S-E6523-00	12 - 18	2BN-F1668-00	20 - 26	28D-F3170-00	18 - 9
36Y-2589H-00	25 - 8	54S-E2652-00	6 - 3	54S-E4610-04	8 - 1	54S-E6611-00	12 - 31	B28-F1711-00-7M	16 - 4	278-F3181-50	18 - 13
54S-E111F-00	4 - 5	54S-E2658-00	6 - 2	4D0-E4613-00	8 - 7	54S-E6620-00	12 - 13	B28-F1711-00-P0	16 - 4	4D0-F3340-00	18 - 16
54S-E1133-10	1 - 6	54S-E2659-00	6 - 6	1YC-E4718-00	8 - 2	54S-E6623-00	12 - 15	B28-F1711-00-WN	16 - 4	4D0-F3346-00	18 - 18
54S-E1162-00	1 - 21	1GC-E2662-00	3 - 11	1YC-E4728-00	8 - 3	4D0-E6626-00	12 - 17	B28-F171E-00-7M	16 - 20	1YC-F334G-00	18 - 21
54S-E1165-00	1 - 8	5P0-E2662-00	3 - 11	54S-E5111-00	9 - 2	54S-E6629-00	12 - 16	B28-F171E-00-P1	16 - 20	156-F3411-00	18 - 17
54P-E1166-00	7 - 45	54S-E2668-00	6 - 7	54S-E5113-00	9 - 22	54S-E6631-00	12 - 14	B28-F1721-00-7M	16 - 8		18 - 28
54S-E1166-00	7 - 45	5P0-E3300-00	5 - 1	54S-E5121-00	9 - 3	54S-E6819-00	12 - 19	B28-F1721-00-P0	16 - 8	50P-F3411-00	18 - 30
54S-E1169-00	1 - 9	4D0-E3324-00	2 - 11	54S-E5150-00	9 - 1	54S-E7155-00	13 - 8	B28-F1721-00-WN	16 - 8	50P-F3412-00	18 - 27
54S-E1173-00	1 - 12	54S-E3411-00	5 - 5	54S-E5191-00	10 - 7	54S-E7211-00	13 - 5	B28-F172W-00-7M	16 - 1	50P-F3412-10	18 - 25
1YC-E1181-00	1 - 16	5VD-E3452-00	2 - 10	54S-E5316-00	10 - 11	54S-E7410-00	13 - 1	B28-F172W-00-P1	16 - 1	5VV-F3416-00	18 - 31
54S-E1191-00	1 - 7	54S-E3474-00	7 - 16	54P-E5351-00	5 - 4	54S-E7421-00	13 - 4	B28-F1731-00-P0	16 - 12	50P-F341E-00	18 - 29
1YC-E1193-00	1 - 13	5VV-E3475-00	5 - 2	1YC-E5362-00	9 - 23	54S-E7465-00	12 - 22	B28-F1731-00-P1	16 - 12	50P-F341E-10	18 - 26
4YS-E1198-00	9 - 17	54S-E3556-00	7 - 3	5VV-E5363-00	9 - 20	54S-E7465-10	12 - 23	B28-F1731-00-P2	16 - 12	20B-F3441-10	24 - 5
54S-E1311-00	1 - 20	1YC-E3557-00	7 - 14	54S-E5371-00	9 - 9	54S-E7471-00	12 - 2	1YC-F173B-20	16 - 28	20B-F3442-10	24 - 6
1YC-E1351-00	1 - 22	5VV-E3569-00	6 - 13		10 - 3	54S-E7611-00	12 - 12	B28-F1741-00-P0	16 - 16	1YC-F3461-00	24 - 1
1YC-E1400-01	2 - 1	54S-E3575-00	7 - 43	54S-E5373-00	9 - 10	54S-E7620-00	12 - 7	B28-F1741-00-P1	16 - 16	B28-F4110-00	19 - 1
54S-E1412-00	2 - 2	1VB-E3585-00	7 - 1	54S-E5383-00	10 - 9	54S-E7623-00	12 - 9	B28-F1741-00-P2	16 - 16	1YC-F414A-10	19 - 12
54S-E1422-00	2 - 9	54S-E3593-00	7 - 5	54S-E5407-00	10 - 22	54S-E7632-00	12 - 8	1YC-F174B-20	16 - 29	54S-F414G-00	19 - 9
54S-E1445-00	2 - 17	54S-E3595-00	7 - 2	4D0-E5408-00	9 - 11	54P-E7641-00	12 - 32	1WC-F175C-00	27 - 33	54S-F419F-00	19 - 4
52B-E1549-00	2 - 3	54S-E3750-10	7 - 17	54S-E5408-00	10 - 17	54S-E7641-00	12 - 32	1YC-F17AK-00	16 - 26	54S-F4491-00	19 - 10
54P-E1603-00	2 - 16	54P-E3761-10	7 - 9	54S-E5411-00	10 - 1	1GC-E7645-00	12 - 33	1YC-F17AK-10	16 - 26	54S-F4610-00	19 - 13
54P-E1630-00	2 - 13	5VV-E3769-00	9 - 24	54S-E5413-00	10 - 25	33S-E7645-00	12 - 33	1YC-F17AK-20	16 - 26	1YC-F4704-00	20 - 4
54S-E1633-00	2 - 14	54P-E3770-10	7 - 8	54S-E5417-00	9 - 25	54S-E7649-01	12 - 39	1YC-F17AL-00	16 - 27	54S-F4726-00	20 - 15
1YC-E1650-00	2 - 6	54S-E3815-00	7 - 25	54S-E5421-00	9 - 38	54S-E7653-00	12 - 10	1YC-F17AL-10	16 - 27	5VV-F4727-00	20 - 14
54S-E1681-00	2 - 7	54S-E3892-00	7 - 23	54S-E5423-00	9 - 32	54S-E7660-00	12 - 20	1YC-F17AL-20	16 - 27	1YC-F4730-60	20 - 1
54S-E2111-00	3 - 1	54S-E3895-00	7 - 24	1YC-E5451-00	10 - 2	54S-E7664-00	12 - 24	1GS-F1978-00	20 - 25	1YC-F4730-70	20 - 1
1GC-E2113-00	3 - 4	54P-E3907-11	19 - 6	1YC-E5453-00	9 - 28	54S-E7668-00	12 - 27	54S-F2141-00	14 - 11	2JK-F4741-00	20 - 2
54P-E2113-00	3 - 4	54P-E3915-00	19 - 7	1YC-E5461-00	9 - 39	54S-E7670-00	12 - 21	1YC-F2210-00	17 - 1	33S-F4741-00	20 - 3
1GC-E2117-00	3 - 6	54P-E3938-00	7 - 12	54S-E5471-00	10 - 18	54S-E7674-00	12 - 11	4D1-F2216-00	9 - 7	5YP-F4768-00	20 - 19
54S-E2117-00	3 - 6	54S-E3971-00	19 - 3	52B-E5472-00	10 - 20	54S-E7678-00	12 - 28	1YC-F3100-00	18 - 1	1YC-F4773-00-P1	20 - 22
54S-E2119-00	3 - 3	54P-E4137-00	7 - 13	54S-E5473-00	10 - 16	54S-E7678-10	12 - 30	4C9-F3108-00	24 - 13	1YC-F4773-00-P6	20 - 22
54S-E2121-00	3 - 2	54S-E4146-00	7 - 28	54S-E5495-00	10 - 21	54S-E7683-00	12 - 25	54P-F3110-10	18 - 8	1YC-F4773-00-P7	20 - 22
5P0-E2126-00	3 - 7	54P-E4147-00	7 - 10	52B-E5512-00	11 - 6	54S-E7684-00	12 - 26	1FC-F3111-10	18 - 19	5P0-F4780-01	20 - 17
1GC-E2146-00	3 - 12	5CA-E4147-00	7 - 11	5P0-E5521-00	11 - 7	B28-F1110-00	14 - 1	54S-F3126-00	18 - 5	1YC-F478E-00	20 - 20
54S-E2146-00	3 - 12	54P-E416A-00	7 - 21	52B-E5524-00	11 - 1	1YC-F1161-00	18 - 36	54S-F3136-00	18 - 2	5VV-F5104-00	21 - 5
54P-E2151-00	3 - 8	54P-E4243-00	7 - 19	18S-E5570-00	11 - 4	B28-F1410-00	14 - 2	54P-F3141-10	18 - 15	54S-F5111-00-35	21 - 1
33S-E2159-01	3 - 10	54P-E4335-00	7 - 22	52B-E5570-00	11 - 4	54S-F1459-01	14 - 9	5LM-F3144-00	18 - 14	3NA-F5181-01	21 - 11
54S-E2170-00	4 - 1	54S-E4411-00	7 - 29	33S-E5598-00	11 - 5	B28-F1511-00-P0	15 - 1	3AY-F3145-00	18 - 3	5VV-F5190-01	21 - 14
33S-E2176-00	4 - 7	54S-E4412-00	7 - 30	5TL-E5601-00	11 - 8	B28-F1511-00-P1	15 - 1		18 - 6	5VV-F5304-02	23 - 2
5MX-E2210-00	4 - 13	54S-E442F-00	7 - 48	1KP-E5620-00	11 - 14	B28-F1511-00-P2	15 - 1	2JG-F3147-00	18 - 20	5LW-F530K-00	23 - 10
1YC-E2213-00	4 - 15	54S-E4437-00	7 - 31	5VV-E5630-00	11 - 16	1YC-F153E-00	16 - 30	5D9-F3152-00	18 - 11	5VV-F5311-01	23 - 1
5MX-E2222-00	4 - 14	5P0-E443E-00	10 - 4	1P7-E5657-00	12 - 36	1YC-F153E-20	16 - 30	5P0-F3153-00	18 - 23	1GC-F5326-00	23 - 7
52B-E2228-00	4 - 17	5VV-E443E-00	7 - 38	5VV-E5659-00	10 - 6	1YC-F153E-40	16 - 30	5P0-F3156-00	18 - 4	5MY-F533A-00	23 - 15
1YC-E2231-00	4 - 9	5TN-E443G-00	7 - 35	5VV-E5673-00	11 - 17	1YC-F1552-00	27 - 28		18 - 7	1P7-F5351-00	23 - 13
33S-E2233-00	4 - 10	54S-E4450-00	7 - 32	33S-E5693-00	11 - 2	2BN-F1568-00	27 - 34	2JG-F3157-00	18 - 10	54P-F5351-00	23 - 13
1YC-E2241-00	4 - 12	54S-E4452-00	7 - 34	54S-E5744-00	12 - 29	1YC-F1611-00	15 - 4	2BU-F3158-00	18 - 12	1P7-F5355-00	23 - 14
54S-E2611-00	6 - 10	54S-E4453-00	7 - 33	54S-E6111-00	12 - 1	54S-F1621-00	15 - 8	4D0-F3165-00	18 - 22	5LW-F5355-00	23 - 14

INDICE NUMERICO
NUMERICAL INDEX

CODIGO Nº PART NO.	REF. Nº	CODIGO Nº PART NO.	REF. Nº	CODIGO Nº PART NO.	REF. Nº	CODIGO Nº PART NO.	REF. Nº	CODIGO Nº PART NO.	REF. Nº	CODIGO Nº PART NO.	REF. Nº
5P0-F5802-00	22 - 4	1YC-F7430-00	26 - 23	1YC-F83BL-00	27 - 29	1YC-H3324-10	30 - 10	1PN-H411V-00	33 - 11	90105-068A0	35 - 24
5YP-F5803-50	22 - 5	4D0-F7431-00	26 - 24	1YC-F83BL-10	27 - 29	1YC-H332E-00	30 - 21	1YC-H411V-00	32 - 9	90105-068A5	7 - 6
3C1-F5805-10	22 - 9	1YC-F7432-00	26 - 25	1YC-F83BL-20	27 - 29	1YC-H3330-00	30 - 13	1YC-H4124-00	32 - 5	90105-068A6	7 - 7
44S-F580U-01	22 - 3	1YC-F7440-00	26 - 33	1YC-F83BM-00	27 - 31	1YC-H3340-00	30 - 18	1YC-H4144-00	32 - 14	90105-08861	17 - 2
5P0-F5827-00	22 - 14	4D0-F7441-00	26 - 34	1YC-F83BM-10	27 - 31	4C9-H3350-10	36 - 13	1YC-H4144-10	32 - 14	90105-088E1	4 - 6
54S-F582U-00	22 - 1	1YC-F7442-00	26 - 35	1YC-F83BM-20	27 - 31	1YC-H3371-00	36 - 14	5B9-H4192-00	32 - 6	90105-088E3	14 - 7
1YC-F583T-00	25 - 4	1YC-F7453-00	26 - 30	4D0-F8483-00	32 - 18	1YC-H3383-00	36 - 11	1YC-H4310-00	32 - 1	90105-10283	14 - 3
20B-F5852-00	25 - 7	1YC-F7463-00	26 - 40	1YC-H1128-00	35 - 11	20B-H338V-00	31 - 7	1PA-H4314-00	32 - 3	90105-10831	22 - 16
5P0-F5854-00	25 - 6	1YC-F7475-00	26 - 13	54S-H1328-00	36 - 10		31 - 24	1YC-H4331-00	32 - 11	90105-10864	24 - 3
5P0-F5855-00	25 - 10	1YC-F7475-10	26 - 13	54S-H132G-00	28 - 5	1YC-H350A-40	31 - 18	4D0-H4332-00	32 - 12	90109-06202	15 - 2
1YC-F5867-00	25 - 9	1YC-F7481-00	26 - 8	54S-H1410-01	28 - 2	4D0-H4330-10	31 - 27	4D0-H4334-00	32 - 13		15 - 5
1YC-F5872-10	25 - 1	1YC-F7481-10	26 - 8	54S-H1450-00	28 - 1	2GV-H3517-00	31 - 9	1YC-H4340-00	32 - 8		20 - 7
4D0-F5875-00	18 - 33	1YC-F7486-00	26 - 7	1YC-H1513-00	35 - 12	44D-H3517-00	31 - 8	4D0-H4345-00	32 - 10		26 - 31
54S-F5876-00	18 - 34	1YC-F7486-10	26 - 7	5TP-H1801-00	29 - 2	1YC-H351A-40	31 - 2	1YC-H4369-10	32 - 15		26 - 41
5YP-F5917-00	22 - 6	1YC-F7491-10	26 - 9	5D9-H1828-00	29 - 4	1YC-H3520-10	31 - 14	1YC-H4369-70	32 - 15	90109-06255	34 - 18
5P0-F5919-00	22 - 11	1YC-F8100-00	20 - 27	5D9-H1861-00	29 - 3	5BP-H3524-00	31 - 13	1YC-H4397-00	32 - 7	90109-06889	34 - 12
5D9-F5921-01	22 - 15	2SE-H1815R-00	7 - 42	54S-H1890-02	29 - 1	1YC-H353E-A0	31 - 4	1YC-H4516-00	33 - 5	90110-10831	1 - 19
5YP-F5924-00	22 - 12	1YC-F8187-00	16 - 5	5TN-H1940-00	35 - 25	1YC-H353H-40	31 - 22	20B-H4526-00	31 - 11	90111-05810	35 - 29
5YP-F5925-01	22 - 10		16 - 9	1GS-H1960-00	35 - 23	1YC-H353H-50	31 - 22		31 - 26	90111-06811	8 - 6
5YP-F5937-00	22 - 7		27 - 5	54S-H2100-00	35 - 1	1YC-H353H-60	31 - 22	1YC-H4540-00	33 - 3	90111-08853	22 - 2
5YP-F5939-00	22 - 13		27 - 10	1YC-H2113-00	35 - 8	1YC-H354B-00	31 - 23	1YC-H4710-00	33 - 1	90116-08843	9 - 15
1YC-F610C-00	24 - 24	B28-F8311-00-P0	27 - 1	1YC-H2115-00	35 - 2	1YC-H3550-00	31 - 16	1YC-H4711-00	33 - 6	90119-06137	19 - 2
1YC-F6112-00	24 - 2	B28-F8311-00-P1	27 - 1	54S-H2116-00	35 - 5	1YC-H355H-00	30 - 5	1YC-H4714-00	33 - 2		26 - 14
20B-F6113-00	24 - 11	B28-F8311-00-P2	27 - 1	54S-H2129-00	20 - 11	1YC-H355J-00	30 - 11	1YC-H4721-00	33 - 4	90149-05801	1 - 10
B28-F6143-00-P0	24 - 12	B28-F8312-00-P0	27 - 6	1PN-H2151-00	35 - 18	1YC-H355Y-00	31 - 6	1YC-H4723-00	33 - 10	90149-06845	31 - 15
1YC-F6240-00	24 - 15	B28-F8312-00-P1	27 - 6		35 - 27	1YC-H3570-90	31 - 1	1YC-H4735-00	33 - 7	90151-06811	10 - 10
1YC-F6240-10	24 - 15	B28-F8312-00-P2	27 - 6	54S-H2151-00	35 - 3	1YC-H3570-A0	31 - 1	5P0-H5130-00	36 - 16	90159-03102	31 - 20
1WC-F6241-00	24 - 16	1YC-F8328-00	27 - 30		35 - 26	1YC-H3570-B0	31 - 1	5YP-H5353-00	32 - 4	90159-05032	24 - 14
4D0-F6241-00	24 - 16	1YC-F8328-10	27 - 30	54S-H2176-00	20 - 5	1YC-H3572-40	31 - 5	54S-H5546-00	36 - 2	90159-06801	15 - 3
1WC-F6246-00-P0	24 - 17	1YC-F8328-20	27 - 30	54S-H2310-00	36 - 3	1YC-H3572-50	31 - 5	1YC-H5750-90	31 - 17	90159-06860	32 - 19
1YC-F6280-B0	24 - 18	1YC-F8349-00	27 - 18	54S-H2370-00	36 - 6	1YC-H3572-60	31 - 5	1YC-H5750-A0	31 - 17	90160-05810	27 - 4
1YC-F6280-C0	24 - 18	1YC-F8356-10	14 - 13	1YC-H2500-10	35 - 13	20B-H357E-00	31 - 10	1YC-H5750-B0	31 - 17		27 - 9
1YC-F6280-D0	24 - 18	B28-F836K-00-P0	27 - 11	2EP-H2511-00	35 - 10		31 - 25	54P-H5752-00	19 - 8		27 - 24
1YC-F6290-B0	24 - 19	B28-F836K-00-P1	27 - 11	1YC-H252E-10	35 - 6	52B-H3591-00	36 - 7	54P-H5801-00	7 - 20	90170-05803	3 - 9
1YC-F6290-C0	24 - 19	B28-F836K-00-WN	27 - 11	1YC-H2566-00	35 - 28	1YC-H360M-A0	31 - 21	54S-H591A-03	36 - 1	90170-12800	12 - 38
1YC-F6290-D0	24 - 19	B28-F836L-00-7M	27 - 12	1YC-H2590-10	35 - 17	20B-H3751-00	31 - 19	54S-H592A-01	36 - 9	90179-05802	16 - 2
1YC-F6301-10	24 - 20	B28-F836L-00-P1	27 - 12	1YC-H2599-20	35 - 19	5TL-H3912-00	34 - 11	1YC-H6111-10	35 - 14	90179-06835	24 - 30
1YC-F6351-10	24 - 23	4D0-F8372-00	33 - 12	1YC-H2911-00	34 - 10	5VV-H3922-00	34 - 17	1YC-H6261-01	35 - 7	90179-08518	1 - 14
54S-F637G-00	24 - 25	B28-F837D-00-7M	27 - 21	1YC-H3310-00	30 - 1	1YC-H3973-30	34 - 1	1YC-H6265-01	35 - 15	90179-10803	12 - 41
B28-F7111-00	26 - 1	B28-F837D-00-P0	27 - 21	1YC-H3311-00	30 - 2	1YC-H3976-30	34 - 6	1YC-HA6S0-00	35 - 9	90179-12004	28 - 7
54S-F7112-00	26 - 2	B28-F837D-00-WN	27 - 21		30 - 8	1YC-H3977-00	34 - 4	5P0-W0041-00	25 - 5	90179-25802	18 - 32
55G-F7114-00	24 - 26	1YC-F8385-00	27 - 19		30 - 14	1YC-H3980-00	34 - 20	4C9-W0048-00	22 - 8	90183-05807	15 - 6
5P0-F7114-00	14 - 5	B28-F8395-00-7M	27 - 20		30 - 19	5TL-H3980-02	34 - 14	54S-WE110-00	1 - 1		16 - 7
54S-F7121-00	9 - 6	B28-F8395-00-P0	27 - 20	1YC-H3312-10	30 - 3	1YC-H3985-00	34 - 7	1YC-WF34A-01	18 - 24		16 - 11
5VV-F7214-00	26 - 22	B28-F8395-00-WN	27 - 20	1YC-H3314-10	30 - 4	1YC-H3986-00	34 - 2	1YC-WH333-00	30 - 15		16 - 14
5MY-F7254-00	26 - 5	1YC-F839G-10	27 - 32	1YC-H331E-00	30 - 16	1YC-H3987-00	34 - 3	1YC-WH334-00	30 - 20		16 - 18
54S-F7267-00	26 - 6	1YC-F839G-20	27 - 32	1YC-H3320-00	30 - 7	1YC-H3988-00	34 - 8	90101-06046	23 - 17		20 - 8
B28-F7311-00	26 - 17	1YC-F839G-30	27 - 32	1YC-H3322-10	30 - 9	1YC-H4103-00	32 - 2	90101-08847	26 - 18		26 - 12

INDICE NUMERICO
NUMERICAL INDEX

CODIGO N° PART NO.	REF. N°	CODIGO N° PART NO.	REF. N°	CODIGO N° PART NO.	REF. N°	CODIGO N° PART NO.	REF. N°	CODIGO N° PART NO.	REF. N°	CODIGO N° PART NO.	REF. N°
90183-05807	27 - 3	90430-08119	9 - 5	91401-25015	26 - 39	94307-14801	23 - 5	95812-08045	8 - 9	99530-10114	9 - 35
	27 - 8		9 - 19	91701-08035	26 - 28	94414-14800	21 - 9	95822-06016	6 - 12		9 - 40
	27 - 13	90430-08818	9 - 5		26 - 38	94416-14800	23 - 6	95822-06020	10 - 24		10 - 12
	27 - 22		9 - 19	92012-05010	24 - 22	94568-A6090	4 - 8		20 - 23		
	27 - 27	90430-10804	36 - 8	92012-05016	24 - 21	94700-00372	1 - 15	95822-06090	10 - 23		
	32 - 17	90445-08834	16 - 15	92907-06200	8 - 5	95022-06010	1 - 3	97602-03110	31 - 12		
	33 - 13		16 - 19	93102-15805	11 - 13		10 - 8	97602-04310	31 - 3		
90185-10811	21 - 12	90464-12810	35 - 21	93102-17805	12 - 6		19 - 5	97602-06220	6 - 8		
90185-10815	24 - 4	90464-14808	36 - 5	93102-19816	9 - 26	95022-06012	35 - 20	9760M-05225	34 - 5		
	24 - 7	90464-24230	35 - 22	93102-25818	9 - 33	95022-06014	24 - 28		34 - 9		
90185-14814	23 - 18	90467-110A3	10 - 5	93102-26810	13 - 7	95022-06016	9 - 31	97702-40616	33 - 8		
90201-05812	20 - 10	90467-12807	7 - 36	93106-20808	21 - 3	95022-06020	4 - 16	97702-50012	16 - 25		
90201-06864	20 - 24	90467-13858	7 - 46	93210-07802	23 - 9		36 - 4		20 - 13		
90201-08823	24 - 8		7 - 47	93210-10805	4 - 3	95022-06025	9 - 36		27 - 15		
90201-10065	17 - 5	90467-15804	7 - 26	93210-148H8	9 - 21	95022-06035	9 - 37		27 - 23		
90201-10118	25 - 3		7 - 27	93210-16801	12 - 34		9 - 41		27 - 26		
90201-10831	21 - 13	90480-13013	7 - 41	93210-258F1	12 - 40		10 - 13		30 - 6		
90201-12028	17 - 4	90480-13867	26 - 11	93210-258G2	12 - 40	95022-06040	24 - 27		30 - 12		
90201-12688	28 - 6		33 - 14	93210-29800	5 - 7	95022-06045	10 - 14		32 - 16		
90201-14820	23 - 19	90480-16804	14 - 16	93210-29808	29 - 6	95022-06060	9 - 13		32 - 20		
90201-154E8	11 - 11	90501-12743	26 - 26	93210-30611	7 - 4	95022-06070	9 - 14	97702-50016	16 - 3		
	12 - 35		26 - 36	93210-94800	6 - 11		9 - 30		16 - 6		
90201-20276	23 - 20	90501-16003	24 - 29	93211-07804	9 - 27	95022-06080	10 - 15		16 - 10		
90202-09802	16 - 24	90501-16004	5 - 6	93211-37801	9 - 34	95022-08012	9 - 4		16 - 13		
90206-14800	23 - 16	90506-12001	23 - 11	93306-002YE	4 - 4	95027-06025	25 - 11		16 - 17		
90208-12808	12 - 37	90506-15001	23 - 12	93306-002YW	4 - 4	95302-10600	17 - 3		27 - 14		
90249-12008	24 - 31	90506-20829	26 - 21	93306-006Y7	12 - 42	95602-06100	34 - 13		30 - 17		
90269-06812	15 - 7	90506-35821	26 - 4	93306-054X9	13 - 6		34 - 19		30 - 22		
	26 - 10	90508-32768	11 - 9	93306-054YM	4 - 2	95602-08200	14 - 8	97702-50025	7 - 37		
	27 - 2	90520-02826	14 - 15	93306-253Y3	13 - 9		26 - 20	97702-60530	6 - 9		
	27 - 7	90520-03802	16 - 21	93306-253Y9	12 - 5	95602-10200	14 - 4	97707-40116	33 - 9		
	26 - 16	90520-03806	20 - 6	93306-300YF	21 - 4		14 - 12	97707-50012	26 - 15		
90269-06815	2 - 12		20 - 12	93306-301XT	13 - 2	95612-08618	1 - 5	98502-05010	20 - 21		
90338-06807	24 - 10	90520-03813	27 - 25		13 - 3	95702-06500	20 - 16	98502-05016	20 - 9		
90340-12808	9 - 16	90520-05810	6 - 5	93306-305YU	2 - 4	95702-08500	8 - 8	98502-05020	5 - 3		
90380-15812	11 - 10	90520-10811	10 - 19	93306-372Y5	2 - 5	95702-10500	23 - 8	98502-06010	20 - 18		
90387-064W3	7 - 40	90520-15806	10 - 26	93310-528YG	2 - 8	95707-06500	8 - 4	98502-06012	7 - 18		
90387-067V1	6 - 4	90560-10292	21 - 2	93420-32808	11 - 3	95802-06010	14 - 14	98502-06016	28 - 4		
90387-06814	16 - 23	91312-05010	19 - 11	93430-08810	26 - 3		18 - 35	98702-03008	34 - 15		
90387-068K1	7 - 39	91312-06010	12 - 3	93440-10085	1 - 2		18 - 37	98902-05008	35 - 4		
90387-07828	27 - 17	91312-06012	4 - 11	93450-14088	2 - 15	95802-06012	36 - 12	98902-06012	27 - 16		
90387-08820	26 - 19	91312-06014	35 - 16	93501-04843	26 - 27		36 - 15	98907-06016	16 - 22		
90387-08821	14 - 6	91312-06020	28 - 3		26 - 37	95802-08030	26 - 32	99009-15400	11 - 12		
90387-10837	21 - 10		29 - 5	94107-14813	21 - 6		26 - 42	99009-17400	12 - 4		
90388-10801	14 - 10		34 - 16	94108-14810	23 - 3	95812-06025	7 - 15	99480-05010	9 - 29		
90388-10805	9 - 8	91312-06025	11 - 15	94207-14807	21 - 7		7 - 44	99530-10114	1 - 17		
90401-10823	25 - 2	91312-08025	24 - 9	94208-14805	23 - 4	95812-06030	1 - 11		1 - 18		
90430-06817	1 - 4	91401-25015	26 - 29	94307-14801	21 - 8	95812-08016	9 - 18		9 - 12		